

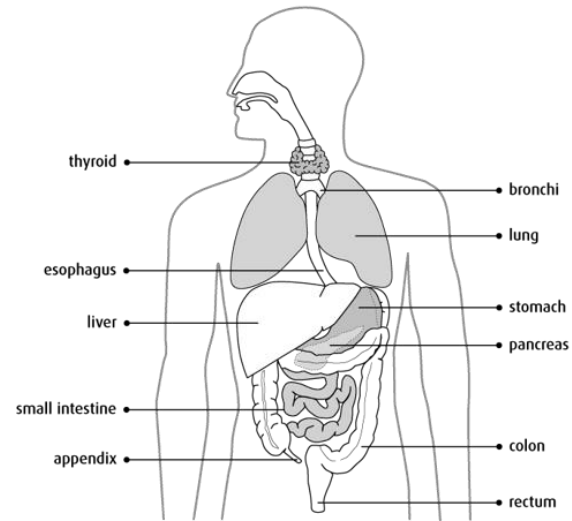
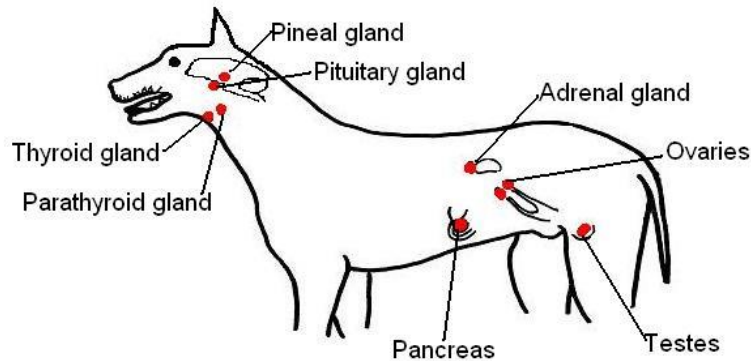
Measuring Cardiovascular Outcomes in Neuroendocrine Tumours (NET)

Peter Liu (pliu258@uwo.ca)

4th Year HSP One Health Undergraduate
Department of Pathology and Laboratory Medicine,
Western University, Ontario, Canada



NETs are heterogenous malignancies accounting for 2% of all human cancers. In both humans and dogs, NETs can secrete vasoactive hormones and many patients will present with significant clinical heart disease.



One Health Approach and Objectives:

- Investigate environmental and SES factors associated with NETs
- Investigate how NETs affect domestic animal species
- Identify stakeholders beyond human/veterinary scientific research
- Conduct research project to report standardized measures of cardiovascular health in human NETs
- How can NET and related cardiovascular outcomes benefit from One Health