

Table of Contents

A Message from the Dean	1
A Note from the Associate Director, Education	2
Education Office	3
Admissions & Student Affairs	4
Undergraduate Medical Education	6
Postgraduate Medical Education	13
Equity & Gender Issues and Faculty Health	17
Continuing Medical Education	18
Educational Research & Resources	21
Clinical Skills Learning Program	22
Community Outreach	24
e-Learning	26
Educational Evaluation	27
Faculty & Staff Development	28
GAMES	30
Southwestern Ontario Medical Education Network	31
Windsor Program	35

A Message from the Dean



The 2007-08 academic year was a particularly challenging and busy one for the Schulich Education Office – with the opening of the Windsor Program, responding to the accreditation review for Undergraduate Medical Education, restructuring to provide greater support to the centralized curriculum and expanding postgraduate training for both Canadian and International Medical Graduates.

In true form, the staff and faculty in the Education Office have gone above and beyond to manage all of these projects smoothly and efficiently, on top of their daily commitment to provide the best possible experience for our students and trainees.

With the changes noted above and the appointment of a Vice Dean, Education in July 2008, we will soon see further integration and enhanced support for Education programs across the School including Undergraduate and Postgraduate Medical Education, the Bachelor of Medical Sciences program, Dentistry and Graduate Studies. I look forward to working with all faculty and staff at the School to maintain this strong support network for our academic programs.

The annual Education report is a great resource and a clear reminder that education is at the heart of what we do at Schulich Medicine & Dentistry. I thank all of the staff and faculty members for their continued dedication to providing an outstanding education for our students and residents.



Carol P. Herbert
Dean, Schulich School of Medicine & Dentistry

A Note from the Associate Director, Education

The 2007- 08 academic year was one of positive change in Education. After a year of planning and preparation, we reaped the benefits of everyone's hard work as Schulich's Windsor Program prepared to welcome their inaugural class of 24 students in September 2008.

London and Windsor faculty and staff worked long hours throughout the year in preparation for the Windsor Program launch, ensuring all aspects of a detailed Education project plan were thoroughly addressed. Appointments of Windsor faculty and staff to key positions were made throughout the year in readiness for the September new academic year start.

In London, in addition to preparing for the joint delivery of the undergraduate medical education curriculum, the Undergraduate Medical Education program performed an internal staff restructuring that included the creation of new positions, reporting relationships and realignment of duties to focus greater attention on curriculum and student assessment.

Change was also the theme in Postgraduate Medical Education where similar staff restructuring included the creation of new and redesigned positions with the intent to focus talents and resources to areas where the need for greater support existed. As well, we said "goodbye" to Dr. Ken Harris as he fulfilled his appointment as Associate Dean of Postgraduate Medicine.

Everyone in Education thanks Ken for his leadership and many contributions to Postgraduate Medicine these past six years. We also welcome Dr. Sal Spadafora, who steps in as the new Postgraduate Medical Education Associate Dean.

In other areas, our Continuing Medical Education program was recognized for its innovative accomplishments in managing CME bias, while faculty and staff across Schulich continued to benefit from the superb support services provided by Educational Research & Resources.

All-in-all, a great year made possible by the great efforts of the dedicated faculty and staff of Education.

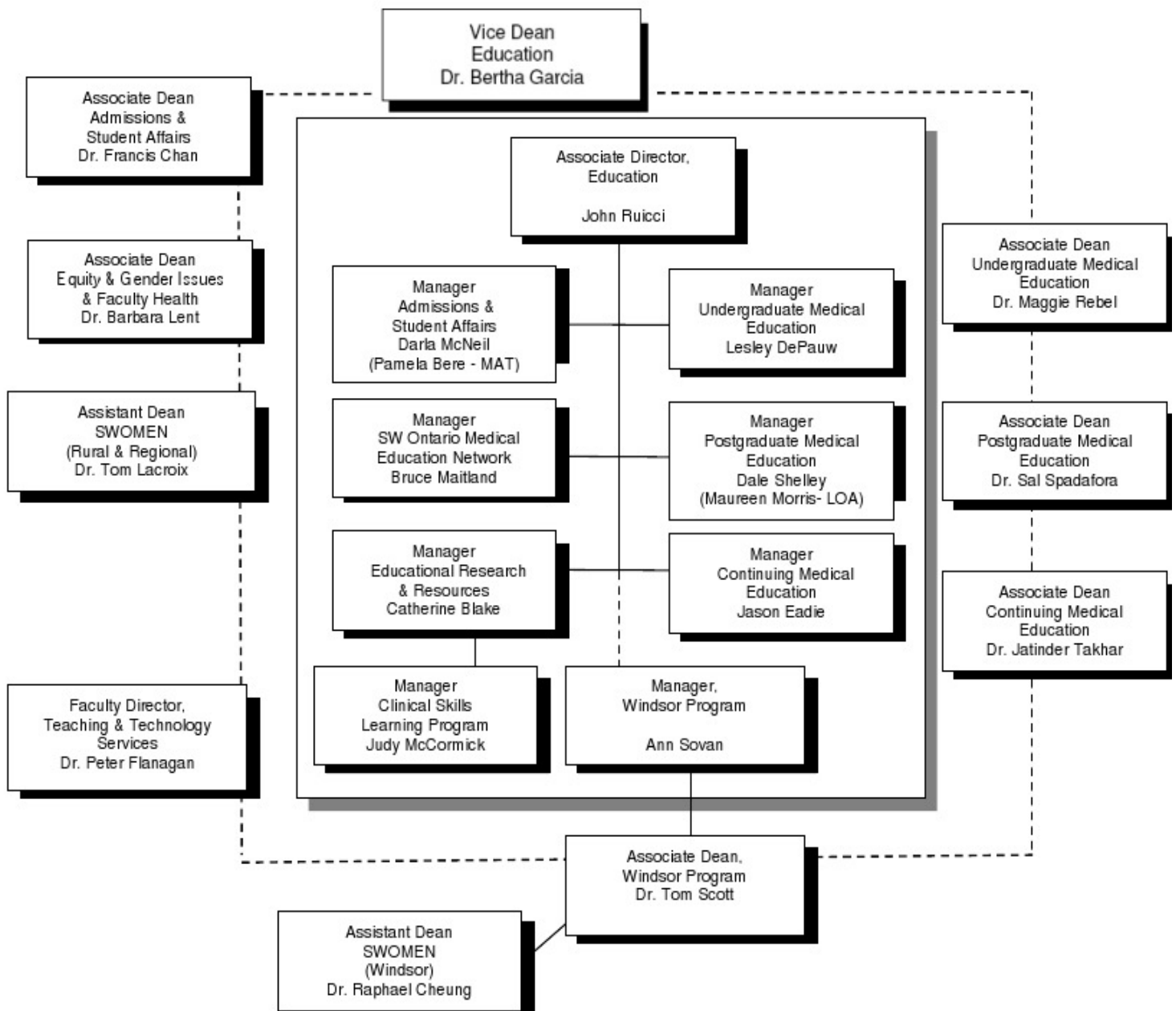
Regards,



John G. Ruicci
Associate Director, Education
Schulich School of Medicine & Dentistry
The University of Western Ontario



Education Office



Admissions & Student Affairs

Program Overview - Medicine

- Students may apply to multiple schools through the Ontario Medical School Application Service
- The total number of applicants that applied to Schulich Medicine in September 2007 was 2,300
- Of the 2,300 applicants, 445 were interviewed for 147 positions
- Programs offered include: Undergraduate MD, Combined MD/PhD, Concurrent MD/BESc and the Oral and Maxillofacial Surgery/MD/MSc Program
- The Undergraduate Medical Program is four years in duration

Program Overview – Dentistry

- Students apply to the individual dental program(s) which they wish to attend
- Entrance requirements vary according to program; entrance to the Schulich Dentistry undergraduate program is based on the combined competitiveness of academic grades, the Dental Aptitude Test (DAT) and interview scores; students must have completed specific science course prerequisites
- The total number of applicants that applied to Schulich Dentistry in September 2007 was 681, this included 674 national and 7 international applicants
- Of the 681 applicants, 269 were interviewed for 54 positions
- Programs offered include: Undergraduate DDS, Internationally Trained Dentists (ITD) Program and Master of Clinical Dentistry (MCID) Program
- The Undergraduate Dental Program is four years in duration

Past Year's Accomplishments

- Consolidated admission functions for both Medicine and Dentistry and expanded non-academic support services for medical and dental students, graduate students and post-graduate medical trainees
- Continued to interview and accept more applicants from Southwestern Ontario into the Medicine program (more than a two-fold increase over previous years)
- Held individual personal meetings with all new students (147 in Medicine and 56 in Dentistry) early in the academic year to familiarize students with the office's staff and services
- Coordinated the White Coat Ceremony, Career Night and Convocation for medical students
- Strengthened the Indigenous Student Support and Admission Program by promoting health careers and providing support to the Indigenous Student Affairs and Admission Committee
- Recruited an Indigenous Liaison Counsellor (shared with Indigenous Services)
- Expedited referrals for students and trainees to health care professionals with a wait-time of only 1-2 weeks
- Provided dedicated support to Dr. Rob Hammond, Faculty Advisor of the Medicine Student Support Team, in coordinating the mentorship program and the student health and wellness programs
- Represented Schulich at the four-day Toronto Education Fair and the Fall/Spring Western Preview days; provided academic counselling to thousands of potential applicants
- Effectively responded to concerns from individuals (faculty, residents, medical/dental students, staff) with respect to equity and gender issues
- Presented to residents, students, departmental rounds and faculty-wide faculty development on issues related to equity and gender issues, faculty health and professionalism



Dr. Bertha Garcia
Vice Dean, Education
2008/09

Effective July 1, 2008, Dr. Bertha Garcia was appointed Vice Dean, Education, for the Schulich School of Medicine & Dentistry. Her term is July 1, 2008 - June 30, 2011.

As Vice Dean, Education, Dr. Garcia will provide oversight of all educational activities within SSMD and will lead the planning of a revised Education structure that will be central to the support of Undergraduate and Postgraduate Medical Education, the BMSc Program, Dentistry and Graduate Studies at Schulich.

Dr. Garcia will also oversee the undergraduate medicine curricular change process to ensure a fully integrated four year curriculum; this will include integration across SWOMEN sites.

Admissions & Student Affairs

Key Program Statistics - Medicine

Class of 2011 Profile

- 147 entry positions
- 75 males and 72 females
- Average age: 23 years
- 33% of the class from Southwestern Ontario region

Key Program Statistics - Dentistry

Class of 2011 Profile

- 54 Entry positions
- 24 males and 30 females
- Average age: 23 years



Pamela Bere

Manager, Admissions & Student Affairs
Maternity Leave – return March 2, 2009

- Responsible for management of all activity associated with the Admissions & Student Affairs Program



Darla McNeil

Acting Manager, Admissions & Student Affairs

- Responsible for management of all activity associated with the Admissions & Student Affairs Program



Dr. Francis Chan

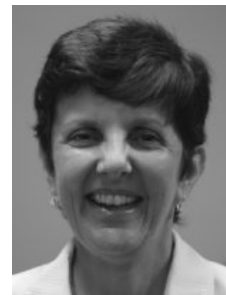
Associate Dean, Admissions & Student Affairs



MaryAnn Kennard

Administrative Assistant

- Involved in all stages of the admissions cycle



Trish Ashbury

Administrative Coordinator, Dental Admissions

- Corresponds with applicants concerning all aspects of the application process
- Secretary to the Dentistry Admissions Committee



Debbie Dolson

Indigenous Liaison Counsellor

- Supports all aspect of First Nations, Métis and Inuit applicants to Medicine & Dentistry
- Provides support and counselling to facilitate Indigenous student success
- Assist with curriculum implementation of culture and health concerns present in Indigenous communities



Gerry Niles

Administrative Assistant

- Front Line Person for Admissions & Student Affairs and Equity & Gender Issues and Faculty Health Office
- Assistant to the Manager, Admissions & Student Affairs Office

For further information, please contact the Admissions and Student Affairs office at 519-661-3744 or e-mail admissions@schulich.uwo.ca

Undergraduate Medical Education

Program Overview

- Four-year program leading to Doctor of Medicine (MD) degree
- Provides the opportunity to acquire knowledge, skills and attitudes required for graduate/postgraduate studies leading to clinical practice, research or other medical careers
- Education is a blend of lectures, laboratory exercises, small group learning and supervised clinical experience

Patient-Centred Curriculum

- The patient is the centre of our clinical learning
- Patient-centred care requires a relationship in which patients feel their concerns are acknowledged and the physician has understood their plight
- Patients and physicians must work together to find common ground regarding management - reaching a mutual understanding of the problem, treatment goals and roles
- Incorporates ecosystem health, the study of interrelations between human health and economic, social and ecological factors

Curriculum; Years 1 & 2

- Provide a solid grounding in the basic and clinical sciences through integrated courses of study
- Teaching methods include: small group tutorials, problem based learning, lectures and large group discussions, self-instructional materials and laboratories
- Early patient contact emphasizes the patient-centred approach
- A corresponding case is introduced at the beginning of each week or theme
- Opportunities for student involvement in the community
- First-year students participate in Rural and Regional Discovery Week to gain clinical experience and exposure to medicine in a smaller Southwestern Ontario community

Years 3 & 4

- Include a 52-week Clerkship, clinical electives and advanced basic medical science electives
- During the third-year Clerkship the student becomes an active member of clinical care teams in: family medicine, medicine, obstetrics and gynaecology, paediatrics, psychiatry and surgery
- Under supervision clerks are given graded responsibility in the diagnosis, investigation and management of patients in hospital, clinic and outpatient settings
- Third-year students must complete at least one four-week rotation outside of London or Windsor
- Year 4 clinical electives are arranged by students in any discipline, at Schulich or in other centres
- After year 4 clinical electives students participate in advanced courses in clinical and basic sciences

Undergraduate Medical Education

Clinical Training; Years 1 & 2

Clinical Methods – students spend three to four hours per week in small group clinical teaching; total 90 hours per student in Year 1; 167.5 hours for students in year 2

Rural and Regional Discovery Week – at the end of Year 1 students spend one full week in a rural or regional placement

Clerkship Year 3

Students spend 48 weeks in clinical teaching (approximately 40 hours/week). This includes Rural and Regional placements in the SWOMEN network

Year 4

Electives – students spend 16 weeks doing clinical placements in London or elsewhere in Canada. Option to study in a third world country through the Medical Electives Overseas program.

Transition Period – year four students spend twelve weeks in class, enrolling in 240 hours of study from a choice of 480 hours of short courses



Dr. Margaretha Rebel

Associate Dean, Undergraduate Medical Education

- Overall academic responsibilities for Undergraduate Medical Education



Lesley DePauw

Manager, Undergraduate Medical Education

- Manages and oversees all aspects of the four year Undergraduate Medical Program

Curriculum Schematic

	September	April										August
YR 1	Clinical Methods I											
	Community Health I											
	Intro to Medicine	Inf-Imm	Muskuloskeletal	As	Resp & Airways	Heart & Circulation	Blood & Onc	Inf-Imm	Skin	Cn	As	RR
YR 2	Clinical Methods II											
	Community Health II											
	Endocrine & Met	Digestive & Nutri	Genitourinary	As	Reproduction	Cn	Neuro, Eye & Ear	Psych & Behav	EC	Cn	As	
YR 3*	Intro	Family Medicine	Paediatrics	Obstetrics & Gyn	Psychiatry	Internal Medicine		Medicine Sel		Surgery		
YR 4	Electives				Trans 1	CaRMS	Transition 2		ACLS			

* Students take rotations in different orders

As Assessment
Cn Consolidation
RR Rural & Regional Week
EC Emergency Care



Diane Geurkink
Curriculum Materials Coordinator
• Electronic Course Materials (in OWL)



Becky Bannerman
Clinical Clerkship Coordinator
• Year 3 Clerkship
• Clerkship & Electives Committee

Undergraduate Medical Education

Past Year's Accomplishments

- In tandem with the changing curriculum and Windsor Program expansion, the office of Undergraduate Medical Education is undergoing significant restructuring and expansion. Seven new staff positions have been created within the office and existing positions have been redesigned to further support the centralized, systems-based curriculum mandated by the accreditation bodies for medical education. The expansion and restructuring will provide increased support to faculty and places a particular emphasis on curriculum design, curriculum materials and assessment. The development of Teaching Technology Services has been interwoven with these changes
- A record number of Year 1 students entered the MD program in September 2007: 147. 132 Year 4 students graduated in May 2008
- Windsor Year 1 Class will become a reality in September 2008. Planning has been an ongoing task and major focus throughout the year. We continue to work with the Windsor Program Office, Admissions, Computer Information Services, Registrarial Services, Faculty Development, Teaching Technology Services and the Evaluation Unit to ensure that our services and processes are accessible to the Windsor students and staff
- Renovations to M146 to enable video-conferencing of the large classes between London and Windsor are complete. Eleven small group teaching rooms in London have also had technology upgrades to enhance teaching
- Both Year 1 & 2 have now delivered their re-designed courses. Faculty are now working toward designing teaching that is appropriate for video-conferencing and other distance formats. Working closely with Teaching Technology Services to ensure faculty preparation for Windsor expansion
- The renewed Program Evaluation Committee is in place and has been working well. A process for the evaluation of clerkship rotations has been refined and redeveloped
- The process for UWO faculty evaluation went on-line with the release of forms through our scheduling software One45. Approximately 30,000 forms were sent out to students
- Twelve summer students have once again been hired to assist Year 1 & 2 Course Coordinators in redeveloping their courses. We continue to work closely with Teaching Technology Services to re-develop our on-line learning sites to enable more use of the advanced features in the program



Suzanne Belanger
Curriculum Map/PCCIA
Coordinator

- Curriculum Objectives Information & Map PCCIA (tutorial information and tutor recruitment)



Sarah Rwankole
Visiting Electives
Coordinator

- Visiting Student Elective Program

Undergraduate Medical Education



Sherri Moore

Yr 1 Curriculum Admin. Support

- Overall administration of Year 1 Courses
- Pre-Clerkship & Transition Period Committee



Sophie Palmieri

Clinical Methods / Community Health Coordinator

- Clinical Methods - Years 1 & 2
- Community Health Course - Years 1 & 2
- Curriculum Committee



Judy Hicken

Yr 2 Curriculum Admin. Support

- Overall administration of Year 2 Courses



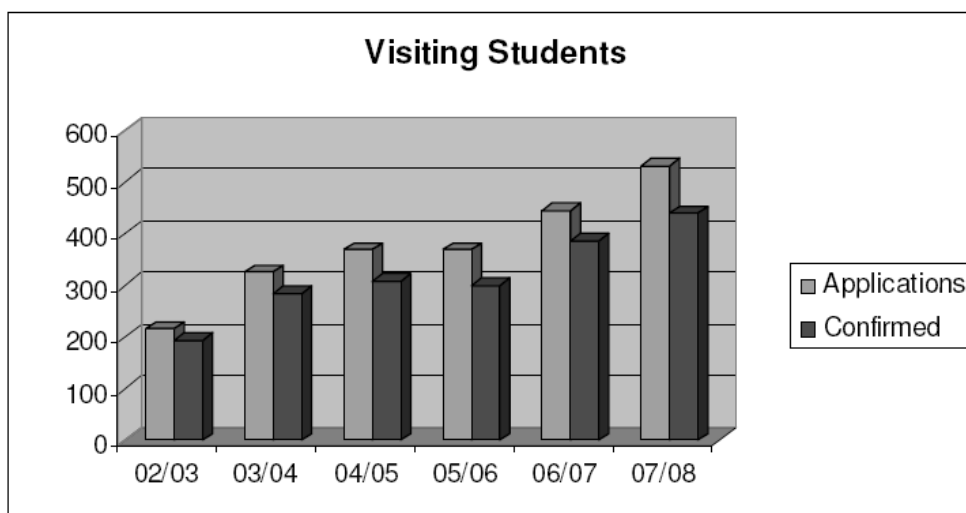
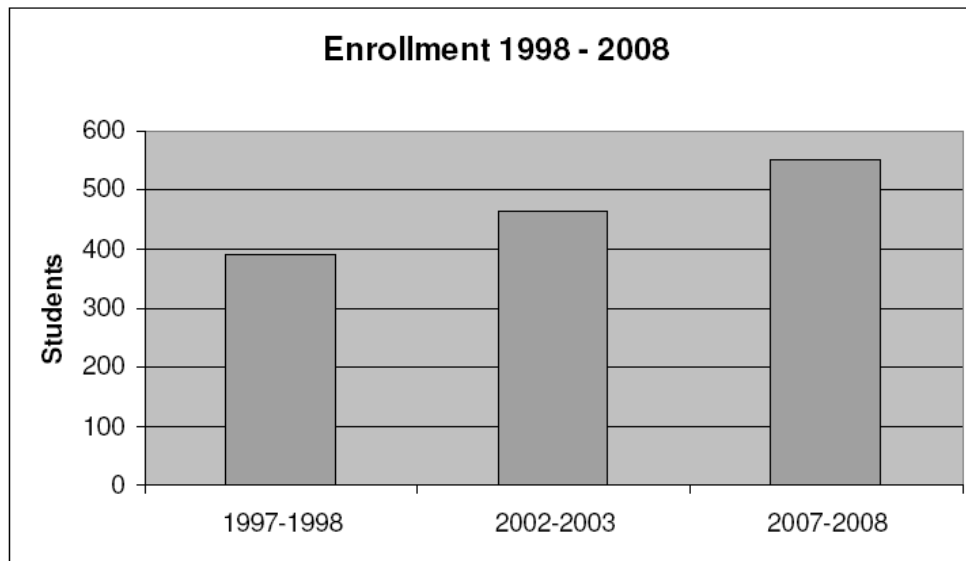
Susan Di Trollo

Registration Coordinator

- Schedules - Years 1 & 2
- Awards and Scholarships
- Summer non-credit elective
- Convocation

Undergraduate Medical Education

Key Program Statistics



Dawn MacDonald
Yr 4 (Electives/
Transitions) Coordinator

- Year 4 Electives Transition Period
- ACLS



Lily Noel
Administrative Coordinator

- Front line person for UME
- Credentialing Coordinator
- Letters of Good Standing
- Medical Student Performance Record
- Associate Dean Support

Undergraduate Medical Education

Enrollment MD Program 2007-08

2007-08	Women	Men	Total
Year 1	72	76	148
Year 2	64	74	138
Year 3	63	71	134
Year 4	72	60	132
Total	271	281	552



Lee-Anne McAvoy
Student Assessment
Coordinator

- Assessment of Students - Years 1 & 2
- Progression & Awards Committee



Mary Peterson
Rural—Regional
Coordinator

- Rural Medicine program

For further information, please contact the Undergraduate Medical Education office at 519-661-2076 or e-mail undergraduate@schulich.uwo.ca

Postgraduate Medical Education

Program Overview

- The purpose of Postgraduate Medical Education (PGE) is to ensure excellence in the educational experience of all trainees and to assist the faculty in delivering an excellent educational experience
- The Schulich School of Medicine & Dentistry at The University of Western Ontario offers 49 PGE training programs leading to certification by either the College of Family Physicians of Canada (CFPC) or the Royal College of Physicians and Surgeons of Canada (RCPSC)
- Postgraduate training programs range from two to seven years, with the opportunity for fellowships following residency
- There are two main teaching centres situated on five sites affiliated with our postgraduate training programs, including London Health Sciences Centre and St. Joseph's Health Care London
- In addition to the affiliated teaching hospitals, Western has access to an extensive number of rural and community training sites in both northern and southern Ontario; residents from many programs participate in the Southwestern Ontario Medical Education Network (SWOMEN)

Past Year's Accomplishments

- Management of PGE expansion to both Canadian medical graduates and International medical graduates; successfully assisted the Ontario Ministry of Health in meeting their trainee expansion targets
- Successful in filling all designated PGY1 positions
- Acceptance of first resident into new Oral Maxillofacial Surgery developed with Schulich Dentistry
- Continued increase in SWOMEN Windsor resident training months
- Development of the Paediatric Clinical Teaching Units
- Development of a core psychiatry site with renovations to ER and Psychiatry Departments
- Hosted site visits from PAIRO, Ministry of Health and Long Term Care
- Supported postgraduate faculty in attending one CanMEDS Train the Trainer Workshop: "Health Advocate" in April 2008
- Continue to invest in increased support for our residents and fellows
- Continue to focus on the PGE database, including reporting, on-line registration, and single-sign on to ensure that it meets our growing demands
- Collaborated with London hospital Medical Affairs to streamline joint projects (including orientation, registration and credentialing processes, Clinical Education Budget)
- Successful Job Fair in September 2007 for residents, medical students, allied health professionals and surrounding communities
- Developed, collaboratively with Medical Affairs, a Chief Resident Job Description and Workshop



Dr. Kenneth A. Harris
Associate Dean, PGE
July 1, 2002 – June 30, 2008

- Overall administrative responsibility for Postgraduate Medical Education, including residents and fellows



Dr. Salvatore Spadafora
Associate Dean, PGE
July 1, 2008 – June 30, 2011

- Overall administrative responsibility for Postgraduate Medical Education, including residents and fellows

Postgraduate Medical Education



Maureen Morris

Manager, PGE (On Leave)

- Supports trainee eligibility, training positions, PAIRO-CAHO Agreement, Accreditation
- Finances for PGE and Clinical Education Budget
- CaRMS, Transfers
- External liaison for CPSO, MOHTLC, RCPSC, CFPC, COFM, OPHRDC



Dale Shelley

Interim Manager

- Supports trainee eligibility, training positions, PAIRO-CAHO Agreement, Accreditation
- Finances for PGE and Clinical Education Budgets
- CaRMS, Transfers
- External liaison for CPSO, MOHTLC, CEHPEA, RCPSC, CFPC, COFM, OPHRDC

Past Year's Accomplishments

- Worked collaboratively with the Programs and IT to develop a mechanized PGY1 Rotation Schedule; final rollout expected for 2009 academic year
- Rollout of Phase 1 of the Restricted Registration Trial with 26 applications being submitted and 17 approved
- In response to the 2006 on-site survey by the Royal College of Physicians and Surgeons of Canada (RCPSC) and the College of Family Physicians of Canada (CFPC) and in following up on the "strengths and areas to improve" documented in the survey report, PGE and the Programs are continuing the process of Internal Reviews to ensure Schulich meets national accreditation standards
- We would like to offer our generous thanks to Dr. Ken Harris for his time, dedication and guidance to our residents, the programs and the PGE staff, and to wish him well as he completes his 2nd term as Associate Dean Postgraduate Education as of June 30, 2008
- We are pleased to welcome Dr. Sal Spadafora as he begins his term as Associate Dean, Postgraduate Education effective July 1, 2008

Key Program Statistics

	2000-01	2001-02	2002-03	2003-04	2004-05	2005-06	2006-07	2007-08
Residents	375	379	396	437	469	508	560	584
Fellows	74	69	82	82	99	103	98	102

PGE Trainee Enrollment

** Trainee numbers taken from national census performed annually on November 1 by the Canadian Post-M.D. Education Registry (CAPER)



Marnie Bensette

Visa Trainee Coordinator

- Assessment of International applications for residency and fellowships
- Liaison with sponsors and programs
- Liaison with immigration, licensing and accreditation bodies
- Orients visa trainees
- Business Officer

Postgraduate Medical Education

Recognition of Faculty, Staff and Students

2008 Schulich Educator Awards (Graduate/Postgraduate)

Schulich Distinguished Leader Award in Education

Dr. John Sangster – Family Medicine

Schulich Educator Awards

Drs. Frank Beier/Gerald Kidder, Physiology & Pharmacology

Dr. Ewa Cairns, Medicine/Microbiology & Immunology

Dr. Mariamma Joseph, Pathology

2008 CAME Certificate of Merit

Dr. Sal Spadafora - Anesthesia & Perioperative Medicine

2008 PAIRO Resident Teaching Award

Dr. Scott Hamilton, Otolaryngology

2008 PAIRO Excellence in Clinical Teaching Award

Dr. David J. Robinson, Psychiatry

2008 PAIRO Residency Program Excellence Award Paediatrics, University of Toronto

2008 PAIRO Resident Advocate Award

Kim Norton, Radiation Oncology

October 2007:

Dr. Jeff Cao (Leadership Prize)

Dr. Michael Tong

Dr. Michael Brandt

Dr. Gilbert Wu

Dr. Cyrus Hsia

Dr. Ken D. Luk

Dr. Scott Hamilton

Dr. Stephanie Power

Dr. Jasper Yuen

April 2008:

Dr. Luc Dubois (Leadership Prize)

Dr. Andreas Antoniou (Leadership Prize)

Dr. Robert Arntfield (Leadership Prize)

Dr. Deric Morrison

Dr. J Whitcomb Pollock

Dr. Emily McKeown

Dr. John Stein

Dr. Jamie Steckley

Dr. Lauren Lukas VanderSpek

Dr. Teneille Gofton

Dr. Michael Sey

2008 CSCI/CIHR Resident Research Prize

Dr. Anna Mathew, Internal Medicine

2007 CSCI/CIHR Resident Research Prize

Dr. Shiva Jayaraman, General Surgery



Tara Coletti

Administrative Assistant

- International appointments assistant
- Manages international applications
- Assists with registration and orientation



Susan Smyth

Registration Coordinator

- Registration and Orientation
- Letters of Appointment
- Licensure
- Leaves of Absence
- Resident Handbook
- Liaison with Western Registrar's Office
- Commissioner of Oaths

Recognition of Faculty, Staff and Students cont.

2008 P.S.I. FOUNDATION Resident Research Prizes

Dr. Anna Mathew, Internal Medicine
 Dr. Scott Hamilton, Otolaryngology
 Dr. Christopher Howlett, Anatomical Pathology
 Dr. Kyle Cowan, General Surgery
 Dr. Scott Wotherspoon, Orthopaedic Surgery

2007 P.S.I Foundation Resident Research Prizes

Dr. Shiva Jayaraman, General Surgery
 Dr. Carmela Tartaglia, Neurology
 Dr. Jamie Steckley, Neurology
 Dr. Sahar Ghorayeb, Family Medicine
 Dr. Doron Rabin, Neurosurgery

2006-2007 Class of '49 Award for Excellence in Teaching by Residents

Senior – Dr. Kevan Saidi - Orthopaedic Surgery
 Junior – Dr. Andre Nimigan – Plastic Surgery



Louise Turnbull

Administrative Assistant

- International appointments assistant
- Manages international applications
- Assists with registration and orientation



Renata Mak

Program Coordinator

- Internal Reviews
- RCPSC & CFPC Survey
- PGE Committee support
- PGE Policy and Procedure Manual
- AWC Programs (Accreditation Without Certification)
- CaRMS Support
- PGE Webmaster



Julie Stuijbergen

PGE Administrative Assistant

- Academic Half Days, Job Fair
- RCPSC/CFPC Forms (ie. FITER, CCT)
- Evaluations
- Awards
- Certificates of Attendance
- Credentialling
- Support to PGE Associate Dean

For further information, please contact the Postgraduate Medical Education office at 519-661-2019 or e-mail postgraduate.medicine@schulich.uwo.ca

Equity & Gender Issues and Faculty Health

The Schulich School of Medicine & Dentistry is committed to preparing leaders who will shape the future of healthcare. Part of that leadership training includes a dedication to professionalism both inside and outside the educational setting and a commitment to an environment of respect and collegiality. The day-to-day actions of faculty, students and staff are guided by the School's Four Pillars of Professionalism - Altruism, Integrity, Responsibility and Respect.

The role of Associate Dean, Equity and Gender Issues is to

- Promote greater awareness and understanding of gender and equity issues within educational activities, research and the work environment of the Schulich School of Medicine & Dentistry
- Address gender or equity issues and respond to problems experienced in the teaching, learning or working environment by any student, trainee, faculty or staff member

The current Associate Dean of Equity and Gender Issues is Dr. Barbara Lent. Dr. Lent also currently fulfills the role of Associate Dean for Faculty Health.

Past Year's Accomplishments

- Effectively responded to wide range of concerns from individuals and groups (faculty, residents, medical/dental students, staff) with respect to equity, gender and professionalism issues
- Presented to medical students and at city-wide and departmental educational sessions for residents, at departmental rounds and at local and SWOMEN faculty development workshops on issues related to equity and gender issues, faculty health and professionalism
- Developed electronic and print materials to highlight Schulich's commitment to professionalism amongst faculty, staff, students and clinical trainees
- Developed Equity and Professionalism section on Schulich's website; included details of relevant codes/guidelines, resources, etc. (<http://www.schulich.uwo.ca/equity>)
- Developed list of SSMD and hospital-based resources to address professionalism issues for London and Windsor
- Liaised with medical education counterparts at provincial and national levels and with non-SSMD UWO colleagues
- Represented SSMD at CPSO Task Force on Professionalism
- Co-ordinated 6th iteration of transition block selective on Gender and Health for 4th year students
- Mentored 2nd year students in bioethics projects related to gender
- Participated in development of updated Schulich policy on Relationships with Non-University Partners



Dr. Barbara Lent
Associate Dean, Equity & Gender
Issues and Faculty Health

For further information, please contact the Equity & Gender Issues and Faculty Health office at 519-661-3744 or visit www.schulich.uwo.ca/equity

Program Overview

- The Continuing Medical Education (CME) office strives to provide effective and evidence-based CME programs that meet the needs of our medical providers via an effective decentralized model of CME delivery. Current staffing includes one office manager, two administrative assistants (one FT and one PT) and one full-time program coordinator. The Associate Dean is on-site 2 full days per week
- Western's target for CME programming, which is comprised of 15 counties extending from Windsor, east to Kitchener-Waterloo, north to Georgian Bay and south to Lake Erie, includes over 4,000 practising family physicians and specialists in the Southwestern region of Ontario
- The CME office operates on a cost-recovery model and external funding is generated from a variety of sources
- The CME office is actively involved in the development of online, accredited programs; the development of Self Assessment Programs and Personal Learning Projects and in various research initiatives in the areas of unperceived needs assessments and pharmaceutical bias measurement in education
- Current objectives include the development of an online portal to enhance options for self-directed learning for its target physician population, which will also have a survey capability to conduct needs assessments, as well as to post video and audio archives of medical-school-associated, hospital-based rounds

Past Year's Accomplishments

- Presented "CME Bias Management Process" at SACME's Spring meeting at Copper Mountain, Colorado – March 29 - April 1, 2007 and at the Alliance for CME meeting in Orlando, Florida – January, 2008
- Expanded the research project "Managing Bias in CME" to include other centres such as U. Calgary, U. Toronto, U. Saskatchewan and the Association des Médecins de langue Française
- Received a research award for the Best CPD Research 2008 from the Conseil québécois de développement professionnel continu (CQDPCM).
- Developed Section 3 accredited Self Assessment Programs in Tardive Dyskinesia, Adult ADHD and Carcinoid Tumors
- Developed and/or approved Personal Learning Programs in Prostate Cancer, Childhood/Adolescent ADHD and Multiple Sclerosis
- Published an original research article "Developing an Instrument to Measure Bias in CME" in the Journal of Continuing Education in the Health Professions – Spring 2007. This tool provides a novel approach to illuminate bias in live continuing education programs
- Completed unperceived needs-assessment research in Ontario in the area of psychiatry and received approval to expand research to include broader target segments and therapeutic areas on a national basis
- Presented the poster "Using focus groups for Strategic Planning in a CME Unit" at CACHE, Québec - October, 2007 which was published in JHCEP in Spring 2008

Recognition of Faculty, Staff and Students

Faculty Award for Outstanding Contributions in Continuing Medical Education

2007 Award – Mr. Joel Lamoure – Pharmacist, London Health Sciences Centre

2006 Award – Dr. Andrew Krahn – Department of Medicine

Continuing Medical Education

Key Program Statistics

FTE Staff:	3
Number of Courses approved for Mainpro M1 Credits (CFPC):	128*
Number of Courses approved for Maincert Section 1 Credits (RCPSC):	161*
Number of Online Courses offered in 2007-8**	14**
Number of Self-Assessment Programs developed and implemented:	1
Number of Programs offered where full conference management services were provided by the CME office:	14
Number of Participants Educated:	6,205***
Number of Participant-hours of Education delivered:	33,546***
Number of Physicians in Southwestern Ontario catchment area:	4,041

* 111 courses were accredited for both Mainpro M1 (College of Family Physicians of Canada) and Maincert Section 1 (Royal College of Physicians and Surgeons of Canada)

** Offered 10 accredited, online programs (developed and approved in 2006), supplemented with 4 new programs developed and approved in 2007

*** 28% of the courses had not sent in their participant data at the time this data was assembled (May 13, 2008)



Jason Eadie Manager

- Maintenance of full accreditation status
- Management of all administrative, strategic and fiscal operations of the unit
- Approval of accredited courses, workshops and seminars
- Planning and implementation of CME programs in collaboration with external health care organizations, associations and the private sector

Kathy Dantzer

Administrative Assistant

- Provides administrative support to office staff, faculty and committees
- Handles inquiries from internal and external customer groups
- Maintains website and registration module
- Logs and reviews all incoming CME applications for completeness, tracks sign-off process and notifies clients and Colleges of accreditation status
- Maintains administrative processes and systems

Linda Bruce

Program Coordinator

- Administers all aspects of the CME's conference management service
- Program brochure development, direct mail marketing, database maintenance, participant registration and credit card verification
- Manages catering and facility reservation, site set up and staffing, program evaluation, planning committee communications and management

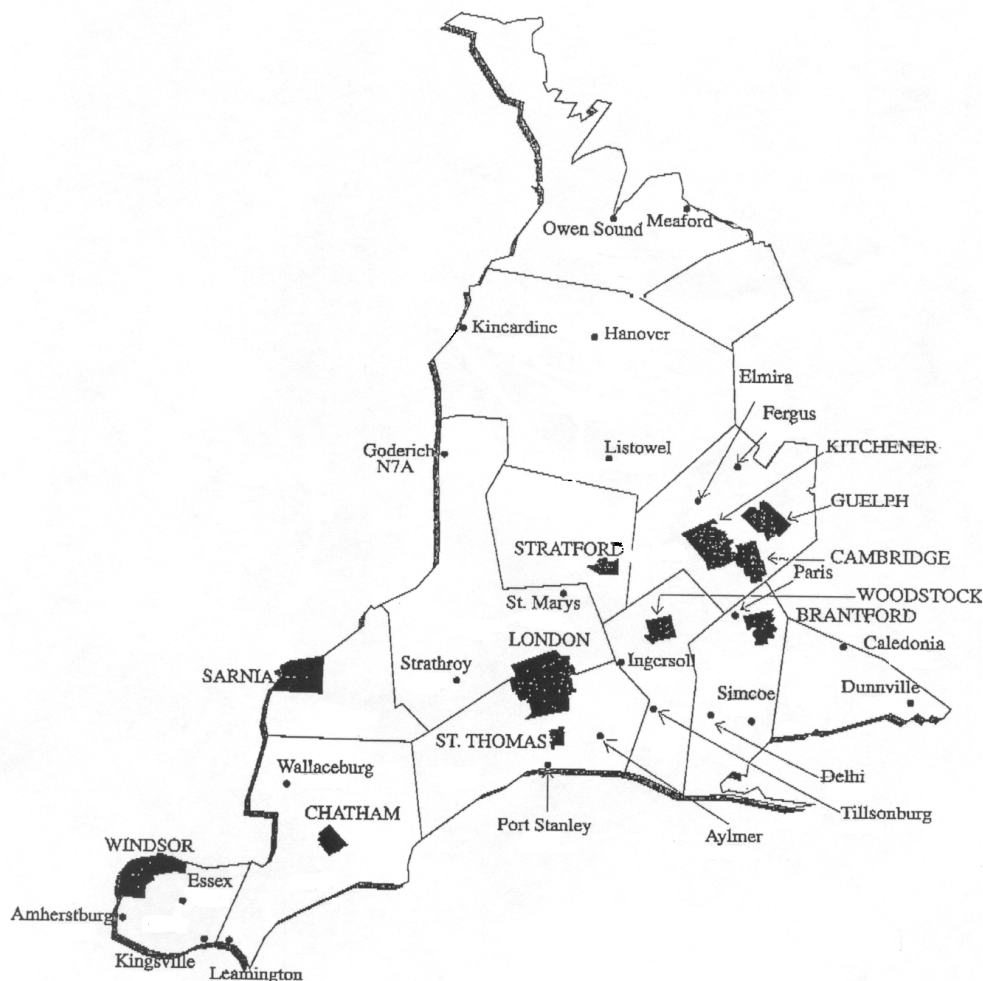
Lisa Lyons

Administrative Assistant

- Manages participant database and central filing systems
- Manages accreditation database and monthly reporting to the Colleges
- Assists with conference registration payments and processing

Continuing Medical Education

CME's Serviceable Area



Dr. Jatinder Takhar

Associate Dean, CME

- Ensures the maintenance of full accreditation status of the CME program
- Oversees the management of all administrative, strategic and fiscal operations and activities of the unit
- Contributes to the knowledge, development and the understanding of CME/CPD through the development or participation in a program of research and development consistent with the unit's mission and objectives

For further information, please contact the Continuing Medical Education office at 519-850-2904 or e-mail cme@schulich.uwo.ca

Program Overview

The Educational Research and Resources Unit (ERRU) is comprised of six groups, all of which offer School-wide support for education.

- Clinical Skills Learning Program – offers the tools for hands-on learning and evaluation of undergraduate and postgraduate medical students (including simulated patients); also supports educational programs in the Faculty of Health Sciences
- Community Development - outreach initiatives to the local community through free or low cost programs that allow the public to explore topics in medical science and research
- Educational Evaluation - collaborates across all units to measure, evaluate, and generate program and curriculum evaluations
- e-Learning Unit provides instructional design expertise and support for the development and maintenance of distributed learning courses
- Faculty & Staff Development - delivers workshops for faculty, residents, fellows, graduate students and staff; supports teaching awards, the Mini Fellowship program and other internal grants, provides on-site support in the Valberg Educational Resource Centre
- GAMES (Group for the Advocacy & Advancement of Medical/Dental Education) – a group to encourage scholarship in education



Dr. Kenneth A. Harris

Director, ERRU

- Program planning, instructor recruitment

Educational Research and Resources

Clinical Skills Learning Program

Program Overview

- Provides students, residents, faculty members and other health care learners with a unique experiential learning resource
- Simulated Patients (SPs) are people who have been carefully coached and trained to simulate an actual patient, including the history and physical findings, socio-economic and educational background, emotions and personality characteristics
- Volunteer Patients (VPs) are real patients with stable physical findings who are willing to tell their real stories and be physically examined
- Both SPs and VPs offer a readily available and standardized tool for teaching students, residents and other health care professionals new communication, interviewing and physical exam skills allowing for refinement of such skills and the evaluation of learner performance

Past Year's Accomplishments

- Introduction of several new blocks of physical examination teaching and two new Objective Structured Clinical Examinations (OSCE)
- Successful implementation of a male genital-rectal teaching component for Year 2 Medical students
- Successful implementation of new Communication Skills Teaching workshops for Year 3 and 4 Dentistry students
- Volunteer Patient roster nearly tripled in size from previous year in support of UME teaching

Key Program Statistics

- 380 active Simulated Patients (waiting list of 100)
- 55 active Volunteer Patients
- More than 6,000 contact hours (including teaching and evaluation) with Undergraduate medical students
- Supporting
 - 1,500 faculty members
 - 540 Undergraduate medical students
 - 600+ Postgraduate residents and fellows
 - 250 dental students
 - numerous other healthcare providers including Pharmacy, Social Work, Physiotherapy, Nursing
 - external organizations including Medical Council of Canada, Pharmacy Examining Board of Canada, College of Physicians and Surgeons of Ontario, Society of Obstetricians and Gynaecologists of Canada

Educational Research and Resources

Clinical Skills Learning Program



Judy McCormick

Manager

- Responsible for the overall management and administration of the Clinical Skills Learning Program (CSLP)
- Creates and oversees the planning and administration of all activities, educational programs and evaluations
- Plans and implements all OSCEs

Jane Graham

Administrative Assistant

- Administrative and reception duties

Rebecca Young

Coordinator

- Plans and implements all Clinical Methods teaching



Susan North
SP Trainer



Stephanie Foreman-Brown
Senior SP Trainer

No Photo Available

Justin Quesnelle
Assistant Administrator
& SP Trainer

- Supports the administration and SP training needs of the program

For further information please contact the Clinical Skills Learning Program office at 519-661-3748 or e-mail clinical.skills@schulich.uwo.ca

Program Overview

Since 2003, the Schulich School of Medicine & Dentistry has offered a variety of free or low cost programs designed for the general public. The goals of these programs are to:

- open the doors of the medical and dental schools to the community
- help the public learn more about the study of medicine and dentistry
- explore the scientific basis of health and disease
- understand how research discoveries translate into innovations and treatments

Past Year's Accomplishments

Mini Medical School, October/November 2007

- a lecture series where faculty teach key concepts, using basic science and clinical topics, to get at some of the underlying principles of medicine

Café Scientifique, January 2008

- a discussion group that gives members of the public an opportunity to examine current topics in science with an expert in the field
- co-sponsored by the London Public Library

Opera Holds Up a Mirror, February 2008

- a one-evening public forum, co-sponsored with the Don Wright Faculty of Music to discuss Kurt Weill's *Street Scene* and woman abuse

Medicine & Classics, March 2008

- a lecture and discussion series co-sponsored with the Department of Classical Studies
- the public discusses selected aspects of ancient Greek culture with both a Classics professor and a professor from Medicine

Physicians in Fiction, May 2008

- a book club and discussion group examining medical-themed novels with both an English professor and physician
- co-sponsored with the Department of English and the London Public Library

Educational Research & Resources

Community Outreach



Key Program Statistics

- Offered five community programs in 2007/08 (Mini Med, Café Scientifique, Opera Holds Up a Mirror, Medicine & Classics, Physicians in Fiction)
- Total enrolment was 844

Recognition of Faculty and Staff

- “Physicians in Fiction” won the bronze medal from the Canadian Council for Advancement in Education
- Community Outreach received a Community Grant from Pfizer for Mini Medical School



Dr. Jim Silcox
Faculty Outreach Advisor

- Program planning and instructor recruitment



Catherine Blake
Manager

- Program planning, implementation and evaluation



Kay Hickey
Administrative Coordinator

- Registration, promotion and marketing
- Instructional support

For further information, please contact the Faculty, Staff & Community Development Office at 519-661-2074 or e-mail community.programs@schulich.uwo.ca

Program Overview

The e-Learning unit's mandate is to:

- explain and facilitate opportunities for technology to support good instructional practice
- guide good design in the use of educational technology in teaching
- provide leadership and direction in the effective use of technologies
- develop alternative teaching and learning methodologies
- encourage consultation with instructors and students
- enable training and support to faculty, staff and students in instructional technology

Past Year's Accomplishments

- WebCT OWL (Online Western Learning) was used by all medical students and instructors (years 1 – 4) for a full consolidated section
- “Schulich PGE: Paediatric Residents” WebCT OWL site was completed in collaboration with Jennifer Turnbull, a Paediatric resident
- Schulich continued to lead the implementation of WIMBA Collaborative Tools; first year of the pilot was completed with workshops provided and several online meetings occurring, including synchronous sessions between Schulich and colleagues at the University of Rwanda as part of the 'Rebuilding Health in Rwanda' project
- Redesign of the ERRU and e-Learning webpages
- Two new staff joined the unit in newly created positions - Deb Tieszer is Instructional Trainer (involved in training faculty to teach using videoconferencing) and Jay Loftus is Instructional Designer (developing online learning modules to assist teachers with face-to-face teaching)
- In Spring 2008 the e-Learning unit merged with the Educational Technology group to form “Teaching Technology Services,” a new portfolio for the support of all teaching at Schulich

Key Program Statistics

- Presented four faculty development workshops in the 2007-08 academic year
- Oriented and trained 132 faculty (teachers) in videoconferencing techniques across the first three UME courses
- Provided e-Learning support for teaching at Schulich (16 UME courses in the pre-clerkship curriculum)
- Ensured that all training materials for the 3rd year clerkship were available online



Dr. Peter Flanagan
Director

- Strategic planning, faculty liaison



Deb Tieszer
Instructional Trainer

- Videoconferencing Training Support



Jay Loftus
Instructional Designer

- Online teaching material design



Deanna Grogan
WebCT Support

- WebCT Instructional Support
- WebCT design and implementation



Weikai Huang
Web Designer

- Clerkship teaching materials

For further information, please contact the e-Learning unit at 519-661-2111 ext. 81415 or e-mail ellearning@schulich.uwo.ca

Educational Research & Resources

Educational Evaluation



Program Overview

The goals of Educational Evaluation are to:

- Develop and facilitate an ongoing program evaluation of Schulich's educational offerings
- Assess and evaluate instructional methods
- Review the equivalency between distributed and on-campus learning experiences

The Educational Evaluation team:

- Designs and develops ongoing evaluative initiatives
- Assesses and evaluates teaching and testing in the medical and dental programs
- Evaluates curricula
- Oversees outcomes research projects
- Assesses the implementation and outcomes of programs
- Communicates information regarding evaluation projects to faculty and external constituencies interested in medical education
- Acts as an information resource for all graduate students seeking research projects relating to the evaluation of Schulich's education offerings

Past Year's Accomplishments

- Completion of program evaluation of UME 2006/07 and 2007/08 Year 1&2 courses and Transition Period
- Completion of a report which analyses end-of-course surveys across the new curriculum to track improvements in all Undergraduate Medical courses at the Year 1 & 2 levels
- Development of a comprehensive plan to provide centralized, consistent evaluation to all Clerkship rotations starting in the 2008/09 academic year
- Completion of the SWOMEN database to track participation in all SWOMEN related initiatives
- Completion of a three-year report on the AAMC Graduation Surveys; analysis of the Schulich Survey/Canada survey for the 2008 graduation year
- Various other evaluation projects related to the education enterprise at the Schulich School

Key Program Statistics

Surveys:

- Approx. 35,000 individual send outs in 2007/08 (Year 1, Year 2, Transition Period Program Evaluations, end-of-course surveys, UWO Instructor Surveys, BCOE Surveys)
- Year 3 (Clerkship) Program Evaluation - Program Equivalency survey distributed to entire class
- SRPC Conference - distributed to all SWOMEN-sponsored Schulich participants in this conference over the last five years



Matt Wannan
Educational Evaluation Specialist



Jacqueline Wickett
Education Evaluation Assistant

For further information, please contact the Evaluation unit at 519-661-2111 ext. 86215, e-mail matt.wannan@schulich.uwo.ca or 519-661-2111 ext. 86939, email jacqueline.wickett@schulich.uwo.ca

Program Overview

The Faculty & Staff Development Office was established in 1999 with a mandate to:

- Organize workshops and programs to enhance skills in teaching, research and administration
- Work with individual teachers to assist with course planning, design and evaluation
- Provide courses that are cost-free for target group members (faculty, residents, fellows, staff and graduate students from the Schulich School of Medicine & Dentistry)
- Operate the Valberg Educational Resource Centre, a 24-hour swipe-access facility for faculty members and medical, dental and nursing students; the Centre includes a computer-equipped classroom, Information Desk, books, group study tables, videos, DVDs, computers, laptop ports, Western wireless connectivity, laser printers and a scanner

Past Year's Accomplishments

- Brought levels V and I of the Physician Management Institute from the Canadian Medical Association to Schulich; both modules filled to capacity
- In cooperation with the Assistant Dean, Graduate Studies, offered workshops to mentor graduate students and to develop effective graduate scholarship applications for NSERC, CIHR, HSF and OGS funding
- Continued program co-sponsorship efforts with the Schulich Research Office and offered nine research-building workshops
- In support of SWOMEN faculty, offered a teaching retreat in Stratford and several workshops in Chatham and Windsor
- Delivered customized workshops for the CPSO



Catherine Blake

Manager

- Program development, implementation, evaluation and management
- Needs assessment, instructor recruitment and support of educational grants

Educational Research & Resources

Faculty & Staff Development

Key Program Statistics

- Offered a total of 75 workshops in the 2007-2008 academic year
- Enrolment for the 2007-2008 academic year totalled 1,361
- Awards and Grants
 - 15 Mini Fellowships with a total value of \$26,110
 - eight Instructional Innovation and Development Fund awards for a total of \$60,026
 - three Faculty Support for Research in Education grants for a total of \$24,041

Recognition of Faculty

- Jim Silcox received the 3M Teaching Fellowship Award
- Five Schulich Awards for Undergraduate Education were given out in 2007-08 and five in the Graduate/Postgraduate category
- Two faculty received CAME Certificates of Merit



Kay Hickey

Administrative Coordinator

- Registration, promotion and marketing
- On-site course management and instructional support
- Administrative support for educational grants



Erin Szielasko-Frenette

Valberg Educational Resource Centre

- Resource library services and Information Desk
- Circulation/reference and cataloguing

For further information, please contact the Faculty, Staff & Community Development Office at 519-661-2074, e-mail facdev@schulich.uwo.ca or contact the Valberg Educational Resource Centre at 519-661-3445, e-mail ercstaff@schulich.uwo.ca

Educational Research & Resources Group for the Advocacy & Advancement of Medical/Dental Education Scholarship

Program Overview

- Founded in 2004, the mission of GAMES is to support education scholarship by Schulich's medicine and dentistry faculty
- Current membership is over 150 Basic Science educators, medical and dental faculty and residents along with several faculty members from other UWO faculties
- Members have access to free consultative services, scholarly activities and receive regular notice of upcoming conferences and funding opportunities

Past Year's Accomplishments

Publications

- J Legassie, EM Zibrowski, MA Goldszmidt (2008). Prevalence and relationship of impostorism and burnout syndrome in an internal medicine residency. *Journal of General Internal Medicine* 23(7) 1090-4
- SL Devantier, JP Minda, MA Goldszmidt, W Haddara (2008). The effects of goal-orientated categories: Are experts always the best? *Proceedings of the Sixth Annual Conference on Thinking*
- EM Zibrowski, WW Weston, MA Goldszmidt (2008). "I don't have time: Issues with fragmentation, prioritization, and motivation for education scholarship among medical faculty, in press, *Medical Education*
- C Watling, C Kenyon, EM Zibrowski, V Schulz, MA Goldszmidt, I Singh, H Maddocks, and L Lingard (2008). Rules of engagement: Residents' perceptions of the in-training evaluation process, in press, *Academic Medicine*

GAMES Education Symposium

- Hosted 'GAMES Education Symposium' - Dr. Geoff Norman keynote lecture

Education Rounds

- Co-hosted one additional Education Round - Dr. Christina St-Onge (MCC) re: Challenges of Assessment in the Medical School

Other Research Projects & Consultations

- Exploring the reliability of alternative instruments for evaluating Schulich clinical faculty
- Supervision of an education research project (by an internal medicine resident) on medical errors
- Involved in 24 consultations with faculty, Schulich graduate student and research staff

Recognition of Faculty, Staff and Students

- Acknowledging the contribution of Dr. Walter Wayne Weston as a Founding Co-Director of GAMES; Dr. Weston retired on June 30, 2008 from the University of Western Ontario after 32 years of service
- Mark Goldszmidt received the 2008 AFMC GlaxoSmithKline Young Educator Award and the Best Oral Presentation at the 2008 Canadian Conference on Medical Education; nominated for a Schulich 2008 Dean's Award of Excellence
- Elaine Zibrowski was nominated for a 2008 Western Staff Award of Excellence
- Expert-mentored research group awarded three research grants



Dr. Mark Goldszmidt
Director

- Assistant Professor,
Department of Medicine
Division of General
Internal Medicine



Elaine Zibrowski
Program Coordinator

- Primary administrator,
statistical and research
support

For further information, please contact the GAMES group at 519-661-2111 ext. 22143 or e-mail games@schulich.uwo.ca

Southwestern Ontario Medical Education Network



Program Overview

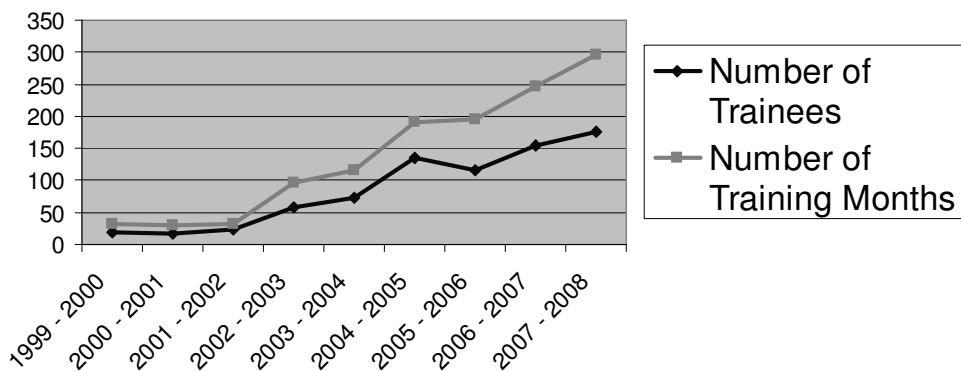
- The Southwestern Ontario Medical Education Network (SWOMEN) is a partnership of over 40 communities throughout Southwestern Ontario, including Windsor, that provide Rural Regional medical education and training experience to undergraduate and postgraduate trainees from the Schulich School of Medicine & Dentistry
- Over 380 University of Western Ontario Faculty Appointed preceptor physicians, located in communities throughout Windsor and Southwestern Ontario currently provide both core and elective training that meet the educational goals and objectives set out by governing bodies such as the Liaison Committee on Medical Education, Committee on Accreditation of Canadian Medical Schools, The Royal College of Physicians and Surgeons of Canada and the Canadian College of Family Physicians
- Funded by the Ministry of Health and Long-Term Care, province of Ontario, SWOMEN's mandate is to provide medical education outside the traditional academic health sciences centre located in London, Ontario
- Southwestern Ontario, like many areas of Canada, is medically under-served by physicians; a strategic benefit of SWOMEN's high quality community rotations is that it affords trainees the opportunity to see community practice outside the urban academic setting and to consider the benefits of a community rural or regional practice
- SWOMEN can share many instances where graduates from the Schulich School of Medicine & Dentistry have returned to communities in which they trained to set up permanent practice

Past Year's Accomplishments

- A Strategic Planning Meeting was held in London in June 2008 with community partners, hospital administrators, Schulich's medical leadership team and students to discuss the challenges and solutions in providing community-based medical education
- SWOMEN's Faculty Development Retreat was held in Stratford in the Fall of 2007; it was a joint Teaching Retreat with over 100 preceptors participating; SWOMEN has had the highest attended faculty development sessions in North America
- SWOMEN celebrated its tenth anniversary in the provisioning of rural/regional medical training and research; a ten year report is in development to showcase the success of the program and provide measured outcomes for further program development
- With the SWOMEN Windsor clerkship program growing in popularity, September 2008 marks the first year that twenty-four full-time clerks will complete their year in Windsor
- Now in its fourth year, MedQUEST has become an established component of many communities' long term health-human resource planning; developed by SWOMEN, the MedQUEST camp concept has encouraged over 400 grade ten and eleven high school students from Southwestern Ontario to participate in week-long summer camps where local physicians, nurses and medical students deliver an exciting curriculum providing high school students with realistic experiences in the field of medicine
- In conjunction with MedQUEST, seventeen trial disaster scenarios have been simulated in partnering communities, collaborating with municipal fire, EMS, police, airport, hospital, long-term care and volunteer groups; 52 first and second year medical students from the Schulich School of Medicine & Dentistry each spent six weeks within the SWOMEN region working with community healthcare leadership and allied professionals to develop MedQUEST curriculum as well as see rural medicine practice up close and personal

Key Program Statistics

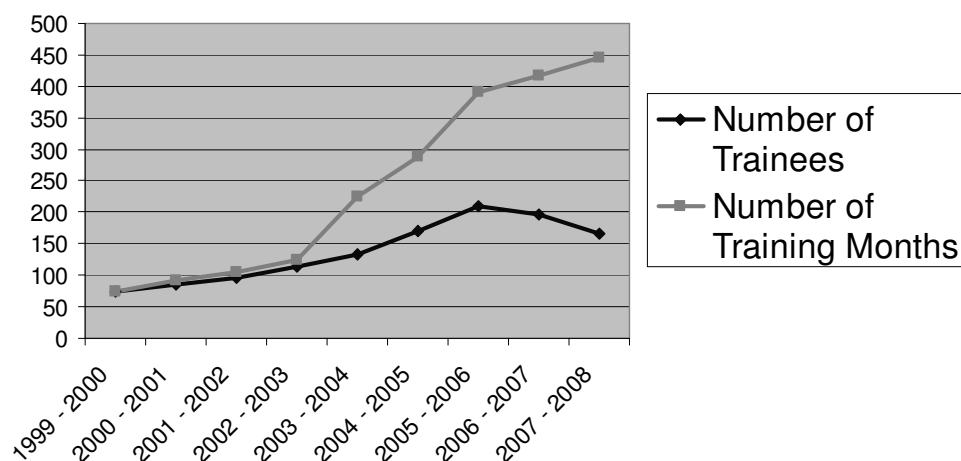
SWOMEN Postgraduate Training 1999 - 2008



Bruce Maitland
Manager, SWOMEN

- Manages SWOMEN Rural/Regional and Windsor Programs
- Responsible for Faculty and community affairs, Student Services, Human Resources, Marketing/Communications
- Oversees Finance and Learning Resources

SWOMEN Undergraduate Training 1999 - 2008



Dr. Kenneth A. Harris
Director, SWOMEN

Southwestern Ontario Medical Education Network

Recognition of Faculty, Staff and Students

- Dr. Mark Awuku received the 2008 OMA Advocate for Students Award
- Dr. Jim Silcox was named a 3M National Teaching Fellow (former SWOMEN Faculty Director)
- Dr. Tamison Doey received the Faculty Support for Research in Education (FSRE) Award for "Recruitment and Retention of Faculty for a Community-based Academic Psychiatry Department"
- Dr. Raphael Cheung received the 2007 Douglas Bocking Award given annually to a member of faculty who has made an outstanding contribution to advancement of medical education during the previous four years



Brenda Hennessey

Administrative Coordinator

- SWOMEN Financials
- Preceptor and Academic Director Remuneration
- Administers Faculty Appointment Process
- Administrative support for Associate Director, Education and Manager, SWOMEN



Charlotte Sikatori

Program Coordinator

- Faculty and Student Relations
- SWOMEN Newsletter Editor and Event Coordinator
- Data Collection and Outcome Measurement (Postgraduate Rural Regional Program)
- Supports Assistant Dean Rural/Regional and Rural/Regional Academic Directors



Kathy VanDinther

MedQUEST Coordinator

- Overall coordination of MedQUEST
- Community liaison, counsellor contact
- MedQUEST communications, development and annual reporting
- MedQUEST website



Dr. Raphael Cheung

Assistant Dean, SWOMEN Windsor



Dr. Tom Lacroix

Assistant Dean, SWOMEN Rural/Regional

SWOMEN Windsor Best Teacher Awards (voted by students)

General Surgery
Anaesthesiology
OB GYN
ER
Paediatrics
Psychiatry
Internal Medicine
Family Medicine

Dr. Carman Iannicello
Dr. Bill Taylor and Dr. Ed Roberts
Dr. Rahi Victory
Dr. Tony Meriano
Dr. Mark Awuku
Dr. John Villella
Dr. Wassim Saad
Dr. Catherine Yanchula

No Photo Available

Kanssa El-Sayegh

Rural Regional Project Coordinator

- SWOMEN Website
- Promotional Materials
- Project Calendars
- Database management/program assessment
- Special funding financials

Southwestern Ontario Medical Education Network



Jeanne Hickey

Program Coordinator, SWOMEN Windsor

- Responsible for administration of the SWOMEN Windsor Program



Linda Wright

Administrative Assistant

- Administrative support for the SWOMEN Windsor Program and Windsor office



Beverly Nicholls

Education Coordinator

- Overall administration of the Departments of Surgery and Obstetrics & Gynecology in regards to clerk and resident medical training
- Education Coordinator to the Academic Directors of Surgery, OB GYN and Windsor faculty



Christine Gignac

Education Coordinator

- Overall administration of the Internal Medicine CTU in regards to clerk and resident medical training
- Education Coordinator to the Academic Director, Internal Medicine and Windsor faculty



TBA

Education Coordinator

- Overall administration of the Paediatric CTU in regards to clerk and resident medical training
- Education Coordinator to the Academic Director, Paediatrics and Windsor faculty



Christine Mackie

Education Coordinator

- Overall administration of the Departments of Psychiatry and Family Medicine in regards to clerk and resident medical training
- Education Coordinator to the Academic Directors Psychiatry, Family Medicine and Windsor faculty

For further information, please contact the SWOMEN London office at 519-661-2111 or e-mail bruce.maitland@schulich.uwo.ca

Windsor Program



Program Overview

- The distributed Undergraduate Medical Education Program of the Schulich School of Medicine & Dentistry is an integrated four year program that is delivered by the Windsor Program, a community-connected medical program
- Admission to the Windsor Program is through the Schulich School of Medicine & Dentistry admissions process
- Windsor Program students have full access to all students services at both the University of Western Ontario and the University of Windsor
- The structure of the curriculum being delivered in Windsor is identical to that delivered in London
- All students, both in London and Windsor, are required to meet the same learning objectives and pass identical evaluations; lectures are delivered simultaneously by the same presenter from either the Windsor or London location via videoconferencing
- Each course in the curriculum has a range of formats including lectures, small group sessions, laboratories, practical clinical sessions, course-directed independent study, on-line exercises and student-directed independent learning
- All lecture materials are available to students; support materials for the curriculum are available to all students by WebCT
- Inter-professional health collaboration is ongoing with the faculties of Nursing, Psychology, Human Kinetics, Pharmacology and Physiology at the University of Windsor

Past Year's Accomplishments

- The Medical Education Building Committee managed construction of the 30,000 sq ft. Medical Education Building on the University of Windsor campus
- The Medical Education Building earned a certification for LEED (Leadership in Energy and Environmental Design); building features include an atrium entrance hall with a "living wall," two multi-media classrooms, ten group-learning suites, anatomy labs and a clinical skills facility
- Administrative staff and faculty hires are in place and supporting the delivery of the first year program
- Dr. Tom Scott appointed as Associate Dean, Windsor Program and Director of Medical Studies, University of Windsor
- "Meet & Greet" events invited doctors to learn more regarding the Windsor program and to identify their interest in becoming part of the faculty as a lecturer, facilitator or Course Coordinator
- Appointed Course Coordinators responsible for delivery of the various components of the first year curriculum
- Basic scientists appointed from the University of Windsor
- The Leddy Library at U of W to support Windsor Program students through the appointment of a dedicated Health Sciences Librarian
- Faculty development ongoing; a number of workshops to prepare faculty and staff held
- Numerous faculty committees formed for the Windsor Program
- Successful site visits from American and Canadian Accreditation bodies
- Developed a website to facilitate communication with the public for the Windsor Program
- Community Outreach provided two successful mini-medical school lecture series
- A quarterly Windsor Program Newsletter was established
- Affiliation in place with the Multicultural Council of Windsor and Essex County to address the diverse ethnic culture of our community

Windsor Program

Key Program Statistics

- Twenty-four students accepted into the charter class in the Windsor Program and will be part of the class of 147 students graduating from the Schulich School of Medicine & Dentistry in 2012
- Each year an additional 24 students will be accepted into first year medical undergrad studies; by 2012 there will be 96 students in the Windsor Program



Dr. Tom Scott

Associate Dean, Windsor Program

- Responsible for academic leadership of the Windsor Program; curriculum development and review, faculty and preceptor recruitment and promotion of research



Ann Sovan

Manager, Windsor Program

- Supervises Windsor Program staff and supports the development and delivery of the Windsor Program



Gloria Bortolin

Clinical Skills Facility Coordinator

- Manages the Clinical Skills Facility suite and supports the delivery of the Clinical Methods course



Paula Pavan

Administrative Assistant to the Associate Dean

- Assists Dr. Scott in his day-to-day activities and management of his calendar



Kelly Ducharme

Pre-Clinical Coordinator Year 1

- Coordinates and supports Course Coordinators in the delivery of the Year 1 program



Michael Farquhar

Admissions/Student Affairs Officer

- Addresses Admissions inquiries and provides ongoing support to medical students

For further information, please contact the Windsor Program office at 519-561-1411 or e-mail ann.sovan@schulich.uwo.ca