

Table of Contents

A Message from the Dean	1
A Note from the Associate Director, Education	2
Education Office	3
Admissions & Student Affairs	4
Undergraduate Medical Education	7
Postgraduate Medical Education	14
Continuing Medical Education	18
Educational Research & Resources	21
Clinical Skills Learning Program	22
Community Outreach	24
e-Learning	26
Educational Evaluation	27
Faculty & Staff Development	28
GAMES	30
Southwestern Ontario Medical Education Network	31

A Message from the Dean



It has been another extremely busy and successful year of activity in the Education Office.

In particular, I would like to extend my thanks once again to faculty and staff in Undergraduate and Postgraduate Medicine for their contribution to the accreditation processes. Both site visits went extremely well, with both teams commenting positively on the environment and the commitment to education in this School. I would also like to recognize those involved in implementing the curricular realignment for Year 1 Medicine, and the work in progress for Year 2. By all accounts, the students have responded positively to the changes. I appreciate the forbearance of faculty members who have had to adapt to the changed curriculum and the enthusiasm of so many of you.

We have also undertaken the initial steps in the expansion of the Doctor of Medicine program to Windsor. I recognize that the deadline of September 2008 is a daunting challenge but, given the progress to date, I am also confident we can meet the deadline and be well prepared to welcome 24 students to Windsor next year.

Here are just a few of the additional highlights you will find in this report:

- The extension of non academic support services to dentistry students, graduate students and postgraduate trainees
- The expansion of Postgraduate Medical Education training spaces available to both Canadian and International Medical Graduates
- Approximately 30 per cent increase in both the number of residents and training months in postgraduate medical education provided through SWOMEN
- Nearly tripled the number of active volunteer patients available to assist with training through the Clinical Skills Learning Program
- Brought two leadership development training modules from the Physician Management Institute (CMA) to the School; both were filled to capacity.
- Reached 945 community members through four outstanding outreach series
- Provided 16 full-day Continuing Medical Education courses and workshops

This second annual Education report is both a great resource for others within the School and also a clear reminder that Education is at the heart of what we do at Schulich Medicine & Dentistry. I thank all of the staff and faculty members for their continued dedication and hard work towards providing a truly outstanding education for our students and residents.



Carol P. Herbert
Dean, Schulich School of Medicine & Dentistry

A Note from the Associate Director, Education

This year's Medical Education Report looks back on a successful 2006-2007 academic year.

The just-concluded year was one of the busiest on record, with both the Postgraduate and Undergraduate Medical Education Programs undergoing accreditation and the kick-off of the expansion of the Schulich School of Medicine & Dentistry to the University of Windsor.

With respect to accreditation, everyone in Education was pleased with the initial stated findings of the accreditors. After visits to Schulich by The Royal College of Physicians and Surgeons of Canada and the College of Family Physicians of Canada, our Postgraduate Medical Education training programs were found to continue to meet national accreditation standards.

The Undergraduate Medical Education Program, upon visits from the Liaison Committee on Medical Education and the Committee on Accreditation of Canadian Medical Schools, received a highly favourable first report with additional information forthcoming.

It's important to note that in recognition of the integral role Schulich Windsor plays in both current and future training, both accreditations involved site visits to Schulich's Windsor Program.

In all, Schulich was recognized for its dedication to education and research; clinical experiences provided to Schulich students and residents were cited as a key strength.

Many thanks to everyone in Education, the Dean's Office and the Basic and Clinical departments who contributed to, and participated in, the accreditation preparations and visits and to those who have, and will continue, building the Schulich Windsor Program.

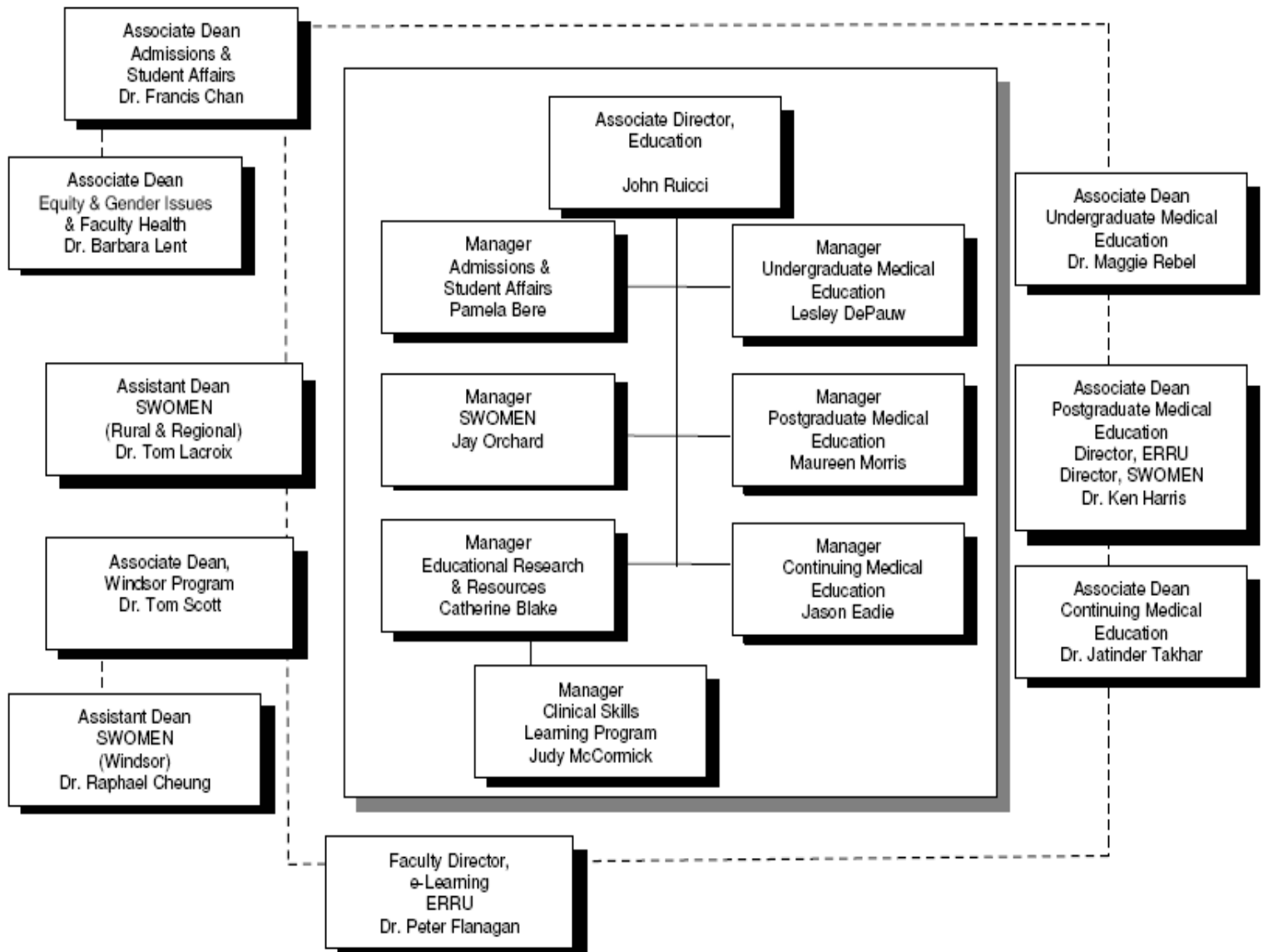
Regards,



John G. Ruicci
Associate Director, Education
Schulich School of Medicine & Dentistry
The University of Western Ontario



Education Office



Admissions & Student Affairs

Equity & Gender Issues and Faculty Health

Program Overview - Medicine

- Students may apply to multiple schools through the Ontario Medical School Application Service
- The total number of applicants that applied to Schulich Medicine in September 2006 was 2,531
- Of the 2,531 applicants, 440 were interviewed for 139 positions
- Programs offered include: Undergraduate MD, Combined MD/PhD, Concurrent MD/BESc and the Oral and Maxillofacial Surgery/MD/MSc Program
- The Undergraduate Medical Program is four years in duration

Program Overview – Dentistry

- Students apply to the individual dental program(s) to which they wish to attend
- Entrance requirements vary according to program; entrance to the Schulich Dentistry undergraduate program is based on the combined competitiveness of academic grades, the Dental Aptitude Test (DAT) and interview scores; students must have completed specific science course prerequisites
- The total number of applicants that applied to Schulich Dentistry in September 2006 was 591 – this included 486 national and 5 international applicants
- Of the 591 applicants, 247 were interviewed for 56 positions
- Programs offered include: Undergraduate DDS, Internationally Trained Dentists (ITD) Program and Master of Clinical Dentistry (MCID) Program
- The undergraduate dental program is four years in duration

Past Year's Accomplishments

- Centralized admission functions for both Medicine and Dentistry and expanded non-academic support services for medical and dental students, graduate students and post-graduate medical trainees
- Interviewed and accepted more applicants from Southwestern Ontario into the Medicine program (more than a two-fold increase over the previous year)
- Initiated personal 15-minute meetings with all new students (139 in Medicine and 56 in Dentistry) early in the academic year to familiarize them with the staff and services of the Office
- Coordinated the White Coat Ceremony, the Career Night and Convocation for medical students
- Strengthened the Indigenous Student Support and Admission Program by providing support to the Indigenous Student Affairs and Admission Committee
- Expedited referrals for students and trainees to health care professionals with a wait-time between one to two weeks
- Provided dedicated support to Dr. Rob Hammond, Faculty Advisor of the Medicine Student Support Team, in coordinating the mentorship program and the student health and wellness programs
- Facilitated the appointment of Dr. Mark Darling as the Faculty Advisor of Health and Wellness Programs for students in Dentistry
- Represented the School at the four-day Toronto Education Fair and the Fall/Spring Western Preview days; provided academic counselling to thousands of potential applicants
- Effectively responded to concerns from individuals (faculty, residents, medical and dental students, and staff) with respect to equity and gender issues
- Presented to residents, students, departmental rounds and to faculty-wide faculty development on issues related to equity and gender issues, faculty health, and professionalism

Admissions & Student Affairs Equity & Gender Issues and Faculty Health

Accreditation

- With regards to the Undergraduate Medical Education Accreditation, the Admissions & Student Affairs Associate Dean and Manager prepared information from which a submission was created for the Liaison Committee on Medical Education (LCME)
- In addition to a written submission, an oral presentation was made to the visiting survey team during the accreditors' visit; Admissions & Student Affairs received a favorable review by the survey team

Highlights of Review:

- The Admissions process was deemed well organized, fair, equitable and in-line with the goals of Schulich Medicine
- Schulich students reported a higher level of satisfaction with the academic counseling they received compared to the national average
- The survey team and the Schulich students both commended the Associate Dean of Admissions & Student Affairs and his staff for their excellent service in regard to personal counseling support; Schulich students reported a higher degree of satisfaction with personal counseling than their national counterparts



Dr. Francis Chan
Associate Dean, Admissions &
Student Affairs



Dr. Barbara Lent
Associate Dean, Equity & Gender
Issues and Faculty Health



Pamela Bere
Manager, Admissions & Student Affairs

- Responsible for management of all activity associated with the Admissions & Student Affairs Program

Admissions & Student Affairs Equity & Gender Issues and Faculty Health

Key Program Statistics - Medicine

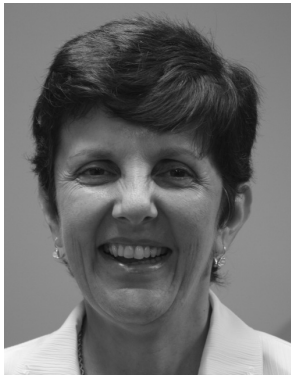
Class of 2010 Profile

- 139 entry positions
- 76 males and 63 females
- Average age: 22 years old
- 40% of the class from Southwestern Ontario region

Key Program Statistics - Dentistry

Class of 2010 Profile

- 54 entry positions
- 27 males and 27 females
- Average age: 24 years old



Trish Ashbury

Administrative Coordinator,
Dental Admissions

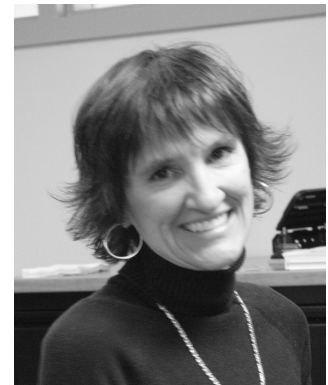
- Corresponds with applicants concerning all aspects of the application process
- Secretary to the Dentistry Admissions Committee



Darla McNeil

Special Projects Coordinator -
Admissions & Student Affairs

- Supports the Associate Dean and Manager with initiatives to automate and streamline Admissions' processes



MaryAnn Kennard

Administrative Assistant

- Involved in all stages of the admissions cycle



Gerry Niles

Administrative Assistant

- Front Line Person for Admissions & Student Affairs and Equity & Gender Issues and Faculty Health Office
- Assistant to the Manager, Admissions & Student Affairs Office
- Credentialing Coordinator
- Commissioner of Oaths

For further information, please contact the Admissions and Student Affairs office at 519-661-3744 or e-mail admissions@schulich.uwo.ca

Undergraduate Medical Education

Program Overview

- Four-year program leading to Doctor of Medicine (MD) degree
- Provides the opportunity to acquire knowledge, skills and attitudes required for graduate/postgraduate studies leading to clinical practice, research or other medical careers
- Education is a blend of lectures, laboratory exercises, small group learning and supervised clinical experience

Patient-Centred Curriculum

- The patient is the centre of our clinical learning
- Patient-centred care requires a relationship in which patients feel their concerns are acknowledged and the physician has understood their situation
- Patients and physicians work together to find common ground regarding management - reaching a mutual understanding of the problem, treatment, goals and roles
- Incorporates ecosystem health, the study of the interrelation between human health and economic, social and ecological factors

Curriculum; Years 1 & 2

- Provide a solid grounding in the basic and clinical sciences through integrated courses of study
- Teaching methods include: small group tutorials, problem based learning, lectures and large group discussions, self-instructional materials and laboratories
- Early patient contact emphasizes the patient-centered approach
- A corresponding case is introduced at the beginning of each week or theme
- Opportunities for student involvement in the community
- First-year students participate in Rural Regional Discovery Week to gain clinical experience and exposure to medicine in a smaller Southwestern Ontario community
- Clinical Methods – students spend three to four hours per week in small group clinical teaching; total 90 hours per student in Year 1; 167.5 hours per student in Year 2
- At the end of Year 1, students spend one full week in a rural / regional placement



Dr. Margaretha Rebel
Associate Dean, Undergraduate
Medical Education

- Overall academic responsibilities for Undergraduate Medical Education



Lesley DePauw
Manager, Undergraduate
Medical Education

- Manages and oversees all aspects of the four year Undergraduate Medical Program



Diane Geurkink
Curriculum Materials
Coordinator

- Electronic Course Materials for Years 1 & 2 Transition Period

Curriculum Years 3 & 4

- Include a 52-week Clerkship, clinical electives and advanced basic medical science electives
- During Clerkship Year 3, students spend 49 weeks in clinical teaching (approximately 40 hours/week); this includes rural regional placements in the SWOMEN network
- During the third-year Clerkship, the student becomes an active member of clinical care teams in: Family Medicine, Medicine, Obstetrics and Gynaecology, Paediatrics, Psychiatry and Surgery
- Under supervision, clerks are given graded responsibility in the diagnosis, investigation, and management of patients in hospital, clinic and outpatient settings
- Third-year students must complete at least one four-week rotation outside of London or Windsor
- Year 4 clinical electives are arranged by students in any discipline, at Schulich or in other centres; students spend 16 weeks doing clinical placements in London or elsewhere in Canada; option to study in a third world country through the Medical Electives Overseas program
- After year 4 clinical electives, students participate in advanced courses in clinical and basic sciences
- Transition Period – Year 4 students spend 12 weeks in class, enrolling in 240 hours of study from a choice of 480 hours of short courses

Past Year's Accomplishments

- Redesign of the Year 1 & 2 curriculum also included revamping the methods of student assessment and increasing the amount of feedback to both faculty and students in regard to assessment
- Year 1 students reported positively on the curriculum changes



Suzanne Belanger
Administrative
Coordinator

- CurrMit (Curriculum Objectives Information & Map)
- Tutorial information and Tutor recruitment for weekly cases (PCCIA)
- Support for Evaluation Committee



Sarah Rwankole
Visiting Elective
Coordinator

- Visiting Student Elective Program



Dawn MacDonald
Administrative
Coordinator

- Community Health Courses
- Year 4 Electives
- Scholarships & Awards

Undergraduate Medical Education

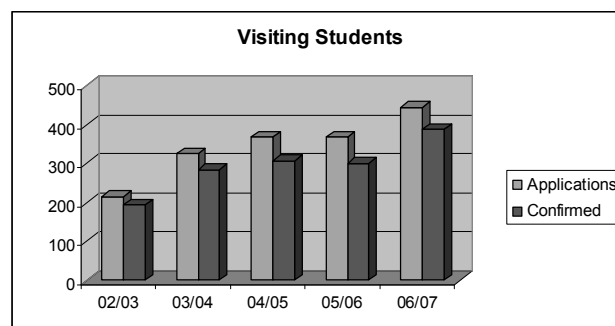
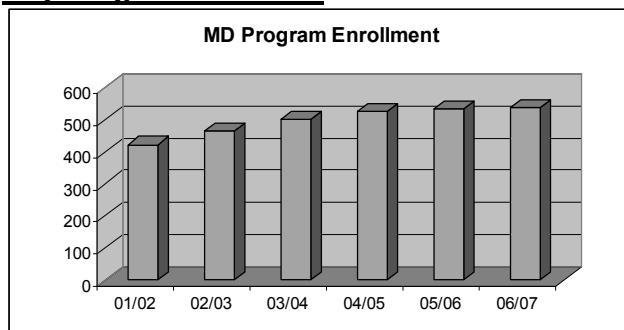
Past Year's Accomplishments (cont.)

- Continued with roll-out of the realigned curriculum for Year 2 (2007-08) to complete the re-alignment of 18 courses
- Worked diligently with the Educational Evaluation Unit to develop a new program evaluation process for the revised curriculum. A renewed Program Evaluation Committee is in place to monitor progress. A process for the Evaluation of clerkship rotations has been refined and is working well.
- A new Appeals Committee is now in place to hear both Undergraduate & Postgraduate Appeals
- 13 summer students were hired to assist Year 1 & 2 Course Coordinators in re-developing courses. Close work with the e-Learning unit to re-develop on-line learning sites to enable greater use of the advanced features in the program was initiated. The re-development of such tools will also be reflected in the Year 3 & 4 teaching sites.
- Changes in the daily teaching schedules to allow greater utilization of the Don Rix Clinical Skills Learning Facility enhanced the teaching of Clinical Methods; the facility will run at full capacity in 2007-08
- Worked closely with Medical Affairs and Information Services to ensure secure electronic teaching cases and their availability to students through enhanced technology in the Clinical Skills building

Accreditation

- The Liaison Committee on Medical Education (LCME) and Committee on Accreditation of Canadian Medical Schools (CACMS) site visit in April was positive; we await the final report on our accreditation status

Key Program Statistics



Enrollment MD Program 2006-07

2006-07	Women	Men	Total
Year 1	64	75	139
Year 2	63	71	134
Year 3	72	59	131
Year 4	68	64	132
Total	267	269	536



Rebecca Bannerman
Clinical Coordinator

- Year 3 Clerkship
- Support for Clerkship & Electives Committee

Recognition of Faculty, Staff and Students

The Alpha Kappa Kappa Gold Medal
William Leeper

The Alexander Hotson Memorial Scholarship

Amelia Barry

The Andrew D. Mason Memorial Award

Anita Cheng

Dr. Angus McLachlin Clerkship Scholarship in Surgery

Bonnie Tsang

The Dr. Archibald McCausland Memorial Prize in Psychiatry

Michelle Ngo

The Benjamin Weidenbaum and Cecelia Rotstein Scholarship

Ann Marie McKenna and Deborah Norrie

Bioethics Scholarship

Emily Kelly

The Dr. C.C. Ross Memorial Prize in Surgery

Luke Harris

The Carleton C. Whittaker Memorial Scholarship in Psychiatry

Christina McDonald

Dr. Charles E. Frosst Medical Scholarship (Clinical Pharmacology to determine)

Jennifer Tong

The Class of 1917 Prize

Julie Johnstone

The Class of '43 B Award

Dianna Wang

The Class of 1951 Frank R. Clegg Memorial Award

Debbie Norrie

The Class of '55 Prize

Lisa VanHouwelingen

The Collins Memorial Prize In Geriatric Medicine

Kiara Smith

Dean Carol P. Herbert Award in Health Advocacy

Andrea Covelli

The Elena B. Wolf Memorial Award

Ann Marie McKenna and Michael Wan

Dr. Francis S. Brien Clerkship Scholarship in Medicine

Luke Harris

The Dr. F. R. Eccles Scholarship

Andrea Ens



Lee-Anne McAvoy

Student Assessment
Coordinator

- Student Assessment Years 1 & 2
- Faculty Evaluation
- Support Progression & Awards Committee
- Support Appeals Committee



Mary Peterson

Rural/Regional
Coordinator

- Rural Medicine program

Undergraduate Medical Education

The Dr. Fred N. Hagerman Memorial Prize in Surgery

William Leeper

Gerry & Vi Livingston Award in Medicine

Sean Peterson

The Dr. Henri Breault Award

Rebecca Stacpoole

Hughes McKellar Rural Southwestern Ontario Medical Residency Award

Scott McIntosh

The I.W. Mann Award

Carola Vanderspek and Luke Harris

The JB Campbell Memorial Scholarship in Heart & Circulation

Ali Rashad

The J.B. Campbell Memorial Scholarship in Medicine

Sarah Armstrong

Joan and Geno Francolini Award in Medicine

Justin Morgenstern

The Dr. John Agnos Memorial Award in Diagnostic Radiology

Jeremy O'Brien

The John C. Rathbun Memorial Award in Paediatrics

Debbie Norrie

Dr. Jean Fraser Campbell Clerkship Scholarship in Obstetrics & Gynaecology

Catherine Andrus

Kellogg Foundation Award in Medicine

Diane Park

The Kingswood Scholarship

Ilana Halperin

The Kwitko Family Scholarship in Obstetrics/Gyneacology

Yvonne Leong

The Lange Award

Sean Peterson

The Lange Award (CEC / PA)

Christina McDonald

The Leonard Sutcliffe Memorial Scholarship

Ann Marie McKenna

Margaret A. Banks Prize in Geriatric Medicine

Zain Kassam



Sophie Palmieri

Program Coordinator

- Clinical Methods – Years 1 & 2 Schedules
- Support for Curriculum Committee
- Support for Pre-clerkship & Transition Period Committee
- Maintain UME webpages



Dale Shelley

Visiting Elective Coordinator

- Visiting Student Elective Program

The Martin and Mary LeBoldus Award

Amandeep Grewal

The Martin & Mary LeBoldus Award for Outstanding Clinical Clerk (CEC/PA)

Luke Harris

Dr. Martin J. Bass Clerkship Award in Family Medicine

Monique Renaud

The Martin J. Inwood Award

Eisar Al-Sukhni

The Dr. Marvin L. Kwitko Scholarship in the Musculoskeletal System

Todd Greenspoon

The Medical Alumni Gold Medal

Kavitha Passaperuma

Meds Class of 1940 Scholarship in Medical Sciences

Stephanie Leung

The Merck, Sharp and Dohme Award in Pharmacology

Stephanie Leung

The R. A. Kinch Prize in Community Medicine

Ruthanne Williams

The Rachel Slobasky Kaplan Scholarship

Stephanie Leung

The Radiologists of Western Ontario Award in Diagnostic Radiology

Vajid Khan

The Rix Family Award for Introduction to Medicine

Xianging Fan

The Robert K. Annett Memorial Award

Jacquie Schwartz

The Robert L. Taylor Southwestern Ontario Medical Residency Award

Sara Puente, Andrea Sereda and Lisa VanHouwelingen

Dr. Rob Tingley Class of '95 Developing Countries Award

Andrea Covelli

The Rowntree Prize in Medical History

Allison Maciver

The Southern Ambassadors' SWOMEN Windsor Clerkship Scholarship in Family Medicine

Vanessa Poliquin

The Southern Ambassadors' SWOMEN Windsor Clerkship Scholarship in Obstetrics & Gynaecology

Caitlin Dunne

The Southern Ambassadors' SWOMEN Windsor Clerkship Scholarship in Paediatrics

Guillaume Poliquin

Undergraduate Medical Education



The Southern Ambassadors' SWOMEN Windsor Clerkship Scholarship in Psychiatry

Vanessa Poliquin

The Southern Ambassadors' SWOMEN Windsor Clerkship Scholarship in Surgery

Bonnie Tsang

The Southern Ambassadors' SWOMEN Windsor Clinical Clerk Award

Luke Jagiello

The Southern Ambassadors' SWOMEN Windsor Compassion Award

Vanessa Poliquin

The Southern Ambassadors' SWOMEN Windsor Prize in Anesthesiology

Sanjay Patel

The Southern Ambassadors' SWOMEN Windsor Prize in Emergency Medicine

Luke Jagiello

The Southern Ambassadors' SWOMEN Windsor Prize in Medicine

Jessica Lefort

SWOMEN Award for Excellence in Rural Medicine

Norman Furtado and Rejean Duwyn

The T.H. Coffey Memorial Prize in Physical Medicine and Rehabilitation

Steven Macaluso

The Theo Mary Anderson Award in Family Medicine

Scott McIntosh

The UME Prize for Outstanding Extracurricular Accomplishment

Noah Ivers

The University of Western Ontario Award in Cardiology

Kavitha Passaperuma

Dr. V. Caroline Graham Award (CEC / PA)

Melissa Chan

Verda Taylor Vincent Scholarship

Emily Claydon

Western Alumni Clerkship Award in Psychiatry

Anne Marie McKenna

Western Alumni Clerkship Scholarship in Paediatrics

Andrea Guerin

W. H. McGuffin Scholarship in Radiology

Mark Kirchoff and Jaron Chong

For further information, please contact the Undergraduate Medical Education office at 519-661-2076 or e-mail undergraduate@schulich.uwo.ca

Program Overview

- The purpose of Postgraduate Medical Education (PGE) is to ensure excellence in the educational experience of all trainees and to assist the faculty in delivering an excellent educational experience
- The Schulich School of Medicine & Dentistry at The University of Western Ontario offers 49 PGE training programs leading to certification by either the College of Family Physicians of Canada (CFPC) or the Royal College of Physicians and Surgeons of Canada (RCPSC)
- Postgraduate training programs range from two to seven years, with the opportunity for fellowships following residency
- There are two main teaching centres situated on five sites affiliated with our postgraduate training programs, including London Health Sciences Centre and St. Joseph's Health Care London
- In addition to the affiliated teaching hospitals, Western has access to an extensive number of rural and community training sites in both northern and southern Ontario; residents from many programs participate in the Southwestern Ontario Medical Education Network (SWOMEN)

Past Year's Accomplishments

- Management of PGE expansion to both Canadian medical graduates and international medical graduates; successfully assisted the Ontario Ministry of Health in meeting their trainee expansion targets
- Successful in filling all designated PGY1 positions
- Acceptance of first resident into new Clinician Investigator Program (CIP)
- New postgraduate training program in Oral Maxillofacial Surgery developed with Schulich Dentistry
- Increase in SWOMEN rural/regional postgraduate resident training months
- Increase in SWOMEN Windsor resident training months and development of Windsor Medicine Clinical Teaching Unit
- Hosted site visits from PAIRO, Saudi Arabian Cultural Bureau, United Arab Emirates
- Supported postgraduate faculty in attending two CanMEDS Train the Trainer Workshops: "Communicator" in April 2007 and "Collaborator" in June 2007
- Approved generic Program Director Job Description, including suggested resources
- Revised PGE Committee mandate
- Revised PGE Appeal Mechanism along with development of Schulich School of Medicine & Dentistry Appeals Committee
- Continue to invest in increased support for our residents and fellows
- Doubled our support for the Resident/Fellow Travel Reimbursement Fund
- Continue PGE database upgrades, including reporting, on-line registration, and single-sign on



Dr. Kenneth A. Harris
Associate Dean, PGE

- Overall administrative responsibility for Postgraduate Medical Education, including residents & fellows



Maureen Morris
Manager, PGE

- Supports trainee eligibility, training positions, PAIRO-CAHO Agreement, Accreditation
- Finances for PGE & Clinical Education Budget
- CaRMS, Transfers
- External liaison for CPSO, MOHTLC, RCPSC, CFPC, COFM, OPHRDC

Postgraduate Medical Education



Renata Mak

Program Coordinator

- Internal Reviews
- RCPSC & CFPC Survey
- PGE Committee support
- PGE Policy and Procedure Manual
- AWC Programs (Accreditation Without Certification)
- CaRMS Support
- PGE Webmaster



Marnie Bensette

Visa Trainee Coordinator

- Assessment of International applications for residency and fellowships
- Liaison with sponsors and programs
- Liaison with immigration, licensing and accreditation bodies
- Orients visa trainees

Past Year's Accomplishments (cont.)

- Collaborated with London hospital Medical Affairs to streamline joint projects (including Pool C issues, orientation, registration and credentialing processes, Clinical Education Budget)
- Successful Job Fair in September 2006 for residents, medical students, allied health professionals and surrounding communities
- Michelle Sullivan, Visa Trainee Coordinator, PGE Office, retired in May 2007 after 23 years working within the Education Office of the Schulich School of Medicine & Dentistry

Accreditation

- On-Site Survey by the Royal College of Physicians and Surgeons of Canada (RCPSC) and the College of Family Physicians of Canada (CFPC) occurred October 15-20, 2006
- All postgraduate programs were reviewed and evaluated by a team of professionals from both Colleges and representatives of the Licensing Authorities. The Accreditation team also met with local authorities and leaders to assess the educational environment and the attitudes towards the educational mission
- Follow up Accreditation meetings occurred in January 2007 at RCPSC and in May 2007 at CFPC. Strengths and weaknesses of Postgraduate Office as well as each training program were identified in the survey report with appropriate follow up planned for the coming year. All active postgraduate training programs at Schulich were found to continue to meet national accreditation standards

Key Program Statistics

PGE Trainee Enrollment

	2000-01	2001-02	2002-03	2003-04	2004-05	2005-06	2006-07
Residents	375	379	396	437	469	508	560
Fellows	74	69	82	82	99	103	98

** Trainee numbers taken from national census performed annually on November 1 by the Canadian Post-M.D. Education Registry (CAPER)

Recognition of Faculty, Staff and Students

2007 Schulich Educator Awards (Graduate/Postgraduate)

Schulich Distinguished Leader Award in Education

Dr. David Hollomby - Medicine

Schulich Leader Award in Education

Dr. Sal Spadafora - Anesthesia & Perioperative Medicine

Schulich Educator Awards

Dr. Chris Ellis - Medical Biophysics

Dr. James Gregor - Medicine

Dr. Irene Hramiak - Medicine

Dr. Richard Novick - Surgery

Dr. David Robinson - Psychiatry

2007 CAME Certificate of Merit

Dr. Irene Hramiak - Endocrinology & Metabolism

2007 PAIRO Resident Teaching Award

Dr. Gregory Harding - Vascular Surgery

2007 PAIRO Clinical Teaching Award

Dr. Kevin Fung – Otolaryngology

2007 PAIRO Residency Program Excellence Award

Dr. George Rodrigues - Radiation Oncology

2007 PAIRO Resident Advocate Award

Ms. Sharon Story - Family Medicine

2006-2007 Resident/Fellow Travel Reimbursement Fund Winners

October 2006:

Dr. Amanda Hu (Leadership Prize) - Otolaryngology

Dr. Karen Chu - Ophthalmology

Dr. Roberto Hernandez-Alejandro – General Surgery

Dr. Jessica Hunter-Orange – Family Medicine

Dr. Lauren Lukas VanderSpek – Radiation Oncology

Dr. Krystine Lupe – Radiation Oncology

Dr. Christen Shoesmith - Neurology

Dr. Cory Yamashita - Respiriology

Dr. Jasper Yuen – Radiation Oncology



Tara Coletti

Administrative Assistant

- International appointments assistant
- Manages international applications
- Assists with registration and orientation



Susan Smyth

Registration Coordinator

- Registration & Orientation
- Letters of Appointment
- Licensure
- Leaves of Absence
- Resident Handbook
- Liaison with Western Registrar's Office

Postgraduate Medical Education

Recognition of Faculty, Staff and Students (cont.)

April 2007:

Dr. Anna Mathew (Leadership Prize) – Internal Medicine
Dr. Ida Bruni - Anesthesia
Dr. Miguel Bussiere - Neuroradiology
Dr. Eugene Leung – Nuclear Medicine
Dr. James Warrington – Nuclear Medicine
Dr. Gabriel Chu - Ophthalmology
Dr. Abdel Lawendy – Orthopedic Surgery
Dr. Toni Zhong – Plastic Surgery

2007 CSCI/CIHR Resident Research Prize

Dr. Shiva Jayaraman - General Surgery

2007 P.S.I. FOUNDATION Resident Research Prizes

Dr. Shiva Jayaraman - General Surgery
Dr. Carmela Tartaglia - Neurology
Dr. Jamie Steckley - Neurology
Dr. Sahar Ghorayeb - Family Medicine
Dr. Doron Rabin - Neurosurgery

2006-2007 - The W.J. (Bill) Sibbald Scholarship in Leadership and Medical Education

Dr. Adam Dukelow - Emergency Medicine

2005-2006 Class of '49 Award for Excellence in Teaching by Residents

Senior – Dr. Punkaj Bhatia - General Surgery
Junior – Dr. Jeremy Harris - Vascular Surgery



Julie Stuijbergen

PGE Administrative Assistant

- Academic Half Days, Job Fair
- RCPSC/CFPC Forms (ie. FITER, CCT)
- Evaluations
- Awards
- Certificates of Attendance
- Credentialling
- Support to PGE Associate Dean

For further information, please contact the Postgraduate Medical Education office at 519-661-2019 or e-mail postgraduate.medicine@schulich.uwo.ca

Program Overview

- The Continuing Medical Education (CME) office strives to provide effective and evidence-based CME programs that meet the needs of medical providers via an effective decentralized model of CME delivery
- The CME office is fully accredited by the National Committee on Accreditation of Continuing Medical Education to develop and approve CME programs developed on its own, in collaboration with departments in the Schulich School of Medicine & Dentistry, on behalf of medical or physician organizations and external third-party education companies
- The CME office operates on a cost recovery model, and external funding is generated from a variety of sources, including the development and co-sponsorship of educational programs on a Mainpro-M1 basis (accredited in Ontario), and Section 1 programs (accredited nationally). The CME office is actively involved in co-developing online accredited programs, the endorsement of relevant and unbiased 3rd party programs and the development of Self Assessment Programs and Personal Learning Projects.
- Current objectives include the development of an online portal to enhance options for self directed learning for Canadian and international physicians, which will have a survey capability to conduct needs assessments, as well as to post video archives of medical school rounds. The CME office is also developing an expertise in the areas of unperceived needs assessments and pharmaceutical bias measurement in education.

Areas of Expertise

- Live Mainpro-M1 accredited programs for family physicians approved in Ontario and facilitation of the national accreditation process
- Live Maincert Section 1 accredited programs for Specialists approved nationally
- Online needs assessments targeting regional or national physician audiences by specialty
- Self Assessment Programs accredited under Maincert Section 3 for up to 36 months in both online and print formats
- Personal Learning Projects for specialists endorsed under Maincert Section 4
- Nationally-accredited online learning programs for family physicians and specialists
- Customized industry preceptorship programs
- Regional conference management services



Jason Eadie
Manager

- Maintenance of full accreditation status
- Management of all administrative, strategic and fiscal operations of the unit
- Approval of accredited courses, workshops and seminars
- Planning and implementation of CME programs in collaboration with external health care organizations, associations and the private sector

Continuing Medical Education

Past Year's Accomplishments

- Developed and conducted 16 live full day courses and workshops from September 2006 through May 2007
- Approved over 150 full day courses and workshops for CME credits on behalf of departments in the medical school
- Developed and distributed accredited Self Assessment Programs in Tardive Dyskinesia and Adult ADHD
- Developed and distributed Personal Learning Programs in Prostate Cancer and in Childhood/Adolescent ADHD
- Developed and implemented 11 accredited online programs to assist in fulfilling our mandate to provide physicians with tools to facilitate self-directed learning
- Delivered "Managing Bias in CME" workshops and posters surrounding research conducted using our novel tool to illuminate bias in live continuing educational programs as follows:
 - CACHE Workshop – September 2006 (Workshop)
 - CFPC Accredited Providers Conference – October 2006
 - RCPSC – September 2006 (Poster)
 - GAMES Education Conference – October 2006 (Poster)
 - SACME – March/April 2006 (Poster)
- Published an original research article "Developing an Instrument to Measure Bias in CME" in the Journal of Continuing Education in the Health Professions – Spring 2007
- With the arrival of a new staff member, the CME office now offers complete conference management services to Departments in the Schulich School of Medicine & Dentistry

Key Program Statistics

- Western's target for CME programming includes close to 4,000 practising physicians in a region comprised of 15 counties extending from Windsor, east to Kitchener-Waterloo, north to the shores of Georgian Bay and south to Lake Erie

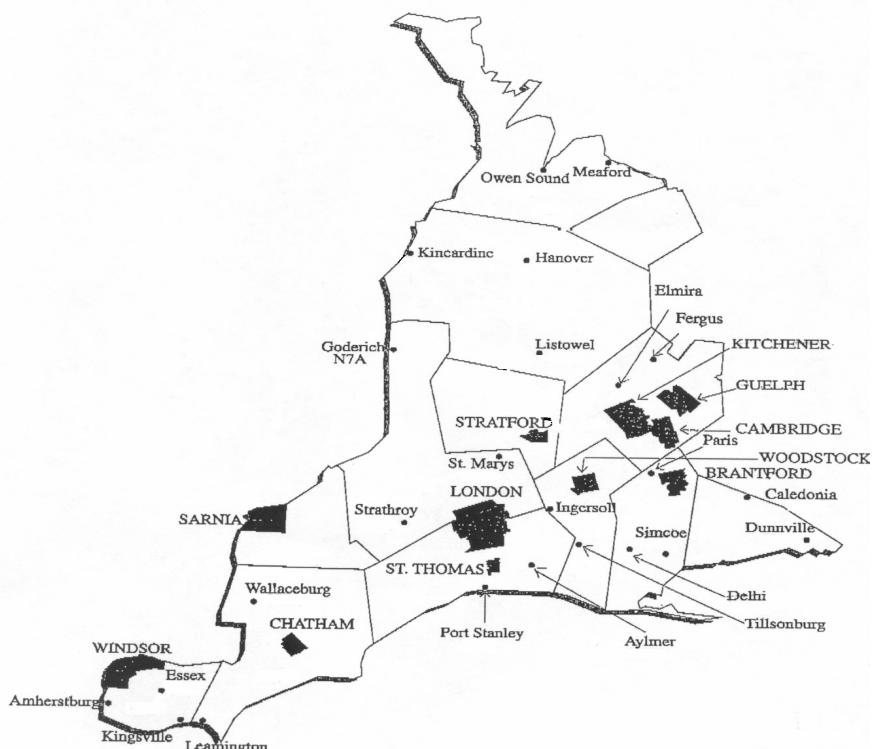


Dr. Jatinder Takhar
Associate Dean, CME

- Ensures the maintenance of full accreditation status of the CME program
- Oversees the management of all administrative, strategic and fiscal operations and activities of the unit
- Contributes to the knowledge, development and the understanding of CME/CPD through the development or participation in a program of research and development consistent with the unit's mission and objectives

Continuing Medical Education

CME's Serviceable Area



Linda Bruce

Program Coordinator

- Administers all aspects of the CME's conference management service
- Program brochure development, direct mail marketing, database maintenance, participant registration and credit card verification
- Manages catering and facility reservation, site set up and staffing, program evaluation, planning committee communications and management



Kathy Dantzer

Administrative Assistant

- Provides administrative support to office staff, faculty and committees
- Handles inquiries from internal and external customer groups
- Maintains web site and registration module
- Logs and reviews all Incoming CME applications for completeness, tracks sign-off process and notifies clients and Colleges of accreditation status
- Maintains administrative processes and systems

For further information, please contact the Continuing Medical Education office at 519-850-2904 or e-mail cme@schulich.uwo.ca

Educational Research and Resources

Program Overview

Under the direction of Dr. Ken Harris, the Educational Research and Resources Unit (ERRU) is made up of six subunits, all of which offer School-wide support for education.

- Clinical Skills Learning Program – offers the tools for hands-on learning and evaluation of undergraduate and postgraduate medical students (including simulated patients); also supports educational programs in the Faculty of Health Sciences
- Community Development - outreach initiatives to the local community through free or low cost programs that allow the public to explore topics in medical science and research
- Educational Evaluation - collaborates across all units to measure, evaluate, and generate program and curriculum evaluations
- e-Learning Unit provides instructional design expertise and support for the development and maintenance of distributed learning courses
- Faculty & Staff Development - delivers workshops for faculty, residents, fellows, graduate students and staff; supports Teaching Awards, the Mini Fellowship program and other internal grants, provides on-site support in the Valberg Educational Resource Centre
- GAMES (Group for the Advocacy & Advancement of Medical/Dental Education) – a group to encourage scholarship in education



Dr. Kenneth A. Harris
Director, ERRU

Educational Research and Resources

Clinical Skills Learning Program

Program Overview

- Provides students, residents, faculty members and other healthcare learners with a unique experiential learning resource
- Simulated Patients (SPs) are people who have been carefully coached and trained to simulate an actual patient, including the history and physical findings, socio-economic and educational background, emotions and personality characteristics
- Volunteer Patients (VPs) are real patients with stable physical findings who are willing to tell their real stories and be physically examined
- Both SPs and VPs offer a readily available and standardized tool for teaching students, residents and other healthcare professionals new communication, interviewing and physical examination skills, allowing for refinement of such skills and the evaluation of learner performance

Past Year's Accomplishments

- Introduction of several new blocks of physical examination teaching
- Addition of one new full time staff member – Rebecca Young joined us in April 2007
- Implementation of two new Objective Structured Clinical Examinations (OSCEs), which were held in the Clinical Skills Building
- First iteration of the new Volunteer Program – nearly tripled the number of active volunteers available

Accreditation

- In support of the Medical Education Accreditations, the Clinical Skills Learning Program team provided answers to questions used in preparation of the required documentation
- In addition to information, physical site tours of the Clinical Skills Learning Building were given; the Clinical Skills Learning Program received favorable reviews by the survey teams, with clinical training provided at Schulich identified as a key strength

Key Program Statistics

- 380 active Simulated Patients, with a waiting list of 100 more
- 55 active Volunteer Patients (increased from 20 last year)
- More than 6,000 contact hours (including both teaching and evaluation) with undergraduate medical students per academic year
- Supporting:
 - 1,500 faculty members
 - 540 undergraduate medical students
 - 600+ postgraduate residents and fellows
 - 250 dental students and numerous other healthcare providers including pharmacy, social work, physiotherapy, nursing and external organizations including the Medical Council of Canada, the Pharmacy Examining Board of Canada, the College of Physicians and Surgeons of Ontario, the Society of Obstetricians and Gynaecologists of Canada and numerous others

Educational Research and Resources

Clinical Skills Learning Program



Judy McCormick

Manager

- Responsible for the overall management and administration of the Clinical Skills Learning Program (CSLP)
- Creates and oversees the planning and administration of all activities, educational programs and evaluations
- Plans and implements all OSCEs

Jane Graham

Administrative Assistant

- Administrative and reception duties

Rebecca Young

Coordinator

- Plans and implements all Clinical Methods teaching



Susan North
SP Trainer



Stephanie Foreman-Brown
Senior SP Trainer

For further information please contact the Clinical Skills Learning Program office at 519-661-3748 or e-mail clinical.skills@schulich.uwo.ca

Program Overview

Since 2003 the Schulich School of Medicine & Dentistry has offered a variety of free or low cost programs designed for the general public. The goals of these programs are to:

- Open the doors of the medical and dental schools to the community
- Help the public learn more about the study of medicine and dentistry
- Explore the scientific basis of health and disease
- Understand how research discoveries translate into innovations and treatments

Past Year's Accomplishments

Mini Medical School, October/November 2006

- A lecture series where faculty teach key concepts, using basic science and clinical topics, to get at some of the underlying principles of medicine

Café Scientifique, January 2007

- A discussion group that gives members of the public an opportunity to examine current topics in science with an expert in the field
- Co-sponsored by the Masonville branch of the London Public Library

Medicine & Music, March 2007

- A lecture and discussion series co-sponsored with the Don Wright Faculty of Music
- The public discusses selected musicians and musical concepts with both a music historian and a physician

Physicians in Fiction, May 2007

- A book club and discussion group examining medical-themed novels with an English professor and a physician
- Co-sponsored with the Department of English and the Westmount branch of the London Public Library

Key Program Statistics

- Offered four series of community programs in 2006-07, Mini Med, Café Scientifique, Medicine & Music, and Physicians in Fiction
- Total enrolment in the community programs was 945

Educational Research & Resources

Community Outreach

Recognition of Faculty, Staff and Students

- “Medicine & Music” won the silver medal from the Canadian Council for Advancement in Education
- A Community Grant was received from Pfizer to help run Mini Medical School



Dr. Jim Silcox

Faculty Outreach Advisor

- Program planning and instructor recruitment



Catherine Blake

Manager

- Program planning, implementation and evaluation



Kay Hickey

Administrative Coordinator

- Registration, promotion and marketing
- Instructional support

For further information, please contact the Faculty, Staff & Community Development Office at 519-661-2074 ext. 86807 or e-mail community.programs@schulich.uwo.ca

Program Overview

The e-Learning Unit's mandate is to:

- explain and facilitate opportunities for technology to support good instructional practice
- guide good design in the use of educational technology in teaching
- provide leadership and direction in the effective use of technologies
- develop alternative teaching and learning methodologies
- encourage consultation with instructors and students
- enable training and support to faculty, staff and students in instructional technology

Past Year's Accomplishments

- A new version of WebCT called OWL – Online Western Learning – is being used for all medical curriculum materials; a new site with all four years of medical students and instructors will be in place by September 2007
- Schulich has taken a lead in ensuring the availability of web conferencing software on campus. “Live Classroom” (Wimba) will be available on OWL in September 2008 for Schulich teaching and web meetings
- The development of “just-in-time” online learning modules has been facilitated by the introduction of Articulate Presenter software
- Members of e-Learning provided a variety of workshops / training sessions throughout the year

Accreditation

- The e-Learning unit contributed to the collection of data and provided information on educational technology initiatives for both the UME and PGE accreditations

Key Program Statistics

- Presented seven workshops / training session in the 2006-2007 academic year
- Provide e-Learning support for 18 UME courses in the pre-clerkship curriculum
- Ensured all training materials for the third-year clerkship available online



Dr. Peter Flanagan
Director

- Strategic planning, faculty liaison



Susan Barschel
WebCT Support

- WebCT Instructional Support
- WebCT design and implementation



Deanna Grogan
WebCT Support

- WebCT Instructional Support
- WebCT design and implementation



Weikai Huang
Web Designer

- Clerkship teaching materials

For further information, please contact the e-Learning unit at 519-661-2111 ext. 86807 or e-mail weikai.huang@schulich.uwo.ca

Educational Research & Resources

Educational Evaluation



Program Overview

- Educational Evaluation is a unit within Educational Research and Resources established in September 2005 to develop and facilitate program evaluation at the Schulich School of Medicine & Dentistry
- The goals of Educational Evaluation are to:
 - Develop and facilitate an ongoing program evaluation of our educational offerings
 - Assess and evaluate instructional methods
 - Ensure student assessment methods are aligned with session, course, and curricular goals and objectives
 - Ensure equivalency between distributed and on-campus learning experiences

Past Year's Accomplishments

- Development and facilitation of a comprehensive curriculum program evaluation plan for Undergraduate Medical Education (Year 1, Year 2 and Transition Period, including Community Health and Clinical Methods)
- Development, population, and maintenance of the SWOMEN database to track participation in all SWOMEN related initiatives
- Development of an online survey tool to measure/ensure the equivalency of learning experiences at London and Windsor Clerkship sites
- Development of a methodology for analyzing AAMC Graduation Surveys; analysis of the Schulich Survey/Canada survey for the past three academic years
- Various other evaluation projects related to the education enterprise at the Schulich School of Medicine & Dentistry

Accreditation

- Various data collection initiatives and analysis of data
- Development of the UME program evaluation plan
- AAMC survey analysis
- Windsor Expansion Update for Accreditation database

Key Program Statistics

Surveys:

- Year 1 Program Evaluation – Nine course surveys distributed to entire Year 1 class
- Year 2 Program Evaluation – Course surveys distributed to entire Year 2 class in collaboration with BCOE
- Year Three (Clerkship) Program Evaluation – Program Equivalency survey distributed to entire Year 3 class
- SRPC Conference – distributed to all SWOMEN sponsored Schulich participants in this conference over the last five years



Jacqueline Wickett
Education Evaluation Assistant

- Assist Educational Evaluation Specialist with ongoing evaluative initiatives
- Assess and evaluate the teaching and testing in the medical and dental programs
- Evaluate the curricula; review the outcomes of evaluation/research projects



Matt Wannan
Educational Evaluation Specialist

- Designs and develops ongoing evaluative initiatives
- Collaborates with other units within the Education Office assessing and evaluating the teaching and testing in the medical and dental programs
- Evaluates the curricula, oversees the outcomes of research projects
- Assesses the implementation and outcomes of programs
- Acts as an information resource for all graduate students seeking research projects relating to the evaluation of Schulich's education offerings

For further information, please contact the Evaluation unit at 519-661-2111 ext. 86215 or e-mail matt.wannan@schulich.uwo.ca

Program Overview

The Faculty & Staff Development Office was established in 1999 with the mandate to:

- Organize workshops and programs to enhance skills in teaching, research, and administration
- Work with individual teachers to assist with course planning, design, and evaluation
- Provide courses that are free for target group members (faculty, residents, fellows, staff and graduate students from the Schulich School of Medicine & Dentistry)
- The Valberg Educational Resource Centre is a 24-hour swipe access facility for faculty members, and medical, dental, and nursing students. The Centre includes a computer classroom, an information desk, books, group study tables, videos, DVDs, two preview rooms, 80 computers, seven laptop ports, Western Wireless Network, four laser printers, and a scanner

Past Year's Accomplishments

- There were two major initiatives in leadership development in 2006-07:
 - Brought levels III and IV of the Physician Management Institute from the Canadian Medical Association to Schulich Medicine; both modules filled to capacity
 - Brought in a two-day custom designed program for emerging leaders in Schulich Medicine from the Richard Ivey School of Business which was well received and filled to capacity
- Offered workshops, in cooperation with the Associate Dean of Graduate Studies, to mentor graduate students and to develop effective graduate student applications for NSERC, HSF, and OGS funding
- Continued co-sponsorship with Robarts, Lawson and the Schulich Research Office and offered nine research-building workshops
- Offered a fall teaching retreat in Leamington to support SWOMEN faculty
- Delivered customized workshops for the CPSO

Accreditation

- Contributed to the collection of data and provided information on faculty development initiatives for both accreditations



Catherine Blake
Manager

- Program development, implementation, evaluation, and management
- Needs assessment, instructor recruitment, and support of educational grants

Educational Research & Resources Faculty & Staff Development

Key Program Statistics

- Offered 67 workshops in the 2006-2007 academic year
- Enrolment for the 2006-2007 academic year totalled 1,252
- Awards and Grants
 - 14 Mini Fellowships with a total value of \$48,823
 - 10 Instructional Innovation and Development Fund awards for a total of \$49,964
 - Three Faculty Support for Research in Education grants for a total of \$25,000

Recognition of Faculty, Staff and Students

- Four Schulich Awards for Undergraduate Education were given out in 2006-07 and seven for Graduate/Postgraduate Education
- Two faculty members received CAME Certificates of Merit



Kay Hickey

Administrative Coordinator

- Registration, promotion and marketing
- On-site course management and instructional support
- Administrative support for educational grants



Erin Szielasko-Frenette

Valberg Educational Resource Centre

- Resource library services and Information Desk
- Circulation/reference and cataloguing

For further information, please contact the Faculty, Staff & Community Development Office at 519-661-2074 or e-mail facdev@schulich.uwo.ca

Educational Research & Resources Group for the Advocacy & Advancement of Medical/Dental Education Scholarship

Program Overview

- Founded in 2004, the mission of the Group for the Advocacy & Advancement of Medical/Dental Education Scholarship (GAMES) is to support education scholarship by Schulich Medicine & Dentistry faculty
- Current membership is 161 faculty members consisting of basic science educators, dental faculty and residents; members have access to free consultative services, scholarly activities, and receive regular notices of upcoming conferences and funding opportunities

Past Year's Accomplishments

- Hosted the first annual "*GAMES Education Symposium*;" Dr. Georges Bordage delivered the Symposium's keynote lecture in addition to a workshop on writing for scientific publication
- Hosted four education rounds involving invited lectures from experts in education; highlights included sessions by Robby Reynolds (MedEdPORTAL) and Lorelei Lingard (Role of the PhD Education Researcher)
- Created a "*GAMES Scholars Group*" which meets to discuss education research ideas along with other topics of interest
- Publication; MA Goldszmidt, C Kortas, S Meehan (2007). S: Advanced medical communications: Support for our international residents. Med Educ 41(5): 522.

Key Program Statistics

- Supervised research projects by one resident and two medical students
- Mentored four faculty and was involved in 25 consultations with faculty, fellows and research staff
- One publication and three manuscripts submitted to education-related journals
- Seven presentations; locally and at AFMC-CAME 2007

Recognition of Faculty, Staff and Students

Wayne Weston

- 2007 Certificate of Recognition, Ontario College of Family Physicians
- 2007 Honorary Lifetime Membership, Family Medicine Interest Group, Schulich School of Medicine & Dentistry
- 2006 Instructional Innovation & Development Fund Award

Mark Goldszmidt

- 2007 Dean's Award of Excellence Nominee, Schulich School of Medicine & Dentistry
- AFMC-CAME 2007 Honorable Mention, Best Poster Presentation
- 2006 AFMC GlaxoSmithKline Young Educator Award Nominee



Dr. Mark Goldszmidt
Co-Director of GAMES

- Assistant Professor, Department of Medicine Division of General Internal Medicine



Dr. Wayne Weston
Co-Director of GAMES

- Professor Emeritus, Dept Family Medicine, Consultant to the Dean on Faculty Development



Elaine Zibrowski
Coordinator

- Primary administrator, statistical and research support

For further information, please contact the GAMES group at 519-661-2111 ext. 22143 or e-mail games@schulich.uwo.ca

Southwestern Ontario Medical Education Network



Program Overview

- The Southwestern Ontario Medical Education Network (SWOMEN) is a partnership of over 40 communities throughout Southwestern Ontario including Windsor providing Rural Regional medical education and training experience to undergraduate and postgraduate trainees from the Schulich School of Medicine & Dentistry
- Over 380 University of Western Ontario Faculty Appointed preceptor physicians, located in communities throughout Windsor and Southwestern Ontario, currently provide both core and elective training that meet the educational goals and objectives set out by governing bodies such as the Liaison Committee on Medical Education, Committee on Accreditation of Canadian Medical Schools, The Royal College of Physicians and Surgeons of Canada and the Canadian College of Family Physicians
- Funded by the Ministry of Health and Long-Term Care, province of Ontario, SWOMEN's mandate is to provide medical education outside the traditional academic health sciences centre located in London, Ontario
- Southwestern Ontario, like many areas of Canada, is medically under serviced by physicians; a strategic benefit of high-quality community rotations is that it affords trainees the opportunity to see community practice outside the urban academic setting
- SWOMEN can share many instances where graduates from the Schulich School of Medicine & Dentistry have returned to communities in which they trained to set up permanent practice

Past Year's Accomplishments

Clinical Teaching Unit, Pediatrics - Windsor Regional Hospital, Windsor, Ontario

- Following a two-month pilot project in April and May 2007, the Pediatric CTU at Windsor Regional Hospital is now up and running at full speed
- This project was developed out of a need to provide more resident education outside of London to fulfill SWOMEN requirements while providing an opportunity for residents to learn more about practising pediatrics outside a tertiary centre and hopefully encourage them to consider a career in general pediatrics in a non-tertiary centre
- This initiative provides Family Medicine residents an opportunity to develop skills in caring for children in a hospital setting, including care of well newborns, which they would not receive in an office-based pediatric rotation
- The Pediatric and Family Medicine Residents themselves have provided valuable input into the structure and learning objectives of the unit and their feedback during the pilot project was essential in developing a valuable learning experience for Pediatric Residents, Family Medicine Residents and Clinical Clerks in pediatric in-patient and out-patient care



Jay Orchard

Manager, SWOMEN

- Manages SWOMEN Rural/Regional and Windsor Programs
- Responsible for Faculty Affairs, Student Services, Human Resources, Marketing/Communications
- Oversees Finance, Accounting and Learning Resources



Dr. Kenneth A. Harris

Director, SWOMEN

MedQUEST

- Now in its third year, MedQUEST has become an established component of many communities' long term health human resource planning
- Developed by SWOMEN, the MedQUEST camp concept encourages high school students from Southwestern Ontario to apply in greater numbers to medical school or other health care professions
- The camp is a one-week summer program for Grades 10 and 11 students where local physicians, nurses and medical/nursing students deliver an exciting curriculum; high school students are provided with realistic experiences in the field of medicine using state-of-the-art advanced simulator training, peer workshops and the opportunity to watch physicians/nurses in a clinical setting

Windsor Expansion

- Planning has begun for the four-year MD Degree at the Schulich School of Medicine & Dentistry, Windsor Program beginning in September 2008
- Since 2002, SWOMEN has been coordinating non-credit pre-clerkship, clerkship and 4th year electives with respect to Undergraduate Medical Education in Windsor; over time, a transfer of responsibilities will occur such that SWOMEN will shift responsibility of the undergraduate portfolio to staff in Windsor as the four year program is established
- Windsor will remain an education site for London students based on need and capacity; SWOMEN will continue to provide advice and council during this transition period with an emphasis on Postgraduate Residency Programs, the development of Windsor CaRMs matched positions and continued refinement of existing outcomes

Key Program Statistics

SWOMEN Training Summary Postgraduate Programs 2006-2007		
	Number of Residents	Number of Training Months
2005-2006	117	194.5
2006-2007	155	247.5
% Increase	32%	27%

SWOMEN Training Summary Undergraduate Programs 2006-2007		
	Number of students	Number of Training Months
2005-2006	209	390
2006-2007	197	417
% Increase	-6%	6%

- In 2007 SWOMEN celebrates its tenth anniversary in the provisioning of rural regional medical training and research; training now occurs in over 40 community hospitals and clinics throughout Southwestern Ontario
- Training months are an important performance indicator for SWOMEN as they demonstrate the length of time trainees spend in the community

Southwestern Ontario Medical Education Network



Windsor and Rural Regional Rotations (1998-2007) Completed by Schulich Graduates

SPECIALTY	Region Now Practicing In								TOTAL
	Windsor-Essex	Elgin	Grey- Bruce	Chatham-Kent	Huron-Perth	Middlesex	Oxford	Sarnia-Lambton	
Anaesthesia	1			1	1				3
Paediatrics		1	1						2
General Surgery	1	1		1	2				5
Internal Medicine	3						1		4
Obstetrics- Gynecology	1	3							4
Family Medicine	10	4	5	4	4	5	7	1	40
Emergency Medicine	5	9	1	1	4		1	2	23
Psychiatry	1			1	1				3
Pathology			1		1				2
GRAND TOTAL # GRADUATES	22	18	8	8	13	5	9	3	86

Recognition of Faculty, Staff and Students

- Dr. Tom Lacroix and Kathy Wallis (Media Relations) won a Canadian Council for the Advancement of Education (CCAE) PRIX D'EXCELLENCE Gold Award in the best community outreach program category for MedQUEST
- Dr. Tom Lacroix won a Mini Fellowship Award to Develop Online Community-Based Preceptor Faculty Development Tools in cooperation with medical schools in Chapel Hill and Asheville, North Carolina
- Dr. Joshua Polsky won a Mini Fellowship Award to study Advanced Laparoscopic Techniques
- Dr. Donald Levy won a Mini Fellowship to attend the American College of Emergency Physicians Teaching Fellowship Program
- Dr. Tony Mariano won a Mini Fellowship to attend the American College of Emergency Physicians Teaching Fellowship Program



Laurie Roberts

Community Development Officer

- Assists hospitals communities and clinics with physician recruitment and retention initiatives
- Works directly with International Medical Graduate Ontario (IMGO) with respect to Return of Service Placements
- Assists physicians and their families with seeking practice opportunities in Southwestern Ontario



Tom Scott

Associate Dean, Windsor Program



Dr. Tom Lacroix

Assistant Dean, SWOMEN Rural/
Regional



Dr. Raphael Cheung

Assistant Dean, SWOMEN Windsor

Southwestern Ontario Medical Education Network



Rural Regional Staff

Back Row, Kathy VanDinther, Charlotte Sikatori

Front Row: Mary Peterson, Brenda Hennessey

Absent: Kanska El-Sayegh

Brenda Hennessey

Administrative Coordinator

- Financials, Preceptor and Academic Director Remuneration
- Administers Faculty Appointment Process
- Administrative support for Associate Director, Education and Manager, SWOMEN

Charlotte Sikatori

Program Coordinator

- Coordinates the Postgraduate Rural/Regional program
- Support for Assistant Dean Rural/Regional and Rural/Regional Academic Directors
- SWOMEN Webmaster, Newsletter

Kathy VanDinther

MedQUEST Coordinator

- Overall coordination of MedQUEST, community liaison, communications and reporting

Kanska El-Sayegh

Administrative Assistant, CDO Program

- Provides administrative support to the Community Development Program
- Education Assistant to SWOMEN Undergraduate and Postgraduate programs
- Assists with the administration/coordination of MedQUEST
- CDO website webmaster

Mary Peterson

Rural/Regional Coordinator

- Overall coordination of Rural/Regional activities in the Undergraduate Medical Education program

Southwestern Ontario Medical Education Network



Windsor Staff

From Left to right, Kelly Ducharme, Linda Wright, Ann Sovan, Beverly Nichols, Jeanne Hickey Absent: Sharon Keech

Ann Sovan

Program Coordinator

- Oversees the administration of the SWOMEN Windsor office
- Key contact for administrative program issues as they relate to the Windsor Program

Linda Wright

Administrative Assistant

- Provides administrative support (point of first contact) for the SWOMEN Windsor office
- Room bookings, catering, meeting setup and minute taking
- Assists in preparation for clerk and resident rotations in the Department of Family Medicine and Obstetrics and Gynecology

Beverly Nichols

Education Coordinator

- Overall administration of the Programs of Surgery and Paediatrics in regards to clerks and resident medical training
- Education Coordinator to the Academic Directors of Surgery and Paediatrics
- Liaison between Windsor Program and Schulich's departments of Surgery and Paediatrics and hospital staff at Windsor Regional Hospital Met Campus

Jeanne Hickey

Education Coordinator

- Overall administration of the Internal Medicine CTU in regards to clerk and resident medical training
- Education Coordinator to the Academic Director, Internal Medicine and Windsor faculty
- Liaison between the Windsor Program and Schulich's department of Psychiatry and hospital staff at Hotel Dieu Grace Hospital

Kelly Ducharme

Education Coordinator

- Overall administration of the Psychiatry Program and the Paeds/Family Medicine CTU in regards to clerk and resident medical training
- Education Coordinator to the Academic Directors Psychiatry, Paediatrics and Family Medicine Programs
- Liaison between Windsor Program, Paediatrics and Family Medicine Programs at Windsor Regional Hospital (Metropolitan Campus), Psychiatry Program at Windsor Regional Hospital (Western Campus) and Schulich's departments of Psychiatry, Paediatrics and Family Medicine

Sharon Keech

Property Manager

- Overall management of trainee housing accommodations

For further information, please contact the SWOMEN London office at 519-661-2111 ext. 86326 or e-mail jay.orchard@schulich.uwo.ca