



Schulich

MEDICINE & DENTISTRY

# Joint Clinical Research Centre, Mulago Hospital, St. Jude's Kampala and Masaka, Uganda

Danit Freedman,  
Suna Jung,  
Avalon O'Connor,  
Crystal Leung,  
Amanda Stojcevski



# Background - JCRC

- A not for profit, NGO established in 1991 to address national HIV/AIDS challenge
- Specializes in HIV/AIDS care, research and training
- The first centre to provide antiretroviral drugs in the country
- Adult clinic, pediatric clinic, wards, private clinic, cardiology, radiology, TB clinic, dental clinic, laboratory



# Background - Mulago Hospital

- The main “national referral” hospital in Uganda
- Considered to be a public hospital
- Downtown Kampala, connected to Makerere University (i.e. the main teaching hospital for the medical school)
- Other sites associated (i.e. Kirudu, Kawempe)



# Background - St. Jude

- A non-profit organization based in Busense village, near Masaka, Uganda
- Mainly an agricultural organization
  - Teaching effective and efficient agriculture techniques to the community
- Expanding to include a health education program



# Daily Routine - JCRC

Ward  
Rounds



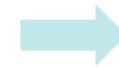
Clinic



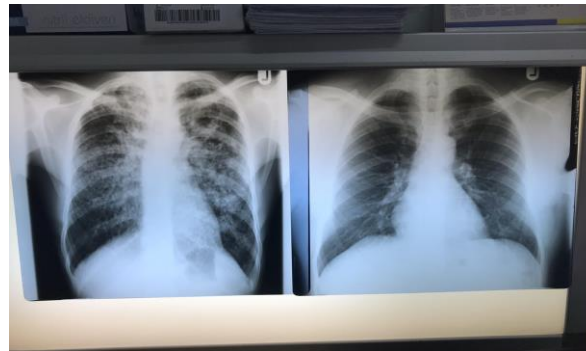
Lunch



Clinic  
Reading/  
Discussion



Free  
Evening



# Daily Routine - Mulago Hospital

- Uber Commute
- Rounds in morning
- Help Interns in afternoon
  - Collecting samples
  - Arranging investigations
- Practice Humanity Project
  - Identify patients who can't afford (or respond to messages from interns)
  - purchase meds, take patients for imaging, etc
- Fun time!



# Daily Routine - St. Jude's

- “Healthy Communities Project”
  - Health education program for the rural communities surrounding Masaka
- Daily routine included:
  - Researching topics and developing lesson plans for our classes
  - Teaching lessons throughout the community
- Each day consisted of a few hours of teaching and a few hours of research and lesson planning once we returned to St. Jude's





# Rotation

- Amanda (Mulago Hospital)
  - Pediatric wards (hematology, cardiac/resp, infection, nephro/neuro, malnutrition)
  - Cases: Sickle cell, congenital heart defects, TB, opportunistic infections, malaria, measles, malnutrition
- Avalon, Crystal, Suna (JCRC)
  - Week 1: orientation and schedule
  - Week 2: adult outpatient clinic, cardiology
  - Week 3: pediatric outpatient clinic, mother-infant clinic, Px
  - Week 4: TB clinic, radiology, laboratory
  - Cases: HIV/AIDS, TB, opportunistic infections (cryptococcus, toxoplasmosis)
  - Community outreach/field work opportunities
  - Interaction with nurses, counsellors, youth peer counsellors, community liaison volunteers (expert patients)

# Leisure Time

- Explored restaurants!
- Cultural dance show!
- Free walking tour!
- Cooking tour!
- Reggae Mondays!
- Afro-swing classes!
- White water rafting!
- Beach!
- SAFARI!



# Highlight(s) of Your Experience

- Avalon, Crystal, Suna (JCRC)
  - The people
  - Interaction with patients and getting a glimpse of their experience
- Amanda (Mulago)
  - Meeting new people
  - exposure to a new culture (uber chats!),
  - Practice Humanity initiative (giving back)
- Danit (St. Jude's)
  - The people
  - Cultural integration
  - Naming ceremony
  - Trying to make North American foods - like cheese!
  - Actually getting to make a difference



# What You Learned From the Elective

- Amanda (Mulago) / Avalon, Crystal, Suna (JCRC)
  - What medicine looks like in low resource setting,
  - Medical issues we don't see in Canada
  - How to be assertive / take charge of learning
- Danit (St. Jude's)
  - Differences in healthcare access and knowledge
    - less technology available than in North America
  - How to convey medical info to the general population

# Challenge(s)

- The uncertainty going in
- Some issues with language barrier, but often not an issue
- Occasional “discomfort” with cultural differences
- Commute (Amanda)

# Memorable Moment(s)

- When we almost died



# Photos from Your Trip





Western  
UNIVERSITY • CANADA