



# Honours Specialization in Interdisciplinary Medical Sciences (IMS)

Bachelor of Medical Sciences Program

Monday, June 20, 2022  
Information Session

# BMSc Program

Honours Specializations

Double  
Majors

Thesis

Non-thesis

Departments and  
other programs

Interdisciplinary  
Medical Sciences

YOU ARE HERE



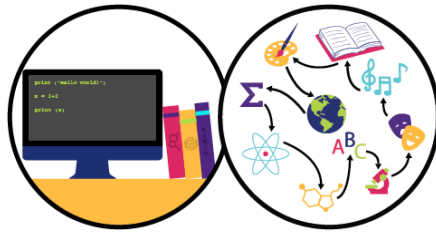
# Important Links

- [Academic Calendar](#)
- [Timetable](#)
- [HSP IMS Website](#)
  - [Plan Your Courses](#)
  - [Register for Courses](#)
  - [Access to Courses](#)
  - [Condensed Course Outlines](#)

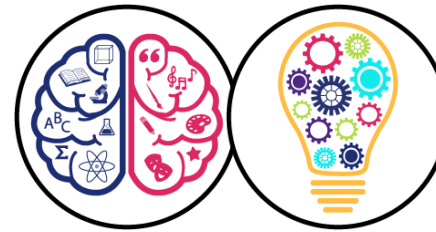
# Western Degree Outcomes



Knowledge



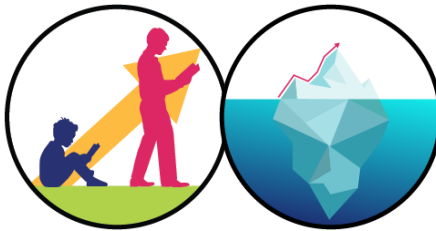
Literacy and  
Interdisciplinarity



Critical and  
Creative Thinking



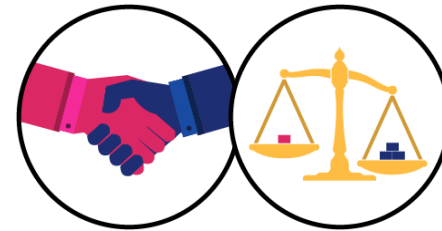
Communication



Resilience and  
Lifelong Learning



Global and Community  
Engagement



Professionalism and  
Ethical Conduct

# Year 4 HSP IMS Program

**\*\*NEW This Year\*\***

## MEDSCIEN Capstone Courses (mandatory)

- 0.5 4930F
- 1.0 4990E (lab) OR 1.0 4995E (CEL)
- 0.5 4200B

## Other Courses (mandatory)

- + 1.0 from other basic science disciplines

## MEDSCIEN Courses (optional)

- 0.5 4100G

# Course Formats

- **Blended** courses have both face-to-face and online instruction. These course offerings are clearly identified by designated section numbers in the undergraduate academic calendar and lecture timetable. In the identified blended courses, at least 30% of student learning integral to the course occurs in the online interactive learning environment.
- **Hyflex** modality refers to course delivery that was offered in-person and online at the same time. This may or may not be an option in the upcoming year. This was implemented in response to the pandemic.

# Additional Requirements

- Outstanding module/group requirements
- Breadth requirements
- Minimum of 13.0 senior level courses
- [Worksheet](#) for graduation requirements (needs to be updated to reflect recent changes)

# Learning Outcomes

## 4990E

- **Skillfully** and safely perform a wide range of **laboratory skills** and techniques.
- Clearly and concisely record, summarize, analyze, and interpret **results from an experiment**.
- Construct and deliver well-organized, and logical information making use of appropriate delivery techniques to **communicate** scientific knowledge to the target audience.
- **Collaborate** effectively by demonstrating respect for others, respect for different points of view, beliefs, and values, and taking on leadership, where appropriate.
- Evaluate relevant real-world scenarios and/or problems by **integrating perspectives** from medical science disciplines to make informed decisions.

## 4995E

- Create a professional, practical, and **evidence-based deliverable** to promote health initiatives in the greater London community.
- Articulate the **intersectionality** between pathophysiological, epidemiological, biochemical factors, and **social determinants** to investigate the basis of conditions such as addiction, poverty, psychosis, and homelessness.
- Effectively **communicate** scientific and health literature to a broad audience, including non-experts, community partners, and peers.
- **Collaborate** effectively by demonstrating respect for others, respect for different points of view, beliefs, and values, and taking on leadership, where appropriate.



# Course Schedule

4990E (lab)

4995E (CEL)

**Shared Lectures** Mondays 1:30 to 2:30

## Laboratories

Tuesdays 9:30 to 1:30

Wednesdays 9:30 to 1:30

## Tutorials

Tuesdays and Thursdays  
9:30 to 11:30

Tuesdays and Thursdays  
11:30 to 1:30

# Course Registration

- Let's talk logistics! What do you need to know in advance of your course registration?
  - [Plan Your Courses](#)
  - [Register for Courses](#)
    - Prerequisites
    - Priorities and Restrictions
    - Constraints ([Access to Courses](#))

# Questions

Course Registration: July 4

If you get *stuck* on course registration day, please contact Jennifer Chambers and Dr. Campbell in the same email

