

SCHULICH SCHOOL OF  
MEDICINE & DENTISTRY  
WESTERN UNIVERSITY

ISSUE DATE:  
MARCH 2026

# DEAN'S REPORT

## ANNUAL REVIEW FOR 2025



All in.

# CONTENTS



## A MESSAGE FROM DEAN JOHN YOO



### DRIVING DISCOVERY AND INNOVATION

2025 was not only a banner year for research funding, with more than \$182.9 million generated, but also a year of sustained investment in the people and infrastructure that drive innovation forward.

Construction is underway on the School's new Pathogen Research Centre, strengthening our leadership in the understanding, prevention and treatment of infectious diseases. At the same time, the University is advancing plans for the Western Bioconvergence Centre, a once-in-a-generation initiative poised to transform health research and medical education.

### ROOTED IN OUR REGION

Serving the health needs of our region is a core responsibility of our School. We continue to build pathways and partnerships that enable us to educate future physicians and dentists where they are needed most. As just one example, this fall marked the launch of our Sarnia Clerkship program, offering learners the opportunity to complete their full, immersive clerkship training at Bluewater Health.

### STRONGER TOGETHER

In 2025, we joined hands with our alumni, our hospital network and broader community to advance initiatives that will secure the School's continued success. From endowed research chairs to innovative educational programs and critical investments in infrastructure, our progress would not be possible without our supporters, partners and collaborators. With Western's historic *All in* Campaign now underway, we are coming together to think bigger, act bolder and build a better future.

As I enter my second term as dean, I am deeply grateful to serve a community defined by dedication, collaboration and a shared commitment to purpose. I hope this report leaves you with the same sense of optimism that guides my work each day, grounded in what we have achieved together and confident in what lies ahead.

Sincerely,

John Yoo, MD, FRCS(C), FACS  
 Dean, Schulich School of Medicine & Dentistry  
 Western University

**2025** was a year marked by bold progress and renewed possibility at the Schulich School of Medicine & Dentistry.

As we approach the final chapter of our five-year Strategic Plan, our School continues to advance education, accelerate discovery and deepen our impact across our region and beyond, while investing thoughtfully in solutions to tomorrow's health challenges.

### EDUCATION THAT LEADS

Preparing the next generation of health-care leaders remains at the heart of our mission. We continue to explore new approaches to learning through innovative programming and immersive educational experiences.

This year, in collaboration with the Faculty of Health Sciences, we are launching a new Bachelor of Science Honours Specialization in Public Health. One of only a few of its kind in Canada, it will ready tomorrow's public health practitioners with high-calibre training in biomedical science, epidemiology, statistics, environmental health, policy and ethics.

A MESSAGE FROM DEAN JOHN YOO	03
2025 AT A GLANCE	04
EDUCATIONAL EXCELLENCE	06
RESEARCH IMPACT	20
SOCIAL ACCOUNTABILITY	26
PEOPLE	28
PARTNERSHIPS	36
SUPPORTING OUR LEARNERS	40

# 2025 at a glance

A record-breaking year for research that is changing lives

**\$182.9M**  
in research funding

## OUR PEOPLE, OUR STRENGTH



**4,097** Learners



**3,097** Faculty

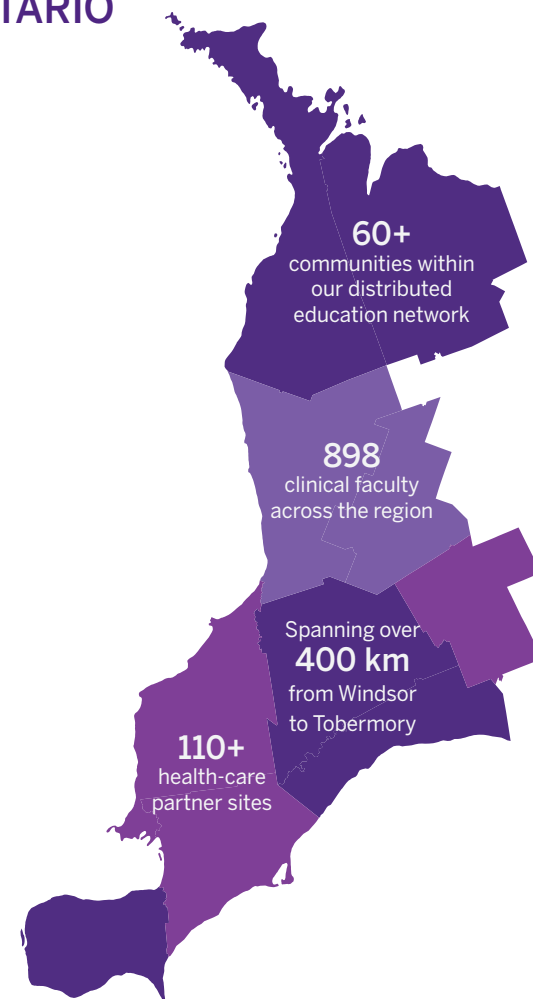


**1,310** Staff



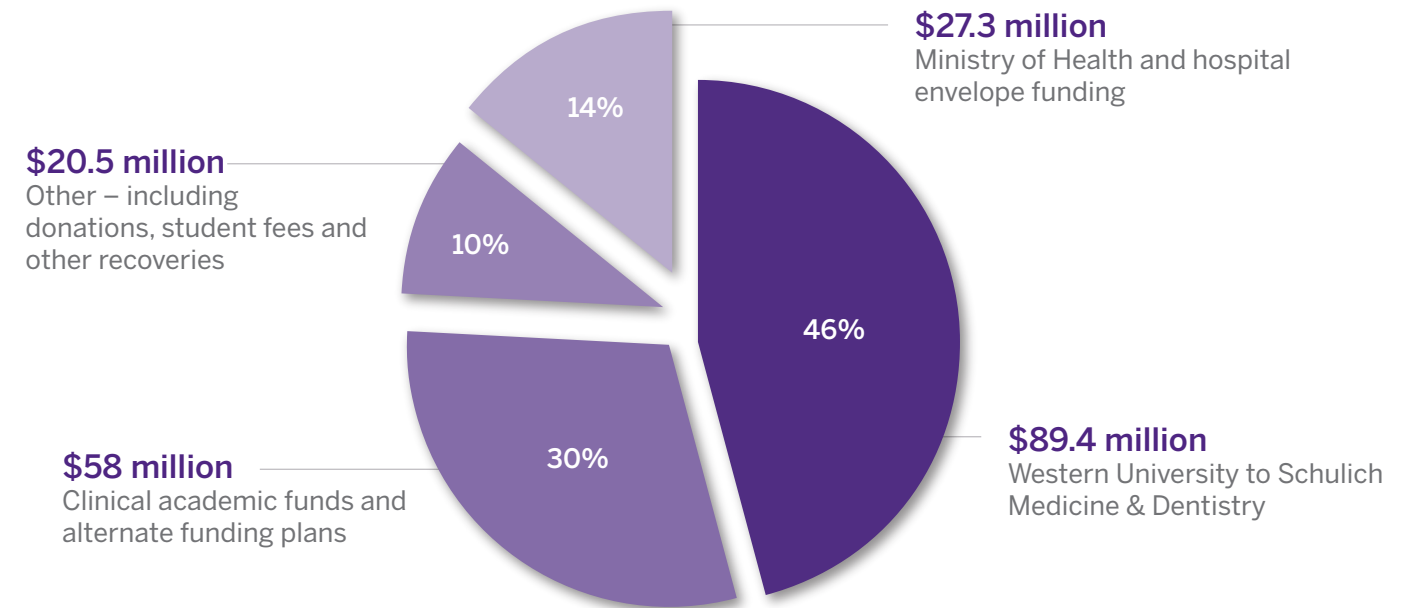
**23,000+** Alumni across the world

## SERVING SOUTHWESTERN ONTARIO



## OPERATING REVENUE

**\$195.2M**



## TWO CAMPUSES, ONE VISION



**1,069,260 sq ft**

total square footage across London and Windsor campuses

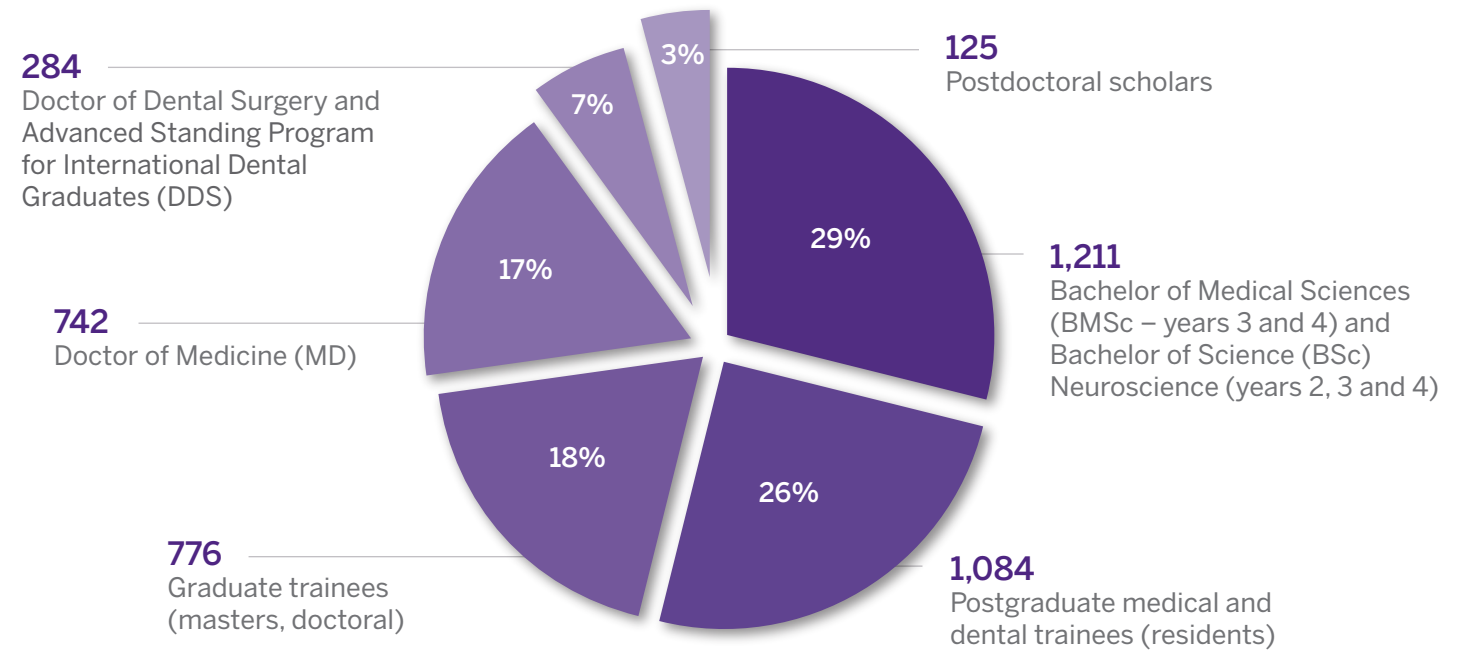
Western University campus ..... 956,859 sq ft  
University of Windsor campus ..... 112,401 sq ft

We combine high-impact research with immersive learning experiences in a premier health network to improve human health

# EDUCATIONAL EXCELLENCE



## MORE THAN 4,000 LEARNERS ACROSS TWO CAMPUSES



## SHAPING FUTURE PUBLIC HEALTH LEADERS

As infectious diseases resurface, climate-related emergencies intensify and trust in science is increasingly tested, public health is now at the centre of some of society's most consequential decisions. Against that backdrop, Western University is launching a new undergraduate program in the field.

One of only a handful of undergraduate public health programs in Canada, the program – developed collaboratively between Schulich Medicine & Dentistry and the Faculty of Health Sciences – brings together training in biomedical science, epidemiology, statistics, environmental health, policy and ethics.

“Students need an understanding that stretches from cells to society, and the undergraduate program is designed to give them that comprehensive foundation,” said Cheryl Currie, PhD, professor and director of the School's Interfaculty Program in Public Health.



## PROGRAM OFFERINGS

### Undergraduate Programs

Bachelor of Medical Sciences (BMSc)

Bachelor of Science Honours Specialization in Public Health

Bachelor of Science (BSc) – Neuroscience

### Undergraduate Dual Degree Programs

Bachelor of Medical Sciences/Honours Business Administration (BMSc/HBA) (joint with Ivey Business School, Western University)

### Professional Programs

Advanced Standing Program for International Dental Graduates\*\* (DDS-ASP)

Doctor of Dental Surgery (DDS)

Doctor of Medicine (MD)

### Thesis-Based Graduate Programs (MSc and PhD)

#### Basic Science Departments:

- Anatomy and Cell Biology
- Biochemistry
- Epidemiology and Biostatistics
- Medical Biophysics (including PhD with CAMPEP\* certification)
- Microbiology and Immunology
- Pathology and Laboratory Medicine
- Physiology and Pharmacology

#### Interdisciplinary Thesis-Based Programs:

- Neuroscience

#### Collaborative Specializations (available to graduate students in thesis-based programs):

- Developmental Biology
- Machine Learning in Health and Biomedical Sciences
- Molecular Imaging
- Musculoskeletal Health Research
- Music Cognition
- Scientific Computing

### Professional Course-Based Graduate Programs

#### MSc Programs:

- Clinical Medical Biophysics (CAMPEP\* accredited course)
- Drug Safety and Pharmacovigilance (launched in 2024)
- Medical Sciences

#### Other Professional Degrees:

- Master of Health Science (MHSc) in Global Health Systems (joint with Faculty of Health Sciences, Western University)
- Master of Public Health (MPH)
- Pathologists' Assistant Program (MCISc)
- Pathology and Laboratory Medicine (G.Dip)

### Professional Development

Continuing Dental Education

Continuing Medical Education

Faculty Development

### Postgraduate and Clinical Graduate Programs

#### Medicine (PGME)

238 Clinical Fellowship offerings

9 Areas of Focused Competence programs

50 Clinical Residency programs

- Anesthesiology
- Cardiac Surgery
- Cardiology
- Child and Adolescent Psychiatry
- Clinical Immunology and Allergy
- Clinical Pharmacology and Toxicology
- Clinician Investigator Program
- Critical Care Medicine
- Diagnostic and Molecular Pathology
- Diagnostic Radiology
- Emergency Medicine
- Endocrinology and Metabolism
- Family Medicine
- Family Medicine/Emergency Medicine
- Family Medicine Enhanced Skills
- Gastroenterology
- General Internal Medicine
- General Surgery
- Geriatric Medicine
- Geriatric Psychiatry
- Gynecologic Reproductive Endocrinology
- Hematology
- Infectious Diseases
- Internal Medicine
- Interventional Radiology
- Maternal-Fetal Medicine
- Medical Oncology
- Neonatal-Perinatal Medicine
- Nephrology
- Neurology
- Neuropathology
- Neurosurgery
- Nuclear Medicine
- Obstetrics and Gynecology
- Ophthalmology
- Orthopedic Surgery
- Otolaryngology – Head and Neck Surgery
- Paediatrics
- Paediatric Critical Care Medicine
- Paediatric Emergency Medicine
- Pain Medicine
- Physical Medicine and Rehabilitation
- Plastic Surgery
- Psychiatry
- Radiation Oncology
- Respiriology
- Rheumatology
- Thoracic Surgery
- Urology
- Vascular Surgery

#### Dentistry (Graduate and Postgraduate Clinical Education)

- General Practice residency
- Graduate Orthodontics
- Oral and Maxillofacial Surgery

#### Clinical Thesis-Based Graduate Programs (for clinicians):

- Surgery (MSc)
- Orthodontics (MCID)
- Family Medicine (MCISc and PhD)

### Dual Degree Programs

Dental Clinician Scientist (DDS/PhD)

MD/MSc in Oral and Maxillofacial Surgery

MD/PhD

MD+ track

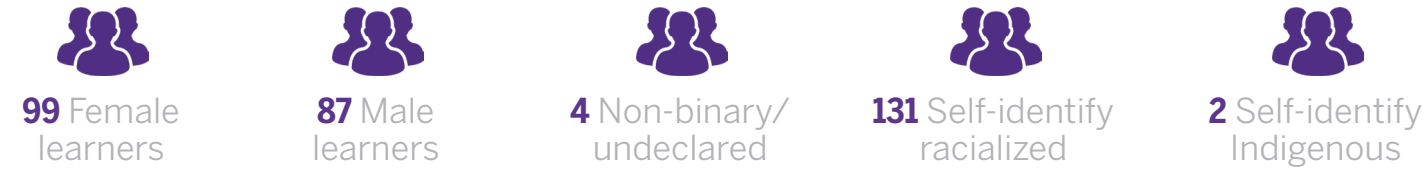
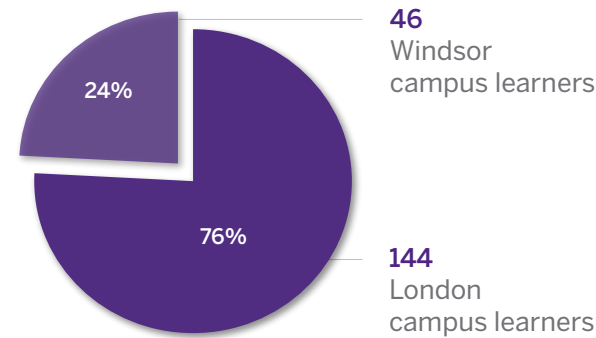
\*CAMPEP (Commission on the Accreditation of Medical Physics Educational Programs)

\*\*Formerly called the Internationally Trained Dentists (ITD) program

# Doctor of Medicine (MD)

**190**  
INCOMING MD LEARNERS

All first-year MD seats filled for the academic year



“ I’ve come to truly understand the importance of human connection. As a trainee, it’s easy to focus on textbooks and lectures, learning about diseases and health-care systems abstractly. But experiencing it firsthand with patients is something entirely different.

Patients meet us at some of their most vulnerable moments. There’s a profound sense of trust that patients place in their physicians, something that feels almost sacred. Behind every procedure or visit is a person with a family and community waiting for them. That trust is both humbling and motivating.”

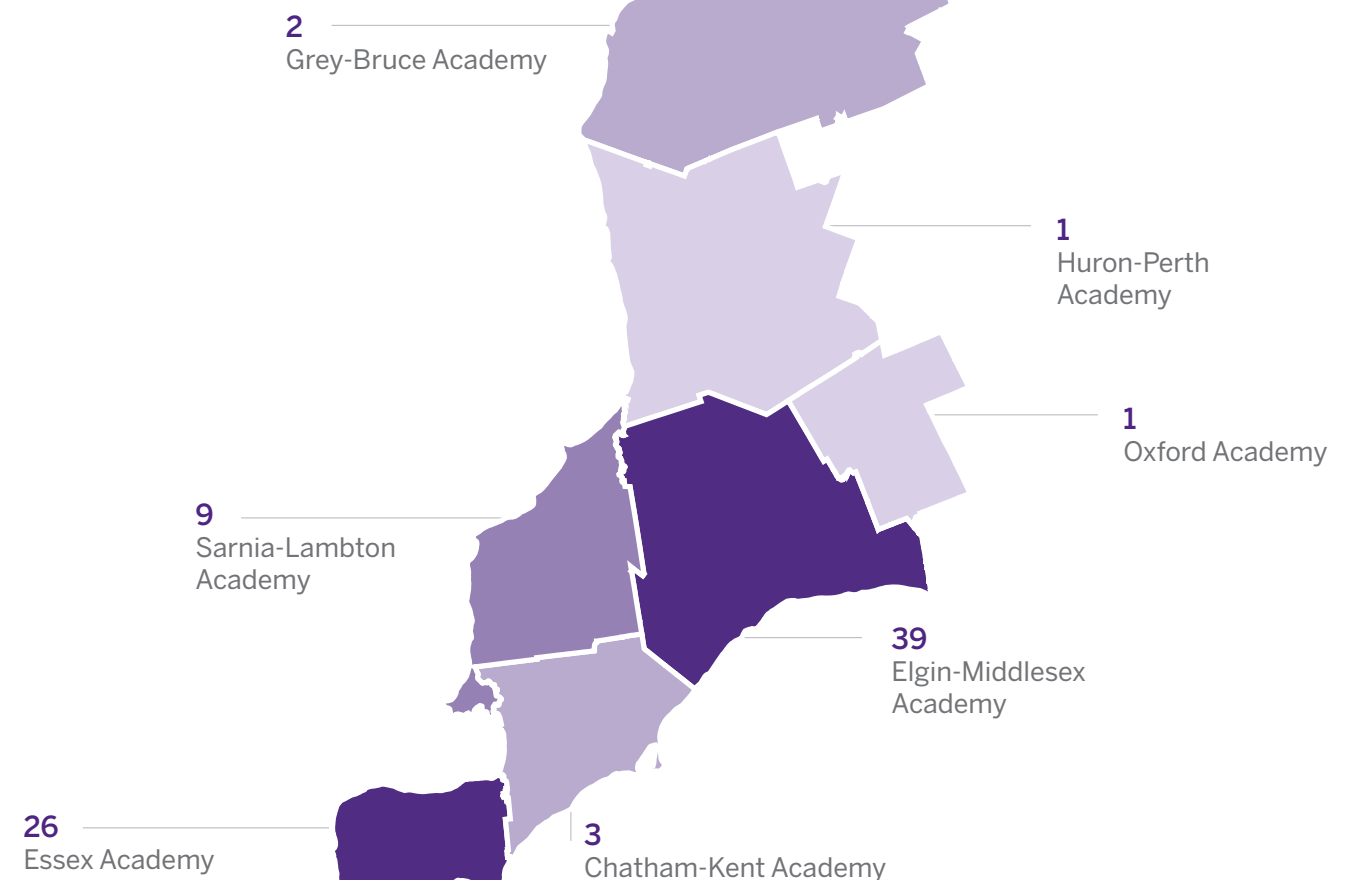
*Benson Law,  
MD Candidate  
Canadian Armed Forces reservist  
and recipient of the Canadian  
Medical Hall of Fame Award for Medical Students*



## Educating the future physicians of Southwestern Ontario

43% of the MD Class of 2029 hail from Southwestern Ontario

**81**  
applicants from  
Southwestern Ontario  
accepted to the program



# MD+ Program

MD+ is a one-of-a-kind interdisciplinary track that enables MD program learners to pursue graduate degrees or diplomas in a wide range of fields. Learners can enrol in programs either on campus or abroad alongside their medical degree, providing them with time, financial and academic support. The program was launched in 2021.

MD + program enrolment in 2025

1

learner newly enrolled in fall 2025

2

learners currently enrolled

4

learners who have completed program

# MD/PhD Program

The combined MD/PhD program offers an opportunity to integrate clinical practice with research. The program enables MD learners to embark on groundbreaking research, working alongside leading scientists at the School and its affiliated research institutes.

MD/PhD program enrolment in 2025

27

currently enrolled

39

Total learners who have completed the program since 2007



# Postgraduate Medical Education

1,238  
TOTAL ENROLMENT

for academic term July 1, 2025 to June 30, 2026

## A GLOBAL NETWORK ROOTED IN COMMUNITY-DRIVEN HEALTH CARE



In 2025, the School welcomed a record 133 new clinical fellows, as well as more than 200 new residents who began their postgraduate medical training at Schulich Medicine & Dentistry.

The incoming and continuing trainees join a global network of medical professionals coming from universities across Canada and around the world.

In 2025, all residency positions across 50 clinical programs were filled, with incoming residents now training and gaining hands-on experience in hospitals and clinics in:



London



Windsor



Regional  
Southwestern Ontario

Delivering clinical training through strong partnerships with local and regional health-care providers

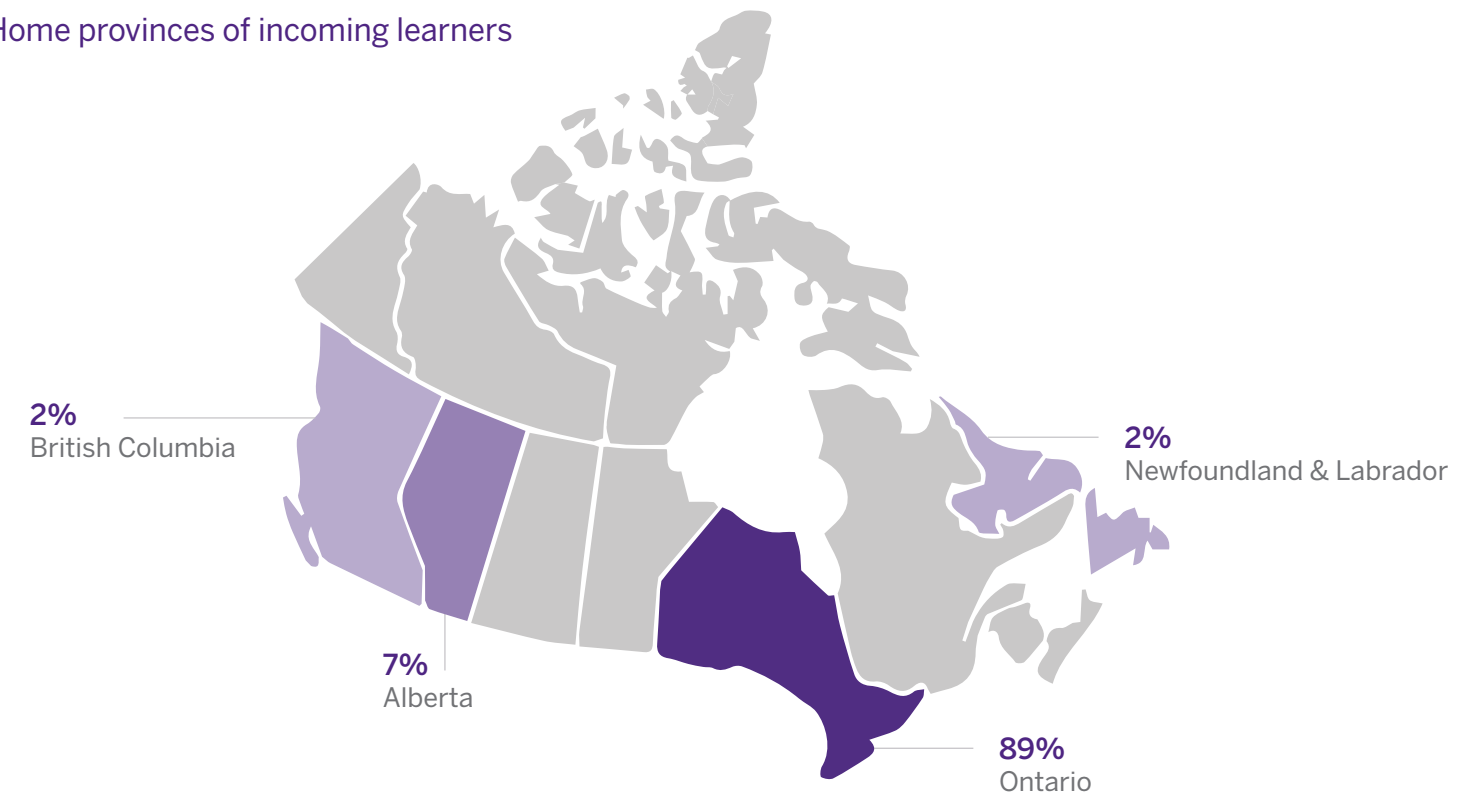
# Doctor of Dental Surgery (DDS)

**56**  
INCOMING DDS LEARNERS

All first-year DDS seats filled for the academic year



Home provinces of incoming learners



Having joined Schulich Dentistry in 2025, Mariam Park is approaching dentistry from a public health perspective, with a focus on addressing inequities in access to care.

She first saw the power of dentistry working as a dental receptionist, helping patients navigate the system by translating documents for newcomers and guiding families through financial support programs.

“The sense of belonging to such a supportive and passionate community feels incredibly motivating, which reaffirms my commitment to be of service as a dentist,” said Park.

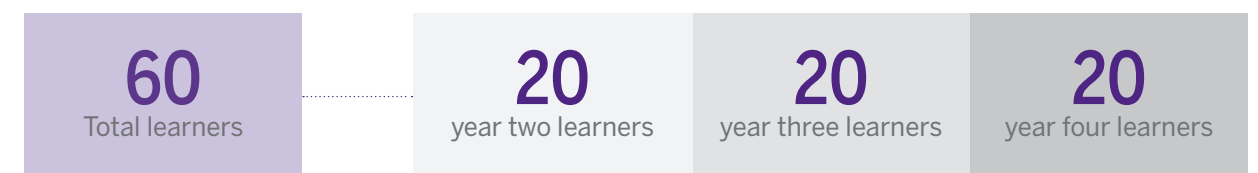
Mariam Park  
DDS Candidate  
Class of 2029



## Advanced Standing Program FOR INTERNATIONAL DENTAL GRADUATES (DDS)

The three-year program is specifically designed for graduates of non-accredited dental programs who wish to practise general dentistry in Canada. Incoming learners join year two of Schulich Dentistry's DDS program.

Advanced Standing Program for International Dental Graduates total enrolment in 2025



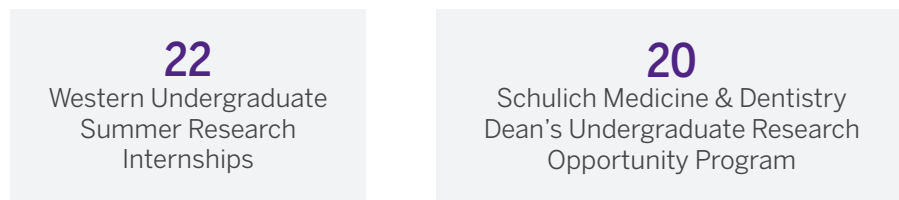
# Bachelor of Medical Sciences (BMSc)

This program combines interdisciplinary and immersive learning with world-class research opportunities, providing a strong foundation for a future in medical sciences.



## FROM CLASSROOM TO LAB: SUPPORT FOR RESEARCH

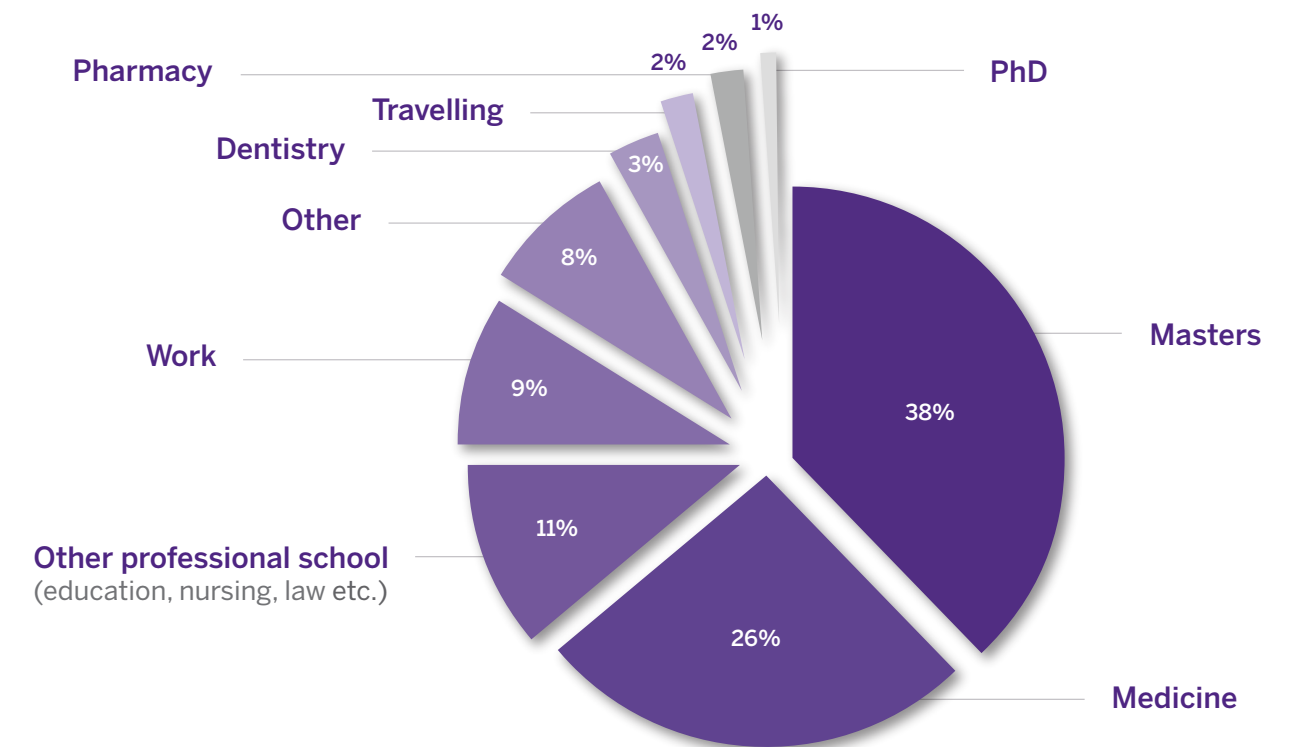
Learners in University-supported research placements



Learners in Federal Tri-Council-supported research placements



## OPENING DOORS: DIVERSE CAREER PATHWAYS FOR BMSC GRADUATES

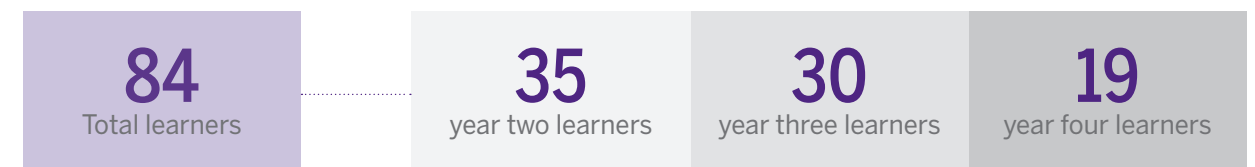


Based on survey of 153 respondents from the Class of 2025

# Bachelor of Science Honours (HBSc)

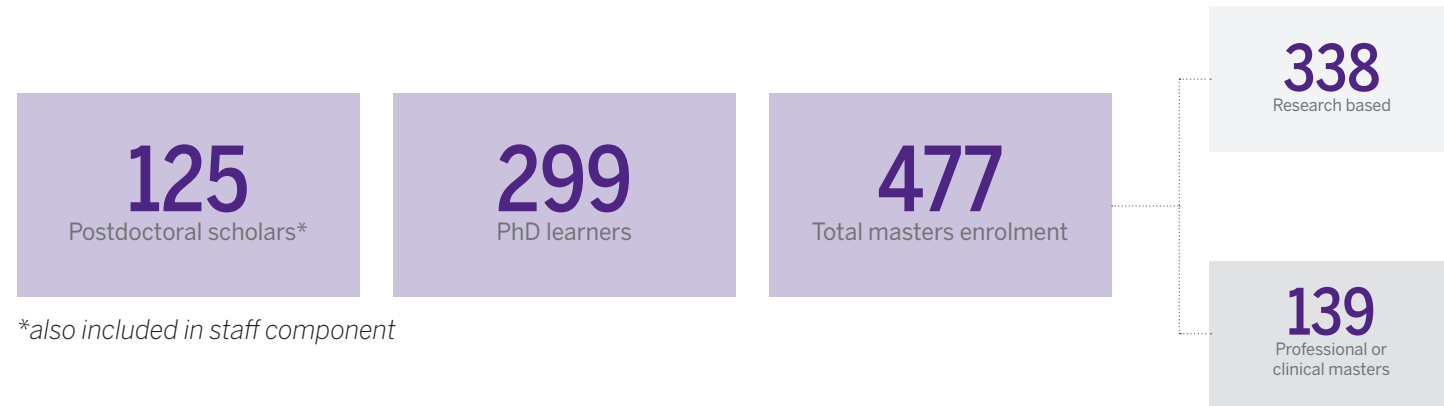
The Honours Specialization in Neuroscience leads to a Bachelor of Science Honours degree. Admission begins in year two, with the majority of students coming from year one Medical Sciences.

Total enrolment in 2025



# Graduate Studies and Postdoctoral Affairs

**901**  
TOTAL FULL-TIME GRADUATE TRAINEES



\*also included in staff component

## FUELLING THE FUTURE OF HEALTH RESEARCH

Manoj Reddy Medapati, PhD, spends his days growing human neurons in a lab – an intricate process that’s helping unlock new therapies for Alzheimer’s disease.

Across campus, Idowu Olawoye, PhD, is tackling another urgent threat. He’s developing ways to outsmart antimicrobial resistance by combining DNA sequencing and artificial intelligence.

Both are part of the dynamic community of postdoctoral scholars at Schulich Medicine & Dentistry – early-career scientists working on the frontlines of discovery.

Backed by generous donors, the new Schulich Postdoctoral Fellowship Program is helping scholars like Medapati and Olawoye accelerate their impact, offering competitive salaries, mentorship and opportunities for interdisciplinary collaboration.

The program also reflects Western University’s broader effort to expand research impact and tackle global challenges by investing in people. It complements the recently expanded Western Postdoctoral Fellowship Program, which more than doubled in size this year, and further strengthens the University’s position as a destination for top research talent.



Breanne Kearney’s path to neuroscience began in a therapy room, working with a young child whose trauma had been mistaken for behavioural problems.

“It shifted things entirely for me,” Kearney said.

“It got me thinking about the connection between sensory processing and trauma, and how we can use this in therapy to intervene more effectively.”

In the fall of 2025, she graduated with a PhD in neuroscience in one hand and the Governor General’s Gold Medal in the other. Working with Dr. Ruth Lanius, Kearney’s research explores sensory-motor responses to trauma and emerging therapies for patients who have not benefited from traditional treatment.



Idowu Olawoye, PhD

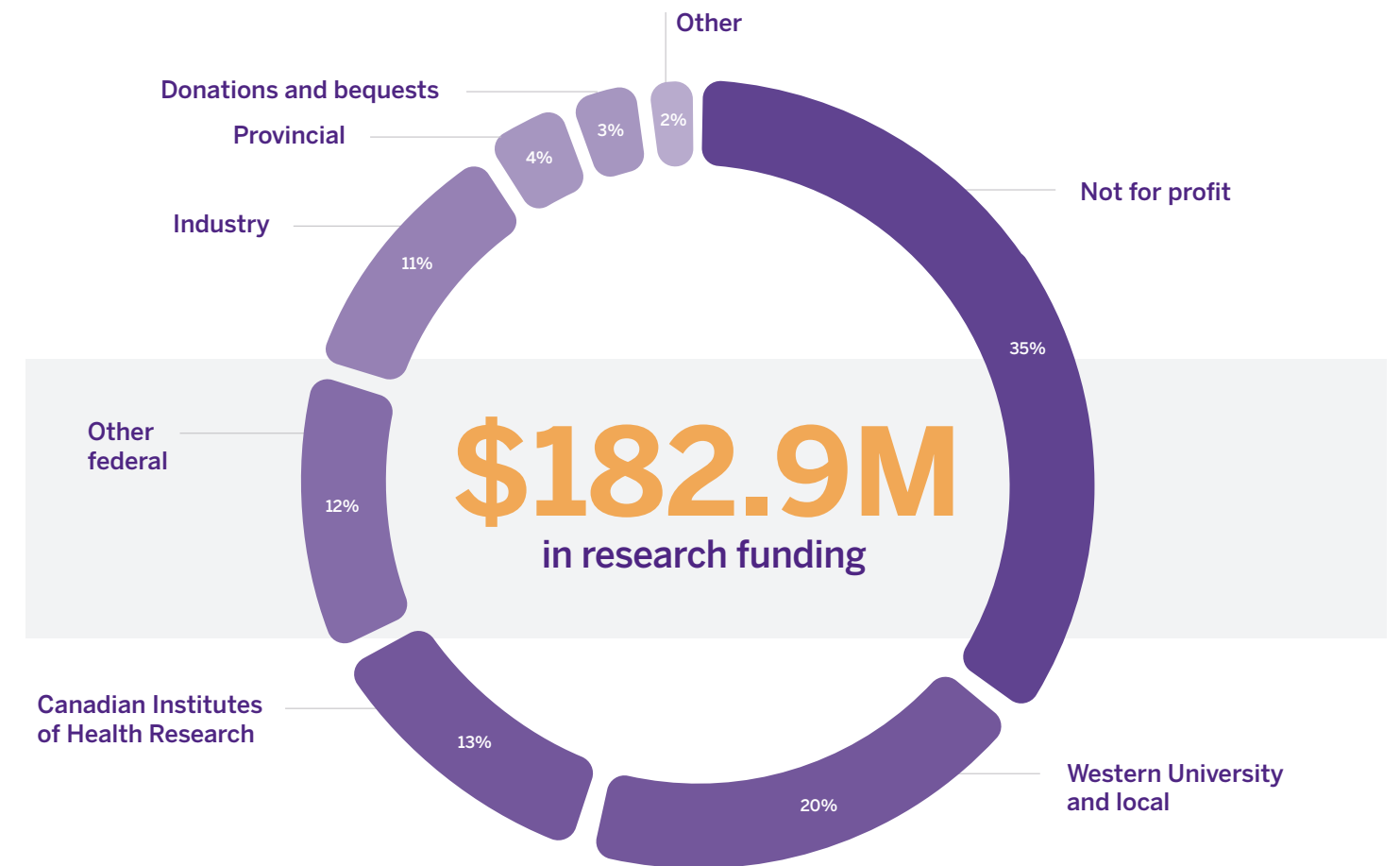


Manoj Reddy Medapati, PhD

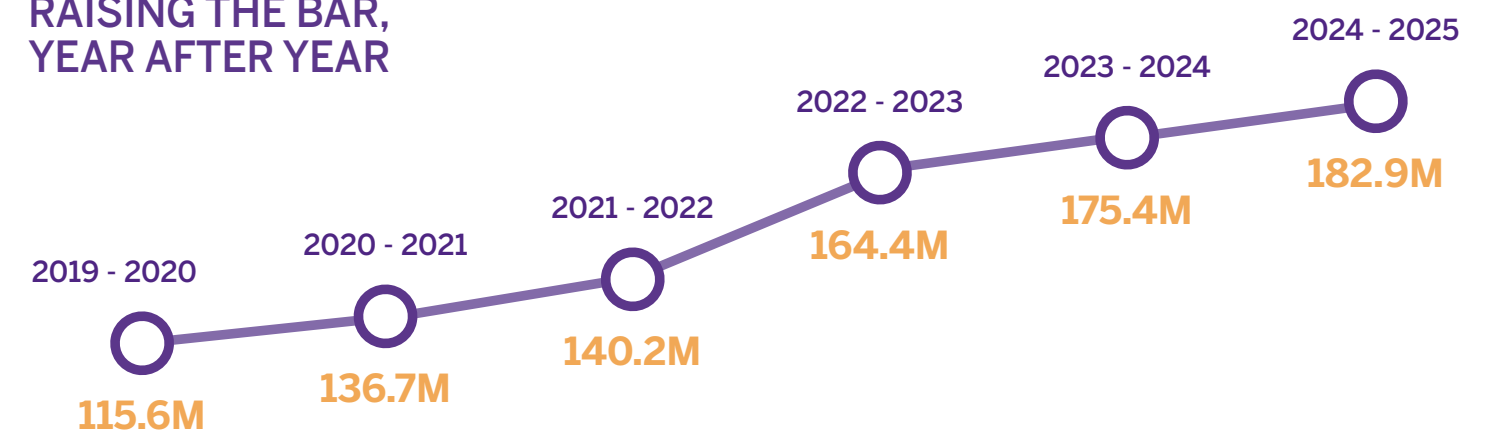
# RESEARCH IMPACT



## Reaching new heights in research funding



### RAISING THE BAR, YEAR AFTER YEAR

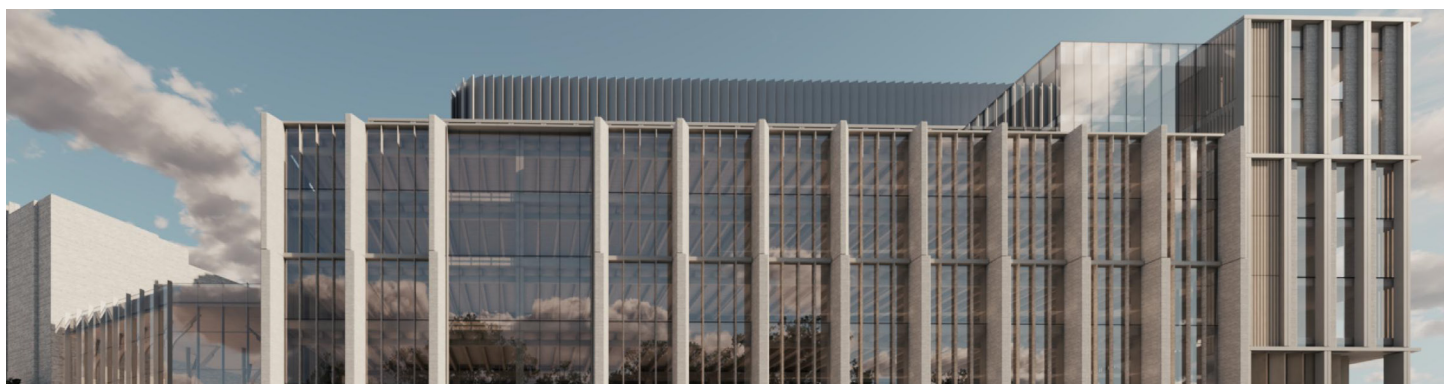


## Investing in innovation



Construction has begun on a new research centre that will build on the School's – and Western University's – reputation as a national leader in the understanding, prevention and treatment of infectious diseases.

A first in Canada, and one of only a few in the world, the Pathogen Research Centre will bring real-world testing environments, advanced containment and manufacturing of therapeutics for clinical trials under one roof.



Western University is planning for the Bioconvergence Centre, a 375,000-square-foot facility that will transform health research and science and medical education.

The state-of-the-art interdisciplinary research space will advance one of the University's core strengths – biotherapeutics research and development – drawing on expertise across medicine, the biomedical and life sciences and engineering.

It will serve as a hub for interdisciplinary teams from Schulich Medicine & Dentistry and the Faculties of Engineering, Health Sciences and Science.

## ENDOWED RESEARCH CHAIRS

Chair name	Incumbent 2025/2026
Andrew Lazarovits Chair in Immunobiology and Transplantation	Dr. Alp Sener
Antonios Mamandras Chair in Graduate Orthodontics	Dr. Ali Tassi
Beryl Ivey Chair in One Health	Dr. Francisco Olea-Popelka
Cecil and Linda Rorabeck Chair in Molecular Neuroscience and Vascular Biology	Taylor W. Schmitz, PhD*
Charles G. Drake Chair in Neurosurgery Research**	Dr. Victor Yang*
Chair in Cardiovascular Clinical and Translational Research**	Dr. Habib Khan*
Chair in Orthopaedic Research and Innovation**	In progress
Chair in Orthopaedic Spine & Trauma Biomechanics	Dr. Irene Yang
Children's Health Foundation Chair in Paediatrics Research	Dr. Craig Campbell
Chin-Hardie Chair in Urologic Oncology	Dr. Brant Inman
Col. J.B. McLean (Fallon) Memorial Chair in Clinical Preventative Medicine	Dr. Saverio Stranges
Diabetes Canada Chair in Diabetes Management	Dr. Kristin Clemens
Dr. Adam Linton Chair in Kidney Health Analytics	Dr. Matthew Weir
Dr. Brian W. Gilbert Chair in Primary Health Care	Dr. Sonja Reichert
Dr. John W.D. and Susan McDonald Chair in Inflammatory Bowel Disease	Dr. Vipul Jairath
Dr. Robert Lindsay Chair in Dialysis Research and Innovation	Dr. Shih-Han Susan Huang
Dr. Robert Zhong Research Chair in Translational Transplant Research	Dr. Lakshman Gunaratnam
Dr. Sandy Kirkley Chair in Musculoskeletal Research	David W. Holdsworth, PhD
Earl Russell Chair in Pain Management	Dr. Eldon Loh
Edith Schulich Vinet Chair in Human Genetics	Dr. Robert Hegele
Eugen Drewlo Chair in Kidney Research and Innovation	Dr. Dervla Connaughton
Graham King Research Chair	Dr. James Johnson
GSK Chair in Clinical Pharmacology	Dr. Douglas Fraser*
Hannah Chair in the History of Medicine	Shelley P. McKellar, PhD
Harris-Woodman Chair in Psyche & Soma	Dr. Ruth Lanius
Heart & Stroke Foundation Barnett-Ivey Chair	Dr. Mark Chandy
Huntington Society of Canada Research Chair	Patrick O'Donoghue, PhD
Ian McWhinney Chair of Family Medicine Studies	In progress

\*Newly appointed for 2025

\*\*Newly established for 2025

Chair name	Incumbent 2025/2026
J.C. Kennedy Chair in Orthopaedic Surgery	Dr. Abdel-Rahman Lawendy
Jack Cowin Chair in Epilepsy Research	Dr. Jorge Guillermo Burneo
Jacob J. Wolfe Distinguished Medical Research Chair in Human Gene Function	Dr. Robert Hegele
John Denstedt Chair in Surgical Simulation	Dr. Audra Duncan
Kathleen and Dr. Henry Barnett Chair in Stroke Research	Dr. Luciano Sposato
Kay Family Chair in Transformational Kidney Care	Dr. Amit Garg*
Marcel and Louise Brunette Research Chair in Ophthalmology	Dr. Cindy Hutnik
Martha G. Blackburn Chair in Cardiovascular Research	Dr. Robert Hegele
Neil McKenzie Chair in Cardiac Care	Dr. Geoffrey Pickering
Provincial Endowed Academic Chair in Autism and Behavioural Sciences	Dr. Julio Martinez-Trujillo
Ramsay W. Gunton Chair in Cardiology	Dr. Raymond Yee
Ray and Margaret Elliott Chair in Surgical Innovation	Dr. Michael Chu
Research Chair in Auditory Biophysics and Engineering	Hanif Ladak, PhD
Research Chair in Neurotology and Translational Hearing Innovation	Dr. Sumit Agrawal
Richard and Beryl Ivey Chair in Clinical Neurological Sciences	Dr. David Steven
Richard and Jean Ivey Fund Chair in Molecular Toxicology	Qingping Feng, PhD
Richard Ivey Chair of Medicine	Dr. Wael Haddara*
Richard Ivey Chair of Surgery	Dr. Emil Schemitsch
Sheldon H. Weinstein Chair in Diabetes Research	David Hess, PhD
Tanna Schulich Chair in Neurosciences & Mental Health	Dr. J. Donald Richardson
Ting-Yim Lee Chair in Medical Biophysics	In progress
Ting-Yim Lee Chair in Translational Medical Imaging	Dr. Narinder Paul
Verspeeten Chair in Oncology**	Dr. Michael Ott*
Verspeeten Chair in Translational Cancer Research**	In progress
William F. Clark Chair in Nephrology	Dr. Louise Moist
Wolfe Medical Research Chair in Pharmacogenomics	Dr. Richard Kim

\*Newly appointed for 2025  
 \*\*Newly established for 2025

## CANADA RESEARCH CHAIRS

Canada Excellence Research Chair		
Neurovirology and Neuroimmunology	Dr. Robyn Klein	
Canada Research Chair	Current chair holder	Tier
HIV Pathogenesis and Viral Control	Eric Arts, PhD	1
Lung Imaging to Transform Patient Outcomes	Grace Parraga, PhD**	1
Molecular and Epigenetic Basis of Cancer	Shawn Li, PhD	1
Neurochemistry of Dementia	Marco Prado, PhD	1
Primary Health Care and Health Equity	Maria Mathews, PhD	1
Translational Cognitive Neuroscience	Lisa Saksida, PhD**	1
Computational Approach to Health Research	Pingzhao Hu, PhD	2
Computational Neuroimaging	Ali Khan, PhD	2
Diffusion Magnetic Resonance Imaging	Corey Baron, PhD	2
Genital Immunology and STI Prevention	Jessica Prodger, PhD	2
Mechanistic Bacteriology	Patrick Moynihan, PhD*	2
Musculoskeletal Biology and Health	Matthew Grol, PhD	2
Pathogen Genomics and Bioinformatics	Jennifer Guthrie, PhD	2
Public Health Economics	Shehzad Ali, PhD**	2
Public Mental Health Research	Kelly Anderson, PhD	2
Translational Neuropsychopharmacology	Jibran Khokhar, PhD	2

## WESTERN RESEARCH CHAIRS

<b>Leadership Chair</b>	Shawn Whitehead, PhD
<b>Leadership Chair</b>	Daniel Lizotte, PhD
<b>Leadership Chair</b>	Matthew Teeter, PhD*
<b>Leadership Chair</b>	Grace Parraga, PhD*
<b>Legacy Chair</b>	
Cognitive Neuroscience	Timothy Bussey, PhD
<b>Strategic Focus Chairs</b>	
Bioinformatics	Michael Hallett, PhD
Biotherapeutics	Dr. Kun Ping Lu
Indigenous Planetary Health	Nicole Redvers, DPhil, ND
Neurocognition	Stefan Everling, PhD
Viral Pathogenesis	Miguel Quiñones-Mateu, PhD

\* New for 2025  
 \*\* Renewals for 2025

# SOCIAL ACCOUNTABILITY



## SCHULICH DENTISTRY IN ACTION: SERVING COMMUNITIES, ADVANCING CARE

**13,000**

appointments per year in the main dentistry clinic

**5,000**

dental clinic patients

**1,300**

orthodontics patients

**450**

paediatric clinic patients

## Empathy in education, compassion in care



### THE HUMBLE ART OF LISTENING WELL

The exam room. A place where two stories often meet – one clinical, the other shaped by identity and experience. Here, in this intimate space, humility is among the most powerful tools a doctor has.

A new training session for first-year medical students is putting this idea into practice. “Cultural Humility Communication,” a teaching block within the Clinical Skills course, helps students build interviewing skills in structured scenarios where culture, language and identity shape the clinical encounter.

## WHAT THE LAND CAN TEACH US

Postdoctoral associate Dayna Carroll, PhD, is exploring the intersection of Indigenous Knowledge, public health and environmental policy. A member of the Navajo Nation and the White Mountain Apache Tribe, Carroll completed one of North America’s first doctoral programs in Indigenous health and is part of a growing movement to prioritize Indigenous-led research and self-determined health systems.

“We’re at a critical point in time, as the planet continues to warm and we continue to see the devastating impact of wildfires and extreme weather,” Carroll said.

“How are we going to change our path? Part of that is critically engaging Indigenous communities on different solutions.”



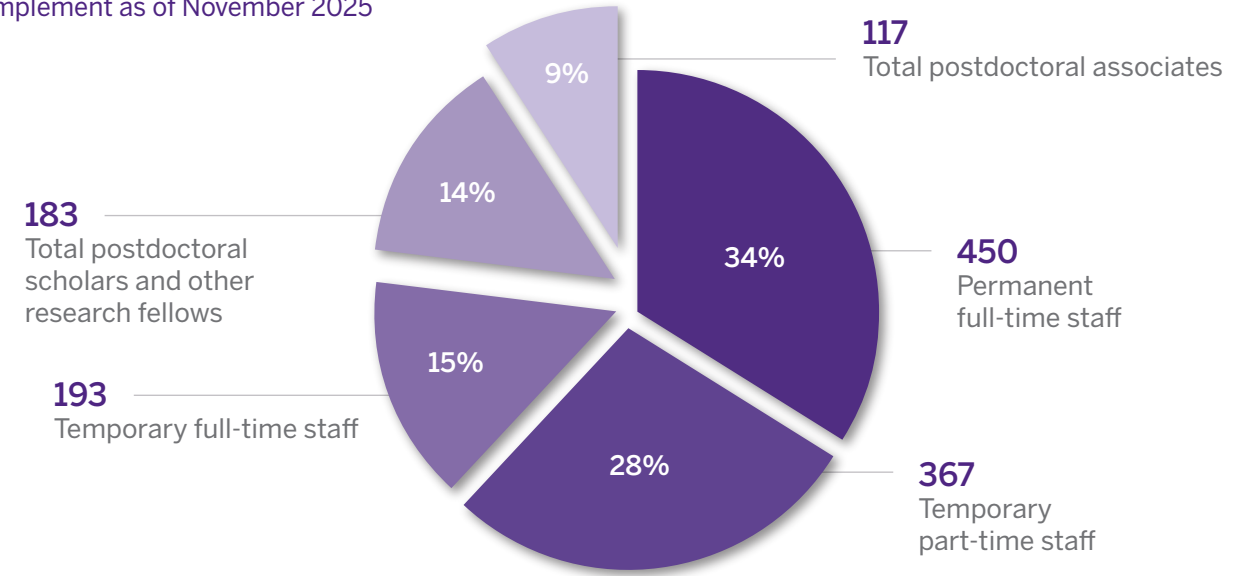
# PEOPLE



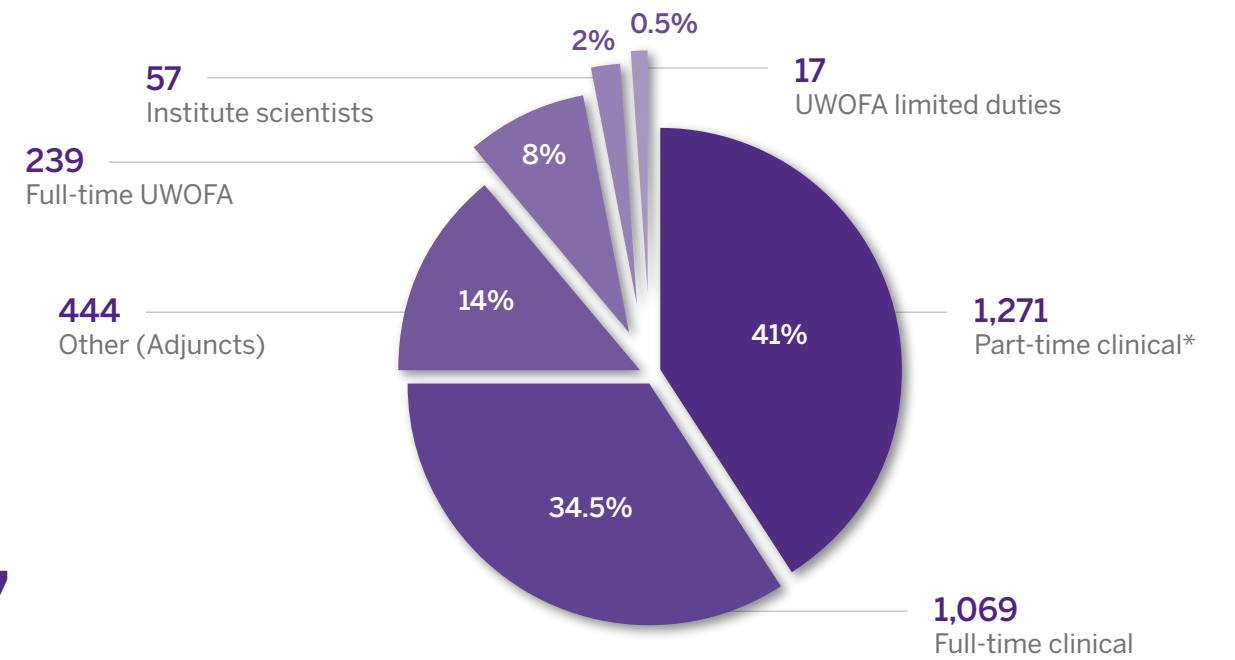
## Our people, our strength

Faculty and staff complement as of November 2025

**1,310**  
STAFF



**3,097**  
FACULTY



\*Includes MDs who are working at London hospitals part time and MD preceptors in the Distributed Education network, including Windsor Campus

## LEADERSHIP

*accurate as of Feb. 1, 2026*

DEAN		TERM	
	Dr. John Yoo	2nd	Jul. 1, 2025 – Jun. 30, 2030
ADMINISTRATIVE LEADERSHIP			
Chief Administrative Officer	Rachel Halaney, MBA		N/A
VICE DEANS			
Basic Medical Sciences	Susanne Schmid, PhD	2nd	Jul. 1, 2025 – Jun. 30, 2030
Clinical Academic Affairs	Dr. Glenn Bauman	1st	Dec. 1, 2025 – Nov. 30, 2030
Dentistry (Director)	Dr. Carlos Quiñonez	1st	Jun. 1, 2022 – May 31, 2027
Medical Education	Dr. Shannon Venance	1st	Aug. 1, 2021 – Jul. 31, 2026
Research & Innovation	Robert Bartha, PhD	1st	Sep. 1, 2022 – Aug. 31, 2027
ASSOCIATE DEANS			
Admissions	Dr. George Kim	1st	Jul. 1, 2022 – Jun. 30, 2027
Basic Medical Sciences Undergrad. Education	Brad Urquhart, PhD	2nd	Sep. 1, 2025 – Aug. 31, 2030
Continuing Professional Development & Faculty Development	Dr. William McCauley	1st	Nov. 1, 2022 – Oct. 31, 2027
Equity and Social Accountability	Dr. Sukhveer Bains	1st	Jan. 1, 2026 – Dec. 31, 2030
Graduate & Postdoctoral Studies	Nica Borradaile, PhD	1st	Jul. 1, 2025 – Jun. 30, 2030
Learner Experience	Dr. Robert Stein	1st	Feb. 1, 2024 – Jan. 31, 2029
Postgraduate Medical Education	Dr. Tamara Van Hooren	1st	Jan. 1, 2025 – Dec. 31, 2029
Clinical Research	Dr. Amit Garg	1st	Oct. 1, 2021 – Sep. 30, 2026
Undergraduate Medical Education	Dr. Peter Wang	1st	Jul. 1, 2025 – Jun. 30, 2030
Windsor Campus	Dr. Larry Jacobs	2nd	Sep. 1, 2023 – Aug. 31, 2028
ASSISTANT DEANS			
Awards and Research Chairs	Dale Laird, PhD	2nd	Sep. 1, 2024 – Jun. 30, 2027
Clinical Research Training	Dr. Reena Khanna	1st	Jul. 1, 2023 – Jun. 30, 2028
Distributed Education	Dr. Victor Ng	1st	May 1, 2023 – Apr. 30, 2028
Learner Experience (Dentistry)	Dr. Shawn Steele	1st	Aug. 1, 2023 – Jul. 31, 2028
Learner Experience (Postgraduate Medicine)	Dr. Laura Diachun	1st	May 1, 2023 – Apr. 30, 2028

Learner Experience (Undergraduate Medicine)	Dr. Robin Mackin	1st	Aug. 1, 2024 – Jul. 31, 2029
Program Review and Development	Walter Rushlow, PhD	1st	Dec. 1, 2025 – Nov. 30, 2030
Translational Research	Silvia Penuela, PhD	1st	Jul. 1, 2025 – Jun. 30, 2030
Undergraduate Medical Education – Curriculum, Windsor Campus	Dr. Alice Tsui	1st	Apr. 1, 2023 – Mar. 31, 2028

### BASIC DEPARTMENT CHAIRS

Anatomy & Cell Biology	Lauren Flynn, PhD	1st	Jul. 1, 2025 – Jun. 30, 2030
Biochemistry	Greg Gloor, PhD	2nd	Jul. 1, 2024 – Jun. 30, 2029
Epidemiology & Biostatistics	Saverio Stranges, PhD	2nd	Oct. 1, 2024 – Sep. 30, 2026
Medical Biophysics	Charles McKenzie, PhD	Acting	Jul. 1, 2025 – Jun. 30, 2026
Microbiology & Immunology	Jimmy Dikeakos, PhD	1st	Feb. 1, 2026 – Jan. 31, 2031
Physiology & Pharmacology	Cheryle Séguin, PhD	Acting	Jul. 1, 2025 – Jun. 30, 2027

### CLINICAL DEPARTMENT CHAIRS

Anesthesia & Perioperative Medicine	Dr. Christopher Harle	Interim	May 1, 2025 – Nov. 30, 2026
Clinical Neurological Sciences	Dr. David Steven	2nd	Jan. 1, 2024 – Dec. 31, 2028
Family Medicine	Dr. Scott McKay	1st	Feb. 1, 2022 – Jan. 31, 2027
Medical Imaging	Dr. Narinder Paul	2nd	Jul. 1, 2022 – Jun. 30, 2027
Medicine	Dr. Wael Haddara	1st	Aug. 1, 2025 – Jul. 31, 2030
Obstetrics and Gynaecology	Dr. Tracey Crumley	2nd	Jan. 1, 2026 – Dec. 31, 2030
Oncology	Dr. Michael Ott	1st	Jun. 1, 2023 – May 31, 2028
Ophthalmology	Dr. Cindy Hutnik	1st	Jul. 1, 2022 – Jun. 30, 2027
Otolaryngology - Head & Neck Surgery	Dr. Sumit Agrawal	1st	Mar. 1, 2025 – Feb. 28, 2030
Paediatrics	Dr. Craig Campbell	1st	Jun. 1, 2023 – May 31, 2028
Pathology and Laboratory Medicine	Dr. David Driman	1st	Dec. 1, 2021 – Nov. 30, 2026
Physical Medicine & Rehabilitation	Dr. Keith Sequiera	1st	Mar. 1, 2024 – Feb. 28, 2029
Psychiatry	Dr. Patricia Hall	1st	Dec. 1, 2025 – Nov. 30, 2030
Surgery	Dr. Emil Schemitsch	2nd	Jan. 1, 2021 – Jun. 30, 2026



## JOINING THE RANKS OF MEDICAL HEROES

Dr. Robert Hegele is one of six Canadians honoured with induction into the Canadian Medical Hall of Fame in 2026.

A Distinguished University Professor, Hegele holds the Edith Schulich Vinet Chair in Human Genetics, the Jacob J. Wolfe Distinguished Medical Research Chair in Human Gene Function and the Martha G. Blackburn Chair in Cardiovascular Research.

Since joining Western University in 1997, he has become one of Canada's most influential clinician-scientists, publishing more than 1,000 papers and collaborating with thousands of colleagues worldwide. He now joins the ranks of his own medical heroes, including Drs. Frederick Banting and Charles Best.

"I never imagined I'd be in their company," said Hegele, who was also recently elected to the Royal Society of Canada.

"These are the people I grew up reading about, the ones who shaped how we understand medicine."

## RESEARCH EARNS PROVINCIAL HONOURS

Postdoctoral scholar Olivia Ghosh-Swaby, PhD, was named a recipient of Ontario's Minister's Award of Excellence in the "Everyday Heroes" category, recognizing her outstanding impact on students and colleagues. Ghosh-Swaby, who completed her doctorate in neuroscience at Schulich Medicine & Dentistry, advances brain health research while championing equity, diversity and inclusion across academia and sport.

From founding the Ontario Women's Intercollegiate Football Association to leading national flag football development, her leadership creates lasting pathways for young women.

"It's refreshing. It's nice to be re-motivated to do the work I'm doing every day," Ghosh-Swaby said.

(L to R): Ontario's Minister of Colleges, Universities, Research Excellence and Security Nolan Quinn, Olivia Ghosh-Swaby, PhD, and Western President Alan Shepard



## INTERNAL AWARDS

### Schulich Awards of Excellence for Faculty (Research)

Distinguished Researcher Award	Marco Prado, PhD
Researcher of the Year	Dr. Manuel Montero-Odasso
Research & Innovation	

#### Early Career

Dr. Matthew Cecchini  
Dr. Habib Khan

#### Mid Career

Dr. Naveen Poonai  
Peter Stathopoulos, PhD

### Schulich Awards of Excellence for Faculty (Education)

Continuing Education and Mentorship Award	Dr. Priya Subramanian Dr. Doris Yuen
Distributed Education Award	Dr. Laura Clademenos Dr. Elena Matusa Dr. Sheri Roszell Dr. Shawn Segeren
Distinguished Leader Award	Nicole Campbell, PhD
Emerging Leader Award	Dr. Michelle-Lee Jones
Educator Award	Andrew Deweyert, PhD Dr. Jonathan Gregory

### Schulich Awards of Excellence for Staff

Continuous Excellence Award (Individual)	Patrick Barfoot Christie Vanderboor, PhD
Continuous Excellence Award (Team)	Dave Creces and Prabhjot Sohal, PhD
Emerging Leader Award	Jessica Jamieson
Distinguished Leader Award	Patty Smith

**Awards of Excellence – Windsor Campus**

Associate Dean's Award	Stephanie Baker Dr. Dema Kadri Dr. Ian Mazzetti
Educator's Award	Anna Farias Dr. Kerry Mayrand Dr. Ed Sabga
Learner Peer Award	Dr. Hasan Hawilo - Psychiatry PGY3 Jana Khanafer - MD Y2 Nathaniel Yuen - MD Y4
Dr. Colin Nisbet Award for Excellence in Emergency Medicine	Manahel Elias
Dr. Gordon Vail Resident Award in Emergency Medicine	Dr. Peter Denezis
Dr. Brian Burke Resident Award in Psychiatry	Dr. Hasan Hawilo
Windsor Family Medicine – Faculty of the Year Award	Dr. Margarete Youssef
Windsor Family Medicine, Subspecialty Rotation – Faculty of the Year Award	Dr. Bilal Akil
Family Medicine Post Graduate Award for Academic Leadership	Dr. Rachel Haywood
City of Windsor – Family Medicine Physician Award	Dr. Mark Rodriguez
Windsor Psychiatry – Faculty of the Year Award	Dr. Andrew Bridgen

**Alumni of Distinction Awards**

Alumni of Distinction – Dentistry	Dr. Benjamin Pliska, DDS'05
Alumni of Distinction – Medicine	Dr. John Denstedt, MD'82, Residency'87
Excellence in Basic Science Research	Dr. Cynthia Hawkins, PhD'96, MD'97
Dr. Stephen Blizzard Trailblazer Award	Dr. Jennifer Gunter, Residency'95
Community Service Award	Dr. Lorraine Elit, MD'84
Young Alumni, Basic Science	Saumik Biswas, PhD'20
Young Alumni, Dentistry	Dr. Erin Walker, DDS'10
Young Alumni, Medicine	Dr. Steven Macaluso, MD'07, Residency'12

**Western University Awards**

Distinguished University Professor	Dr. Emil Schemitsch
Faculty Scholar	Kelly Anderson, PhD Aaron Ward, PhD Silvia Penuela, PhD Jessica Prodger, PhD Peter Stathopoulos, PhD

**Western University Research Excellence Awards**

Outstanding Emerging Scholar	Taylor Schmitz, PhD
Hellmuth Prize for Achievement in Research	Lisa Saksida, PhD

**Western Teaching Award**

Edward G. Pleva Award for Excellence In Teaching	Anita Woods, PhD
--	------------------

**Western Award of Excellence**

	Michele Grigg
--	---------------

**EXTERNAL AWARDS (ANNOUNCED IN 2025)**

Canadian Association for Medical Education (CAME)	<b>Certificate of Merit Awards</b> Dr. Fawad Ahmed Dr. Jessica Howard Dr. Julie Ann Van Koughnett
	<b>Rising Star Certificate of Excellence</b> Taylor McCann (Medical student) Dr. Anna Branch (Resident) Kayla Vieno-Corbett (Graduate student)
Canadian Medical Association (CMA)	<b>Young Leaders Award</b> Dr. Supriya Singh
Canadian Medical Hall of Fame awards	<b>Inductee</b> Dr. Robert Hegele
	<b>Student Awardee</b> Benson Law
Governor General's Gold Medal	Breanne Kearney, PhD'25
Ontario Medical Association (OMA) for 2024	<b>Medical Student Achievement Award</b> Dr. Lina Ghattas, MD'25
Ontario Minister of Colleges, Universities, Research Excellence and Security Award of Excellence	Olivia Ghosh-Swaby, BMSc'18, PhD'25
Order of Canada	Cheryl Forchuk, PhD
Royal Society of Canada (fellowships, medals/awards and college members)	<b>Fellows</b> Dr. Robert Hegele

# PARTNERSHIPS



Transforming health through powerful partnerships – locally, nationally and globally

## NEW CLERKSHIP PROGRAM EMBEDS MEDICAL STUDENTS IN SARNIA-LAMBTON

For Maggie Parkinson, stepping into Bluewater Health this past September felt like a homecoming. A member of Aamjiwnaang First Nation, she grew up in the Sarnia area and is now training in the same hospital where her family has long received care.

“It’s really special to be back in my home community,” she said. “I hope to one day have a family practice here, serving Aamjiwnaang and the surrounding area. Being close to community and learning here makes that feel possible.”

Parkinson is one of five third-year medical students who began their full clerkship training in Sarnia-Lambton in fall 2025, working alongside local physicians and health teams in specialties ranging from emergency medicine to psychiatry.



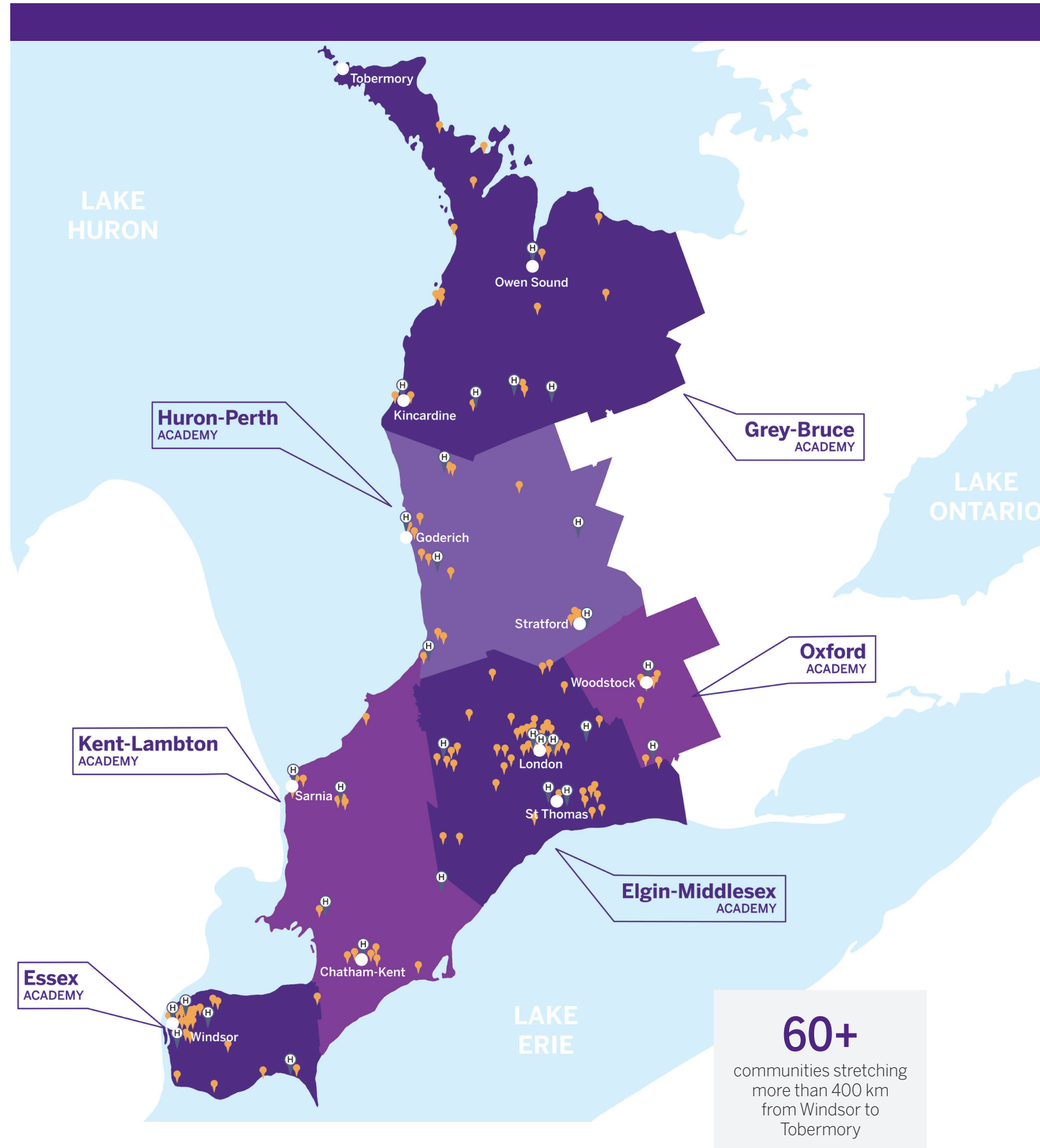
## PARTNERING FOR GREATER IMPACT

In late 2025, London Health Sciences Foundation (LHSF) and Western University announced an investment of nearly \$16.5 million to create four new endowed research chair positions to support life-changing research into persistent health conditions – from heart disease to brain disorders.

The four new endowed chairs, which will drive innovation in neurosurgery, cardiovascular medicine, kidney health and orthopaedics, are the latest in a series of 18 that have been established in recent years with the support of public and private donors.

“We are grateful for the generosity and vision of our local hospital partners and their foundations, as well as our private donors, that propels our life-changing research forward,” said Dr. John Yoo, dean.

## Where our medical trainees learn and serve in Southwestern Ontario



### ELGIN-MIDDLESEX ACADEMY

- London Health Sciences Centre
- St. Joseph's Health Care London
- Middlesex Centre Regional Medical Clinic
- Middlesex Hospital Alliance  
Strathroy, Newbury
- Southwest Middlesex Health Centre
- St. Thomas Elgin General Hospital
- Strathroy Family Health Organization

### ESSEX ACADEMY

- Hôtel-Dieu Grace Healthcare
- Windsor Regional Hospital
- Windsor Family Health Centre
- Erie Shores Healthcare

### GREY-BRUCE ACADEMY

- Brightshores Health System  
Lions Head, Owen Sound, Markdale, Meaford, Southampton, Wiarton
- South Bruce Grey Health Centre  
Walkerton, Kincardine, Durham, Chesley
- Hanover & District Hospital
- Hanover Medical Centre

### HURON-PERTH ACADEMY

- Huron Perth Healthcare Alliance  
Clinton, St. Marys, Seaforth, Stratford
- Listowel-Wingham Hospital Alliance  
Listowel, Wingham
- Huron Health System  
Alexandra Marine & General Hospital (Goderich)  
South Huron Hospital (Exeter)
- Listowel Medical Centre
- Stratford Medical Centre

### KENT-LAMBTON ACADEMY

- Bluewater Health  
Sarnia, Petrolia
- Chatham-Kent Health Alliance  
Chatham, Wallaceburg
- Chatham-Kent Family Health Team  
Chatham, Blenheim, Wallaceburg
- Chatham-Kent Community Health Centres
- Central Lambton Family Health Team

### OXFORD ACADEMY

- Woodstock General Hospital
- Rural Roads Health Services  
(formerly Alexandra Hospital and Tillsonburg District Memorial Hospital)  
Ingersoll, Tillsonburg

Distributed Education (DE) learners:	Postgraduate Training	Clerkship Training	Undergraduate Elective Training	Discovery Week	Total
Number of learners	518	172	99	195	984
Average amount of time a learner spends in DE	1.5 months	4 months	1.5 months	1 week	

1,614 training months reported to the Ontario Ministry of Health and Long-Term Care in 2025

**Advancing community-driven medical training**

# SUPPORTING OUR LEARNERS



## Supporting futures, inspiring leadership

Monetary breakdown of annual scholarships supported by Mr. Seymour Schulich (May 1, 2024 - April 30, 2025)

### MEDICINE

**\$2,049,600**

total value of scholarships for 2024-2025

**62**

annual recipients

**\$33,600**

value per year, per student

**\$134,400**

total value per student over length of program (4 years)

### DENTISTRY

**\$216,000**

total value of scholarships for 2024-2025

**16**

annual recipients

**\$13,500**

value per year, per student

**\$54,000**

total value per student over length of program (4 years)

### GRADUATE STUDIES

**\$780,000**

total value of scholarships for 2024-2025

**52**

annual recipients

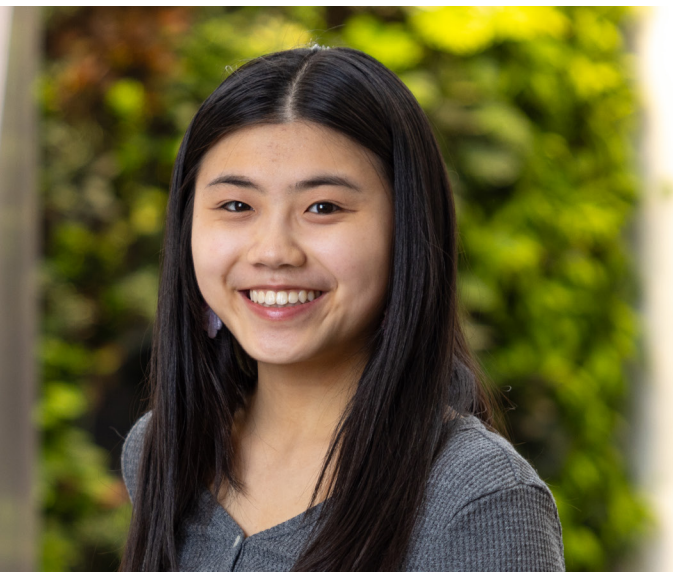
**\$15,000**

value per year, per student

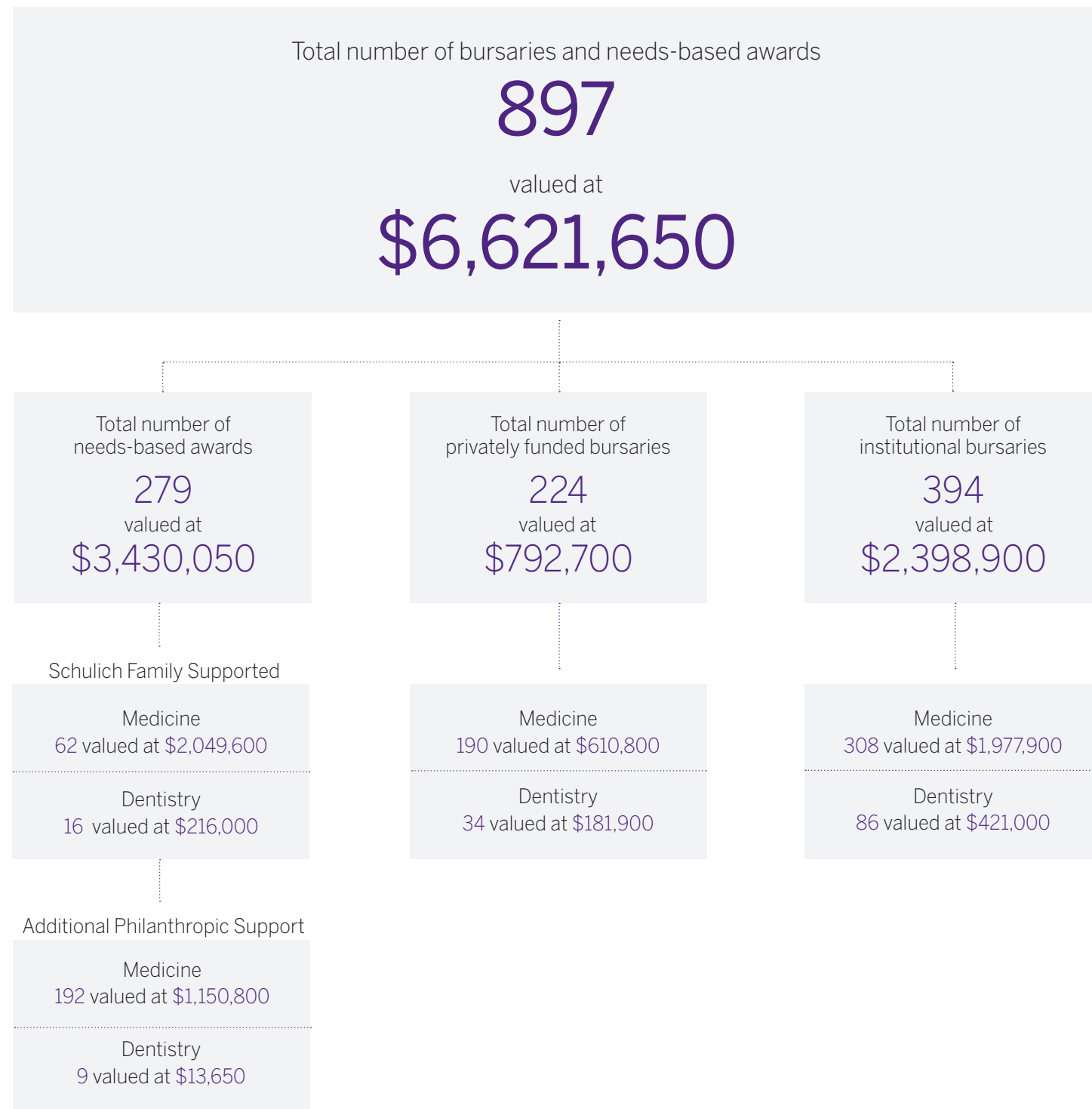
**N/A**

total value per student depends on length of program

“Giving to scholarships and internships is such a great way for donors to help students excel, and I'm super grateful for their support. The financial award was a huge relief. I love Western with my whole heart, and I'm so glad I'm here,” said Ivy Luo, a third-year medical sciences student.



Financial assistance breakdown for Medicine and Dentistry students supported during the 2024-2025 academic year



Grants and award funding for graduate students (May 1, 2024 - April 30, 2025)

Type of Scholarship	Basic Medical Sciences	Neuroscience	Total funds
Principal Investigator Funding	\$4,482,827	\$1,294,740	\$5,777,567
Western Graduate Research Scholarships	\$1,865,553	\$825,149	\$2,690,702
Natural Sciences and Engineering Research Council	\$1,280,000	\$411,167	\$1,691,167
Ontario Graduate Scholarships	\$1,090,000	\$435,000	\$1,525,000
Other (donor funding, private organizations, industry)	\$1,113,181	\$293,630	\$1,406,811
Canadian Institutes of Health Research	\$1,121,584	\$255,167	\$1,376,751
Doctoral Excellence Award	\$173,048	\$33,896	\$206,944
Dean's Research Scholarship	\$170,000	N/A	\$170,000
Vanier Canada Graduate Scholarship	\$83,333	\$50,000	\$133,333
Social Sciences and Humanities Research Council	\$109,833	N/A	\$109,833
<b>Total Funding</b>	<b>\$11,489,359</b>	<b>\$3,598,749</b>	<b>\$15,088,108</b>

**626**  
 Graduate Teaching Assistant contracts provided between Summer 2024 – Winter 2025

**\$2,783,964**  
 in funds provided to support Graduate Teaching Assistant contracts between terms Summer 2024 – Winter 2025

**HONOURING BRAXTON THROUGH SUPPORT FOR BRAIN RESEARCH**

After the loss of their son Braxton to a catastrophic brain injury, Western alumni Spencer and Shelby Brown transformed their grief into lasting impact by establishing the Braxton Stokes Brown Award in Paediatric Neuroscience. The endowed award provides annual funding to a resident or graduate student advancing research into brain injury and repair.

By directly supporting early-career researchers, the Browns are helping strengthen the next generation of clinician-scientists, ensuring Braxton's legacy lives on through discovery, compassion and hope for families facing similar challenges.



SCHULICH SCHOOL OF MEDICINE & DENTISTRY  
WESTERN UNIVERSITY  
RM. 3700, DR. DON RIX CLINICAL SKILLS LEARNING BLDG.  
LONDON, ON CANADA N6A 5C1

[schulich.uwo.ca](http://schulich.uwo.ca)



**All in.**