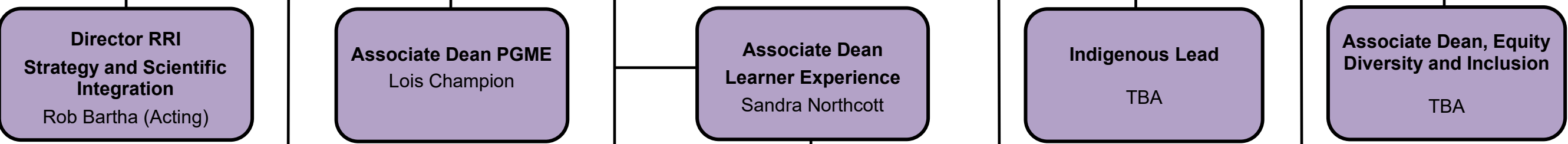
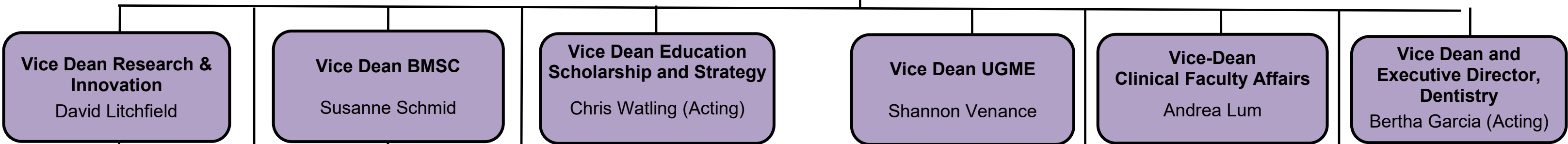


# Schulich School of Medicine & Dentistry Leadership Organizational Chart



**Associate Dean, Clinical Research**  
Amit Garg

**Assistant Dean Awards and Research Chairs**  
Dale Laird

**Assistant Dean, Pre-Clinical Research**  
Tim Regnault

**Associate Dean BMSUE**  
Brad Urquhart

**Associate Dean Graduate & Postdoctoral Studies**  
Thomas Drysdale

**Associate Dean Faculty Development/CPD**  
Valerie Schultz

**Associate Dean Learning with Technology & Simulation**  
Richard Cherry

**Director CERI**  
Chris Watling

**Assistant Dean Medicine and Dentistry Student Experience**  
Robby Stein

**Assistant Dean Postgraduate Learner Experience**  
Michelle Marlborough

**Assistant Dean Learner Experience, Dentistry**  
Jacinta Santos

**Associate Dean Medicine Admissions**  
Gary Tithcott (Acting)

**Associate Dean, Windsor Campus**  
Lawrence Jacobs

**Assistant Dean Distributed Education**  
George Kim

**Assistant Dean Professional Affairs**  
Bill McCauley

**Assistant Dean Faculty Equity & Wellbeing**  
Laura Foxcroft

**Associate Dean UGDE**  
Gildo Santos

**Assistant Dean Grad and PG Dental Education**  
Ali Tassi

**Director Dentistry Surgical Care Unit**  
Michael Shimizu