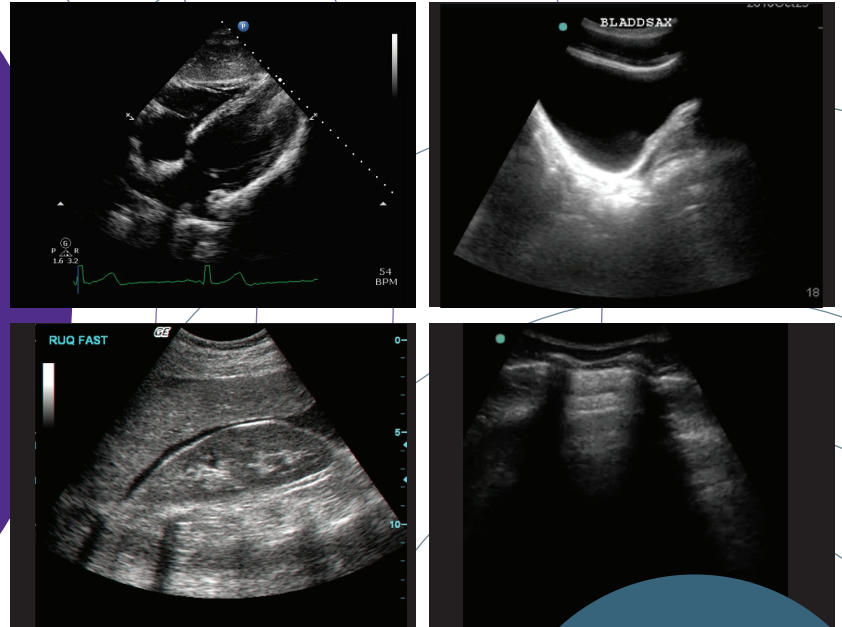


Course Objectives

To demonstrate the ability to obtain focused transthoracic echocardiography views, in addition to ultrasound views of the lungs, pleura, and airway for utilization in the perioperative setting. Participants will also demonstrate the ability to assess gastric contents and intra-abdominal free fluid.

To identify anatomical structures on ultrasound images and demonstrate techniques for optimizing image acquisition.

To distinguish between focused perioperative ultrasound findings that are normal and pathological.



Agenda

Day One

07:45 Registration

08:20 Opening Remarks

08:30 Head to Toe Ultrasound

09:15 Gastric Ultrasound

09:25 Abdominal Ultrasound

09:35 Break

09:50 Practical Session and Image Interpretation

12:30 Lunch

13:10 Imaging of the Lungs and Pleura

13:20 Imaging of the Airway

13:30 Practical Session and Image Interpretation

14:50 Break

15:05 Practical Session and Image interpretation

16:35 Adjournment

Day Two

07:45 Breakfast

08:30 Opening Remarks

08:40 Focused Transthoracic Echo.

08:55 LV and RV assessment

09:05 Pericardial fluid and IVC

09:15 Break

09:30 Practical Session and Image Interpretation

12:10 Lunch

12:50 Ultrasound during CPR

13:10 Valvular assessment

13:30 Practical Session and Image Interpretation

14:50 Break

15:05 Practical Session and Image Interpretation

16:25 Free scanning and course evaluation

17:00 Adjournment

Location

London Health Sciences Centre
University Hospital, 7th Floor, CSTAR
Auditorium, 339 Windermere Road,
London

Course Directors

Ahmed Hegazy, FRCPC

Assistant Professor, Department of Anesthesia & Division of Critical Care Western University

Wilfredo Puentes, MD

Assistant Professor, Department of Anesthesia & Perioperative Medicine Western University

Jon Borger, MD FRCPC

Assistant Professor, Department of Anesthesia & Perioperative Medicine Western University

Guest Faculty

Marcos Silva, MD FRCPC

Staff Anesthesiologist, Sunnybrook Health Sciences Centre, University of Toronto

Matthew McFarling, MD FRCPC

Clinical Anesthesiologist, Department of Anesthesia McMaster University

Course Faculty

Ramiro Arellano, MD FRCPC

Associate Professor, Department of Anesthesia & Perioperative Medicine Western University

Jason Chui, MD

Assistant Professor, Department of Anesthesia & Perioperative Medicine Western University

Daniel Bainbridge, MD FRCPC

Associate Professor, Department of Anesthesia & Perioperative Medicine Western University

Catalina Casas Lopez, MD MASc

Assistant Professor, Department of Anesthesia & Perioperative Medicine Western University

Ray Zhou, MD FRCPC

Assistant Professor, Department of Anesthesia & Perioperative Medicine Western University

Nathan Ludwig, MD FRCPC

Assistant Professor, Department of Anesthesia & Perioperative Medicine Western University

Osama Sefein, MD

Anesthesia Resident, Department of Anesthesia & Perioperative Medicine Western University

Target Audience

The Schulich School of Medicine, the London Health Sciences Center, and CSTAR are targeting

- Critical care physicians and trainees
- Anesthesiologists and trainees
- Emergency physicians and trainees
- Other clinicians providing care regularly to acutely ill patients



Registration

Contact

Charlotte Sikatori McLain

charlotte.sikatori@lhsc.on.ca

Phone

519 685 8500 Ext. 75813

Mail

Education Coordinator, UGE/PGE (Pain Medicine)

Anesthesia & Perioperative Medicine

Schulich School of Medicine & Dentistry Western

University - University Hospital, B3-411

Registration Fee

Practicing Physicians	\$750
Residents/Fellows	\$500
Fees include HST	

This event is an Accredited Group Learning Activity (Section 1) as defined by the Maintenance of Certification program of The Royal College of Physicians and Surgeons of Canada, approved by Continuing Professional Development, Schulich School of Medicine & Dentistry, Western University. (2.25 hours).

This is an Accredited Simulation Program (Section 3) as defined by the Maintenance of Certification Program of The Royal College of Physicians & Surgeons of Canada, and approved by Continuing Professional Development, Schulich School of Medicine & Dentistry, Western University on November 20, 2017. Program expires November 2017. Remember to visit MAINPORT to record your learning and outcomes. You may claim a maximum of 10.75 hours (credits are automatically calculated).

Each participant should claim only those hours of credit that he/she actually spent participating in the educational program.