

## The MD/PhD Program

The goal of the MD/PhD Program is to train Clinician Scientists who will become leaders in medical research and patient care. Students who are accepted into the MD/PhD program carry out their doctoral research in one of 10 graduate programs affiliated with Schulich Medicine & Dentistry and complete their clinical training through the Schulich Doctor of Medicine program.

## Why a Schulich MD/PhD at Western?

- Outstanding clinical education in a research-intensive environment
- Over \$140 million in health research funding annually
- More than 20 Canada Research Chairs
- Highly ranked in Canada for Medical/Doctoral studies
- 400-plus graduate students in medical science
- Financial assistance available
- Regional, national and international partnerships in research and education
- Home to Robarts Research Institute and affiliated with London Health Sciences Centre, St. Joseph's Health Care London and the Lawson Health Research Institute



### MD/PhD fast facts:

- Founded in 1995
- Currently 13 students in the program
- Seven-year program
- Flexible program structure
- Internationally renowned biomedical and clinical research

### Graduate programs affiliated with Schulich Medicine & Dentistry:

Anatomy & Cell Biology  
[www.schulich.uwo.ca/anatomy](http://www.schulich.uwo.ca/anatomy)

Biochemistry  
[www.schulich.uwo.ca/biochem](http://www.schulich.uwo.ca/biochem)

Biomedical Engineering  
[www.engga.uwo.ca/research/biomed](http://www.engga.uwo.ca/research/biomed)

Epidemiology & Biostatistics  
[www.schulich.uwo.ca/epidem](http://www.schulich.uwo.ca/epidem)

Medical Biophysics  
[www.schulich.uwo.ca/biophysics](http://www.schulich.uwo.ca/biophysics)

Pathology  
[www.schulich.uwo.ca/pathol/gradprogram.html](http://www.schulich.uwo.ca/pathol/gradprogram.html)

Microbiology & Immunology  
[www.schulich.uwo.ca/mni/MNI/grad.html](http://www.schulich.uwo.ca/mni/MNI/grad.html)

Neuroscience  
[www.uwo.ca/neuroscience](http://www.uwo.ca/neuroscience)

Physiology, Pharmacology & Toxicology  
[www.schulich.uwo.ca/physpharm](http://www.schulich.uwo.ca/physpharm)

Developmental Biology  
[www.uwo.ca/devbio](http://www.uwo.ca/devbio)

### For more information or to obtain an application contact:

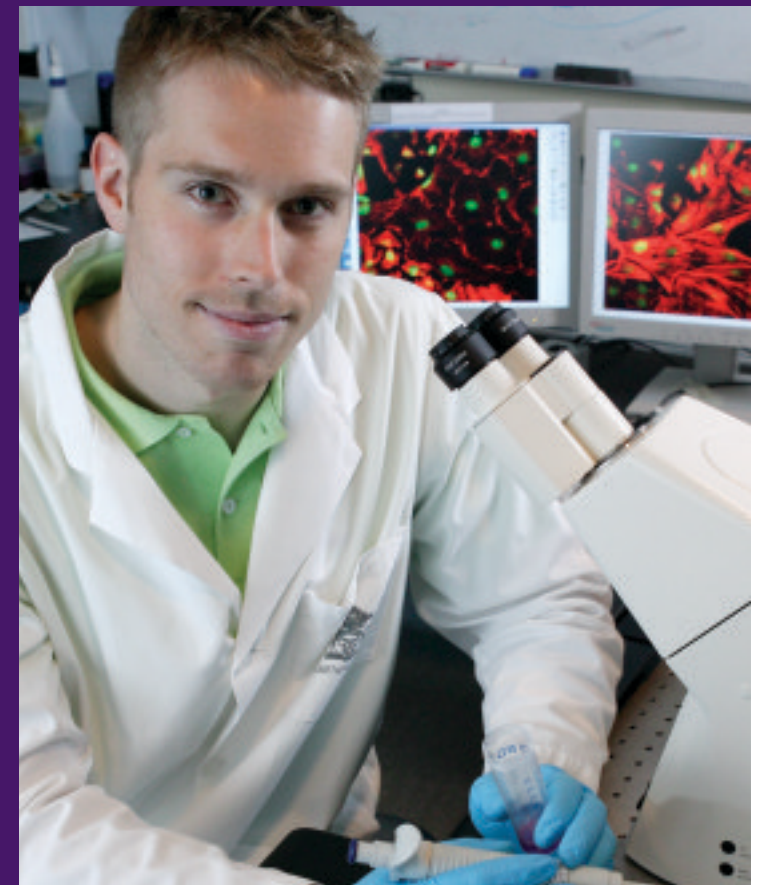
Vicki VanStrien, Office of the Dean  
Schulich School of Medicine & Dentistry  
The University of Western Ontario, London, ON N6A 5C1  
Phone: 519-661-2111 ext. 87908 Fax: 519-661-3797  
[vicki.vanstrien@schulich.uwo.ca](mailto:vicki.vanstrien@schulich.uwo.ca)  
Or visit: [www.schulich.uwo.ca/medicine/md\\_phd](http://www.schulich.uwo.ca/medicine/md_phd)



Schulich School of  
Medicine & Dentistry



## MD/PhD PROGRAM



The University of Western Ontario



# SHAPING THE FUTURE OF HEALTH CARE



## The Application Process

Students must submit applications and meet the admissions criteria of both the MD and PhD programs. An application is evaluated by the MD/PhD Committee using the same criteria of academic achievement and Medical School Admissions Test (MCAT) scores as the Medicine Admissions Committee. The research experience of the individual is also assessed. Qualified candidates are selected to attend an interview to gain a sense of the general skills, personality and potential of the individual, as well as their ability to cope with the workload and demands of the combined program.

## Admission Requirements

### Medical School Application (deadline in October)

- MCAT score & Grade Point Average (GPA) requirements\*
- Reference letters
- Biographical information
- Interview

\*For current MCAT and GPA requirements visit:

[www.schulich.uwo.ca/education/admissions/medicine](http://www.schulich.uwo.ca/education/admissions/medicine)

### MD/PhD Application (deadline December 1)

- Reference letters
- CV
- Statement of intent
- Transcripts



## Financial Support

The Schulich School of Medicine & Dentistry and the Faculty of Graduate Studies will provide a full tuition scholarship for three years of graduate research and a 60 per cent medical tuition scholarship to offset the principal costs of the four-year undergraduate medical program. During the research phases of the combined program, students will receive a stipend in accordance with the PhD level for their graduate program.



## Program Structure

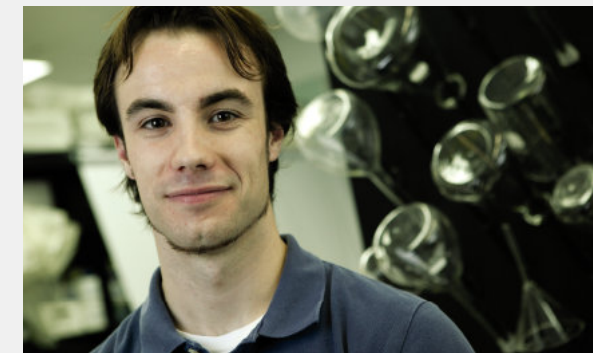
Schulich Medicine & Dentistry's MD/PhD program offers more flexibility in structure than any other program in Canada. You can choose whether to begin in research or medicine.

### Model 1

- Two years of undergraduate medical training
- Three years of research
- Last two years of undergraduate medical training

### Model 2

- Three years of research
- Four years of undergraduate medical training



## What our MD/PhD Students Say

"The reason I chose Western was the quality of both the medical and graduate education I would receive. I was also attracted by the nature of many of the research groups as the focus is truly on training young scientists. Along with the financial aid package and flexibility in program structure, Western was easily my first choice."

- *Matthew Cecchini, MD/PhD candidate 2014*

"Western has a tremendously organized and efficiently run MD/PhD program at one of the top research-intensive universities in Canada."

- *Tom Appleton, MD/PhD candidate 2011*

"Medicine and research are heavily intertwined since the progression of medicine relies upon objective research. The opportunity to incorporate research into my clinical practice would allow me to enhance the care of my patients. My current medical research ignites my creativity, curiosity and critical thinking skills and allows me to further develop these skills which are crucial for the progress of medicine."

- *Caroline Albion, MD/PhD candidate 2013*