

New Faculty Orientation

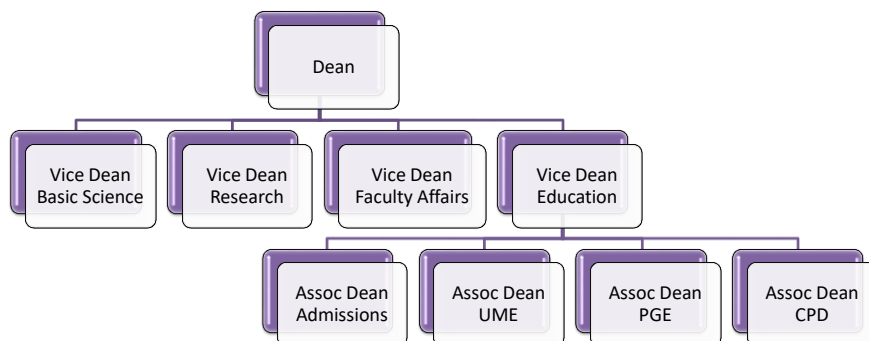
Medical Education



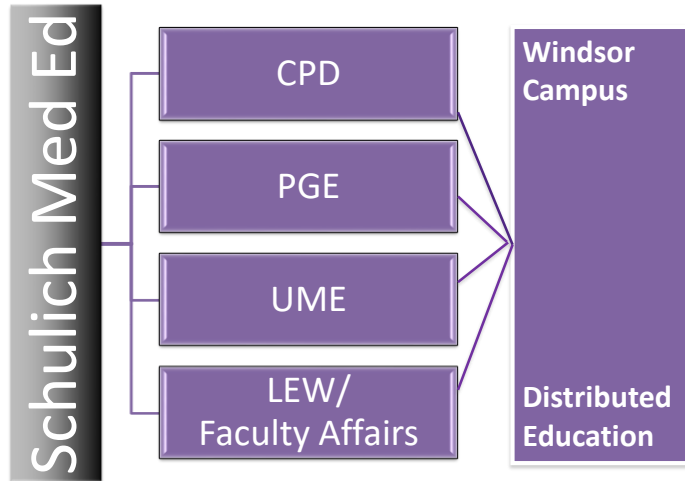
August 2017



Pillars of Medical Education

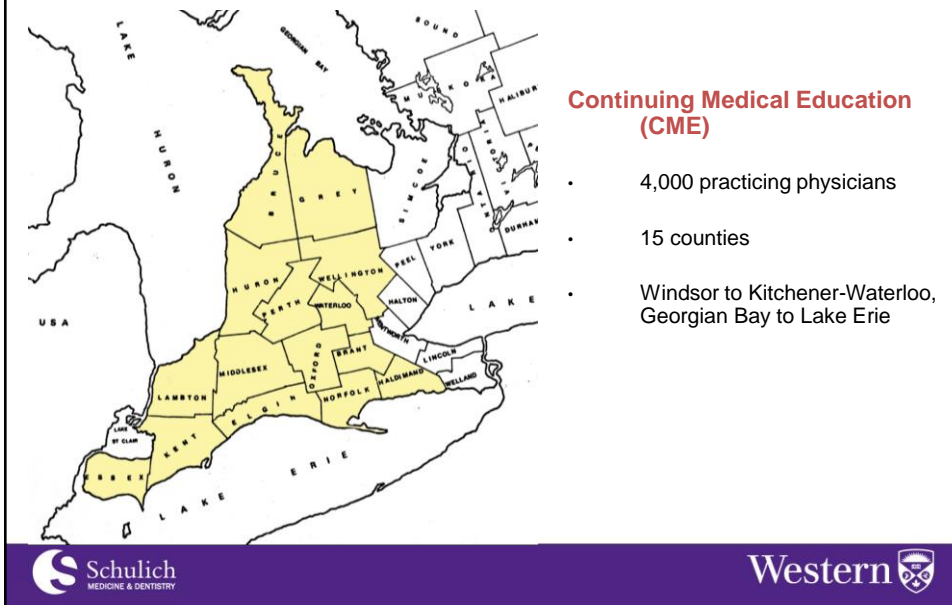


Pillars of Medical Education



Continuing Professional Development

Regional Catchment



CME Activities

- National CME programs
Neutropenia, hematology, Crohn's disease, cardiovascular risk
- Understanding Boundaries, a CPSO-recognized course
- IDEAS Foundations of Quality Improvement Program
- Self-assessment programs and personal learning projects

Accreditation Services

- CPD is an Accredited Provider of continuing education credits for:
 - RCPSC Maincert Section 1 - Group Learning Activities
 - RCPSC Maincert Section 3 - Self-Assessment Activities
 - RCPSC Maincert Section 3 - Simulation Activities
 - CFPC Mainpro+ credits - CME Events, Grand Rounds, Journal Clubs



CPD Contacts

Richard Cherry, Associate Dean

- Richard.Cherry@schulich.uwo.ca

Jason Eadie, Manager

- Jason.Eadie@schulich.uwo.ca



Post Graduate Medical Education



Getting involved in PGME

Within your department

- Clinical teaching
- Academic half day teaching
- Resident assessment
- Mentoring
- RPC involvement
- Competence committees

Faculty-wide

- Education-related committee work
- RCPSC or CFPC initiatives
- Education research



PGME Activities

- Shared curriculum
- CBME implementation support
- Policy
- Accreditation
- Registration/Licensing
- Liaison with resident organizations
- Liaison with training sites – London, Windsor, DME
- Allocation/Reallocation of training positions
- Support/Counseling
- Transfers
- Evaluation
- Appeals
- Awards
- Research

PGME Hot Issues

- Competency-based education (CBME)
- New accreditation process and standards
- Reduction in resident numbers
- Matching training numbers to health human resource needs

PGME Contacts

Chris Watling, Associate Dean

- Chris.Watling@schulich.uwo.ca

Scott Rumas, Manager

- Scott.Rumas@schulich.uwo.ca



Undergraduate Medical Education



Undergraduate Medical Education

[FUTURE STUDENTS](#)
[CURRENT STUDENTS](#)
[ACADEMIC RESOURCES](#)
[RESEARCH](#)
[PEOPLE](#)
[ABOUT US](#)

[Home](#) > [Academic Resources](#) > [Policies & Statements](#)

Academic Resources

- Attendance & Absenteeism
- Awards
- Policies & Statements**
 - Clerkship
 - College of Physicians & Surgeons of Ontario (CPSO)
 - Curriculum Development & Oversight
 - Electives
 - Faculty
 - Governance - Terms of Reference
 - Student Assessment & Progression
 - Student Professionalism
 - Student Wellness in UME
 - Western University Senate Policies
- Schedules, Sessional Dates & Course Materials

Policies & Statements

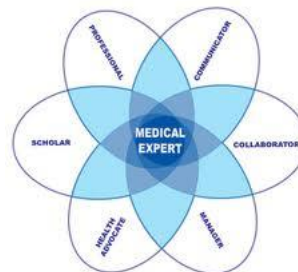
Listed below are the current policies and statements for students in the Undergraduate Medical Education Program at the Schulich School of Medicine & Dentistry.

- Clerkship
- College of Physicians & Surgeons of Ontario (CPSO)
- Curriculum Development & Oversight
- Electives
- Faculty
- Governance - Terms of Reference
- Student Assessment & Progression
- Student Professionalism
- Student Wellness in UME
- Western University Senate Policies

Curriculum Objectives

Adapted from CanMEDS Competencies:

- Medical Expert
- Professional
- Communicator
- Scholar
- Resource Manager
- Health Advocate
- Leader



Curriculum renewal underway embracing CBME



Undergraduate Medical Education

[FUTURE STUDENTS](#)
[CURRENT STUDENTS](#)
[ACADEMIC RESOURCES](#)
[RESEARCH](#)
[PEOPLE](#)
[ABOUT US](#)

[Home](#) > [About Us](#) > [Curriculum](#) > [Curriculum Competencies](#)

About Us

- [Overview](#)
- [Mission & Vision](#)
- [Teaching Hospitals](#)
- [Curriculum](#)
 - [Curriculum Overview](#)
 - [Governance Committees](#)
 - [Curriculum Competencies](#)
- [Accreditation](#)
- [News](#)
- [Contact Us](#)

Curriculum Competencies

1.0 Medical Expert | 2.0 Communicator | 3.0 Collaborator | 4.0 Manager | 5.0 Health Advocate | 6.0 Scholar | 7.0 Professional

1.0 Medical Expert

Establish knowledge, skills and attitudes appropriate to medicine.

- 1.1. Demonstrate knowledge, appropriate to an undifferentiated physician, of normal human structure, function and development from a biomedical, clinical and socio-behavioural perspective.
- 1.2. Demonstrate knowledge, appropriate to an undifferentiated physician, of abnormal human structure, function and development from a biomedical, clinical and socio-behavioural perspective.
- 1.3. Develop knowledge of medical vocabulary, facts, concepts, principles, laws, methods, and procedures.
- 1.4. Describe the principles of quality care and patient safety in clinical practice through integration of available best evidence and best practices.




Learning Modalities

Students will be exposed to an curriculum with:

- Large Lecture Learning (VC)
- Small Group Learning
 - Expert Small Groups
 - PCCIA
- Team Learning
- Independent Learning
- Mentored portfolio work
- Labs
- One to One Instruction



Year 3 Clerkship

Integrated Traditional Clerkship Distributed in our London, Windsor, and Distributed Sites:

- | | |
|---------------------------|--------|
| • Medicine | 12 wks |
| • Surgery | 12 wks |
| • Psychiatry | 6 wks |
| • Pediatrics | 6 wks |
| • Obstetrics & Gynecology | 6 wks |
| • Family Medicine | 6 wks |
| • Portfolio | |



Core & Electives minimum of 4 weeks R/R



Other Learning Modalities

Research

- Summer Studentships
- Curriculum

Observerships

- Longitudinal or Experiential
- Complement not replace

Electives

- Summer or Year 4

Student Clubs



Roles for you...

Instruction

- Small/Large Group Sessions

Facilitation

- PCCIA
- Portfolio

Course Design and Evaluation

- Curriculum Renewal; Quality Committee

Assessment

- Curriculum Renewal; Case Writing; OSCE's

Committees

Research



UME Contacts

Gary Tithecott, Associate Dean

- Gary.Tithecott@schulich.uwo.ca

Matt Longstaffe, Acting Manager

- Matthew.Longstaffe@schulich.uwo.ca

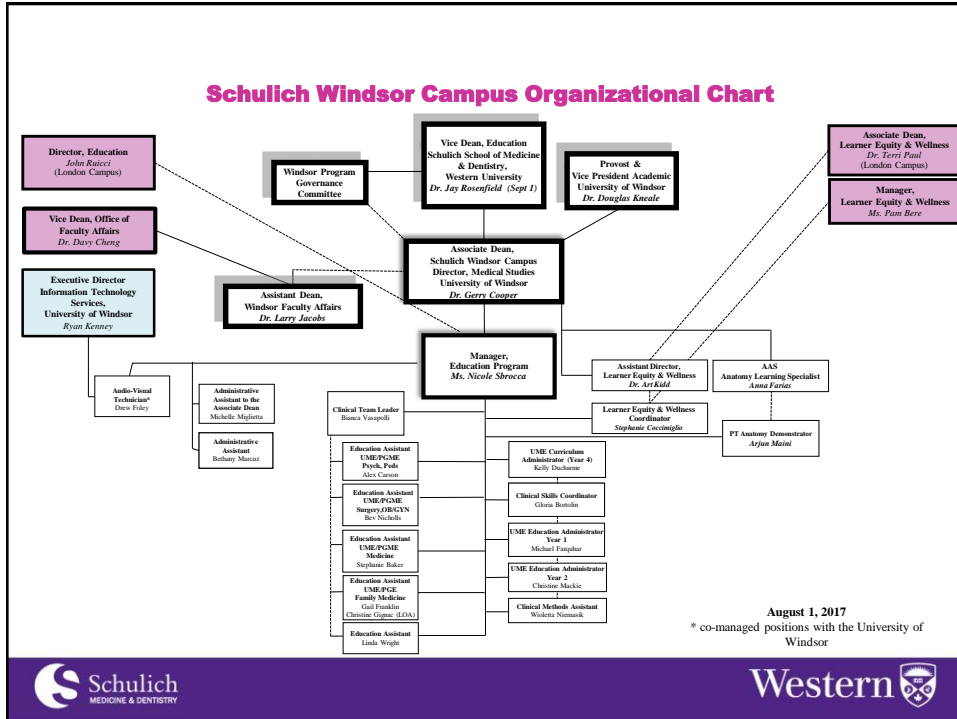


Schulich Medicine Windsor Campus



Dr. Murray O'Neil Medical Education Centre University of Windsor





Schulich Windsor Campus

- UME learners (2017-18):
 - 150 undergraduate MD students from Year 1 through Year 4
- Increased number of PGE learners (2017-18):
 - 10 PGY 1 + 10 PGY 2 Family Medicine Residents
 - 2 PGY 3 Family Medicine (Palliative Care)
 - 1 PGY 3 Family Medicine (Hospitalist)
 - 2 PGY 1 + 2 PGY 2 + 1 PGY 5 Psychiatry Residents
 - Roughly 150 individual residents have rotations in Windsor annually (medicine, FM, paed, OBS/GYN...)
- Increased number of Faculty:
 - 350+ Faculty Members (mostly Adjunct and clinical physicians)

Schulich Windsor Campus Academic Leadership Group

- 2 Program Coordinators (Clerkship, CTU)
- Academic Directors: 6 UME + 6 PGE + 3 UME/PGE
- 28 Course/Module Coordinators and/or Course Co-Chairs (Years 1, 2 & 4)



Schulich Windsor Campus Contacts

Gerry Cooper, Associate Dean

- Gerry.Cooper@schulich.uwo.ca

Nicole Sbrocca, Manager

- Nicole.Sbrocca@schulich.uwo.ca



Schulich Medicine Distributed Education



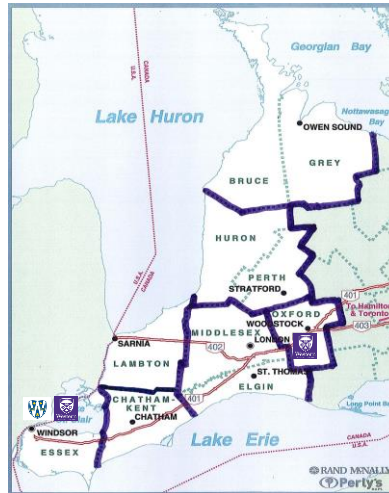
Core Deliverables

- Partner with community stakeholders in the development and delivery of Schulich Distributed Education programs
- Engage and support community-based physicians in teaching and research
- Introduce learners to rural regional medicine and different models of care



Distributed Education Academies

- Grey-Bruce
- Huron-Perth
- Oxford
- Elgin-Middlesex
- Kent-Lambton
- Essex



Regional Academic Directors (RADs)

• Grey-Bruce	Dr. Todd Webster	Owen Sound
• Huron-Perth	Dr. Shanil Narayan	Stratford
• Oxford	Dr. Elizabeth Urbantke	Woodstock
• Elgin-Middlesex	Dr. Robert Black	St. Thomas
• Kent-Lambton	Dr. Michael Haddad	Sarnia
	Dr. Susan Munro	Chatham

Distributed Education Contacts

George Kim, Assistant Dean

- George.Kim@schulich.uwo.ca

Fred Ross, Manager

- Fred.Ross@schulich.uwo.ca

